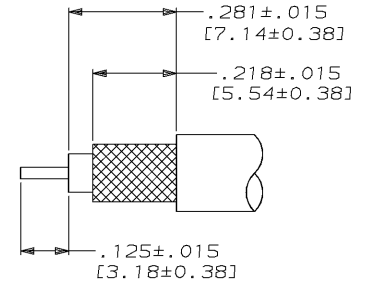
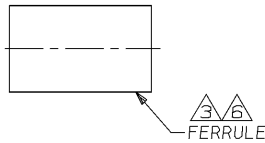
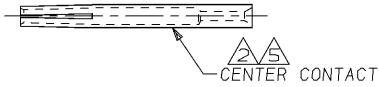
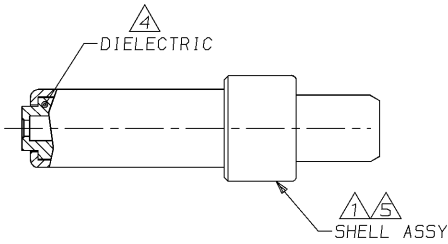


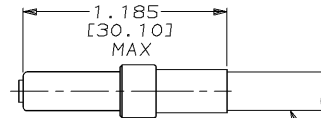
DRAWING MADE IN THIRD ANGLE PROJECTION

THIS DRAWING IS UNPUBLISHED. RELEASED FOR PUBLICATION, 19 .
 © COPYRIGHT 19 BY AMP INCORPORATED. ALL INTERNATIONAL RIGHTS RESERVED.

PROD CODE	LOC	DIST	P	F	ZONE	LTR	REVISIONS	DATE	APPD	
3321	DF	X0				A	REV PER 0600-4013-95	CT	8-95	JD



RECOMMENDED STRIP LENGTH



ASSEMBLED VIEW
SCALE 2:1

225935-6
PART NO.

- 1 BRASS PER ASTM-B-16.
- 2 BERYLLIUM COPPER PER ASTM-B-196.
- 3 COPPER PER ASTM-B-152.
- 4 PFTE PER ASTM-D-1710.
- 5 GOLD PLATE PER MIL-G-45204 OVER NICKEL PER QQ-N-290.
- 6 BRIGHT TIN-LEAD PLATE.
- 7. SEE I.S. 2348-3.
- 8. FOR USE WITH RG-316 DOUBLE BRAID CABLE.

THIS DRAWING IS A CONTROLLED DOCUMENT FOR AMP INCORPORATED. IT IS SUBJECT TO CHANGE AND THE CONTROLLING ENGINEERING ORGANIZATION SHOULD BE CONTACTED FOR THE LATEST REVISION.

DO NOT SCALE PRINT. UNLESS SPECIFIED DIMENSIONS IN INCHES [mm]	DR 11-8-93 C.C. THOMAS
TOLERANCES ON: 1. ALL DIMS ± .005 (0.13) 2. PLC DEC ± .005 (0.13) 3. ANGLES ± -	CHK 11-8-93 J. CABARLO
MATERIAL SEE CALLOUTS	APPD 11-8-93 J. CABARLO
FINISH SEE CALLOUTS	PRODUCT SPEC C.C. THOMAS
	APPLICATION SPEC
	WEIGHT -

AMP AMP Incorporated Harrisburg, PA 17105-3608		
NAME CONNECTOR, COAXIAL, RF, PIN, SIZE 9		
SIZE B	CAGE CODE 00779	DRAWING NO C=225935-6
SCALE 4:1	SHEET 1 OF 1	

AMP 1470-15 REV 3-92
08-AUG-95 10:46:51 amp16412 /home/amp16412/edmod

CUSTOMER DRAWING