

4

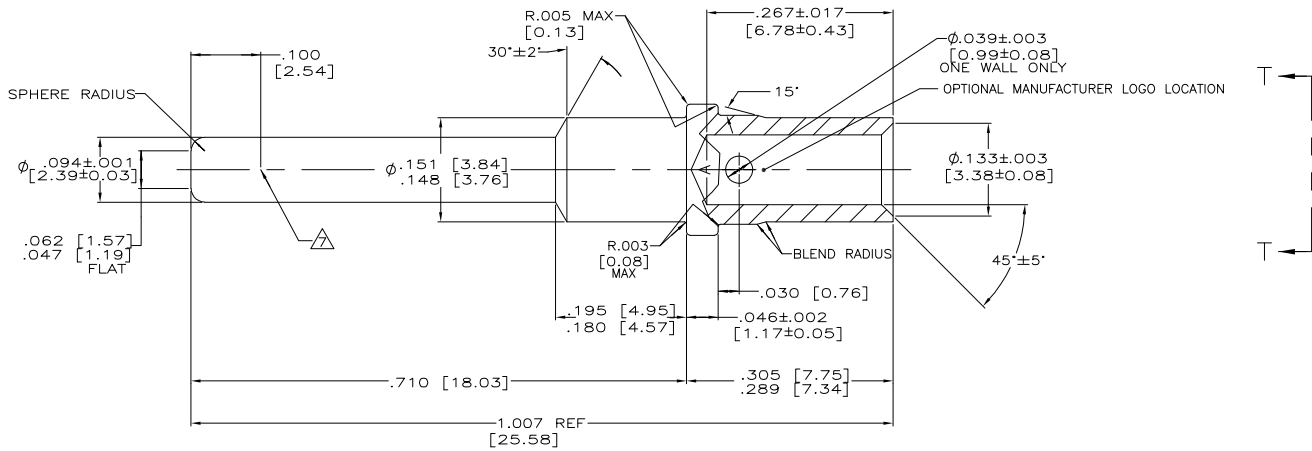
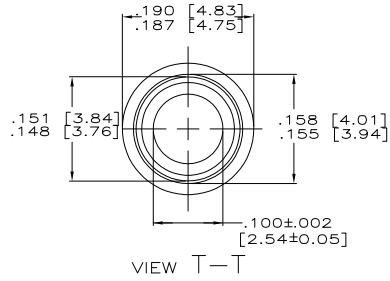
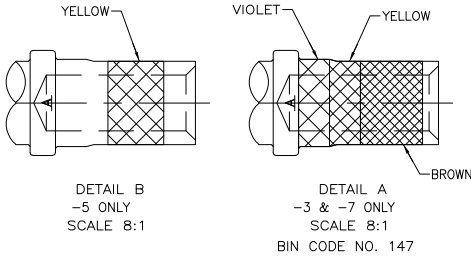
3

2

1

THIS DRAWING IS UNPUBLISHED. RELEASED FOR PUBLICATION
 © COPYRIGHT BY TYCO ELECTRONICS CORPORATION. ALL RIGHTS RESERVED.

LOC		DIST		REVISONS		DATE	OWN	APPD
DF	AO	F	LR	DESCRIPTION				
		P		REV PER EC 0414-0154-04		24JAN06	TK	CT



- ▲ GOLD PLATED PER MIL-C-45204 OVER NICKEL PER QQ-N-290.
- ▲ SILVER PLATED PER QQ-S-365.
- ▲ COLOR CODED AS SHOWN IN DETAIL A.
- ▲ SINGLE COLOR CODE AS SHOWN IN DETAIL B.
- ▲ GRAPHITE COATED, NO COLOR CODE.
- ▲ MAT'L: LEADED COPPER PER ASTM-B-152.
- ▲ POINT OF PLATING THICKNESS MEASUREMENT.

OBSOLETE	▲	▲	205763-7
OBSOLETE	▲	▲	205763-5
OBSOLETE	▲	▲	205763-4
OBSOLETE	▲	▲	205763-3
REMARKS	FINISH	PART NUMBER	

THIS DRAWING IS A CONTROLLED DOCUMENT. DWG 12-15-95 C.C. THOMAS 4-11-98
 C.K. SHARPE 4-11-98
 A. SHARPE 4-11-98

TYCO Electronics Tyco Electronics Corporation Harrisburg, PA 17105-3608

PIN CONTACT SIZE 12,ARINC TYPE XVII-RM

APPLIC. SPEC: PRODUCT SPEC: SIZE: ONE CODE: DRAWING NO: RESTRICTED TO: A2 00779 ©=205763

WEIGHT: FINISH: SEE TABLE CUSTOMER DRAWING SCALE: 10:1 SHEET 1 of 1 REV P

MP 1471-9 REV 31MM2000

24JAN2006 12:58pm US071105 H:\dmmod\205763_1_c.dwg