

4

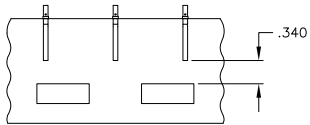
3

2

1

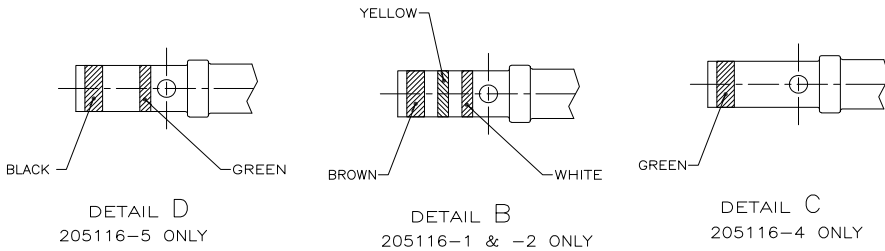
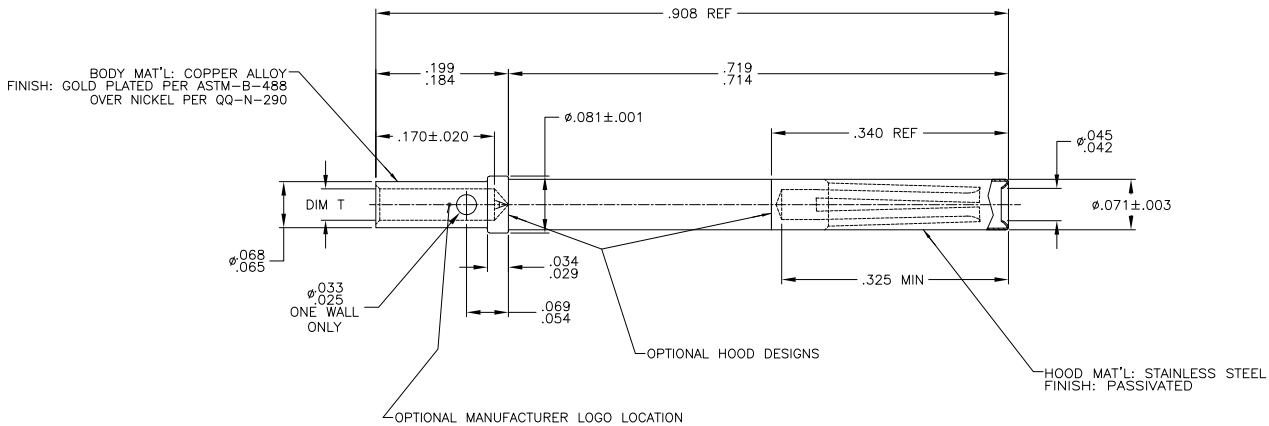
THIS DRAWING IS UNPUBLISHED. RELEASED FOR PUBLICATION
 © COPYRIGHT BY TYCO ELECTRONICS CORPORATION. ALL RIGHTS RESERVED.

LOC	DIST	REVISIONS			
P	LTR	DESCRIPTION	DATE	BY	APPD
R		REV PER OH14-0894-04	1-11-05	CT	LO



DETAIL A
 TAPE MOUNTED
 ASSEMBLY
 SCALE 1:1
 205116-2 ONLY

- WHEN ORDERING CONTACT ON TAPE, ORDER BY THE TAPE NUMBER PLUS THE PACKAGING CODE AS FOLLOWS:
 - FOR USE WITH AMP TAPETRONIC, PNEUMATIC TOOL-
 - 1000 PARTS TO A BOX ADD PACKAGING CODE: 1MBOX
 - FOR USE WITH 4/8 INDENT STRIPPER CRIMPER-
 - 1000 PARTS TO A REEL ADD PACKAGING CODE: 1MREEL
 - 5000 PARTS TO A REEL ADD PACKAGING CODE: 5MREEL
- POINT OF PLATING THICKNESS MEASUREMENT .100/.150 FROM WIRE BARREL END ON EXTERIOR.



30 - 26	SEE DETAIL D	Ø.023-.025	205116-5
24 - 20	SEE DETAIL C	Ø.043-.046	205116-4
24 - 20	NO COLOR CODE	Ø.043-.046	205116-3
24 - 20	SEE DETAIL A & B	Ø.043-.046	205116-2
24 - 20	SEE DETAIL B	Ø.043-.046	205116-1
WIRE GAGE	REMARKS	DIM T	PART NUMBER
THIS DRAWING IS A CONTROLLED DOCUMENT. DWG: C. THOMAS 2-12-04 OK: LARRY OH 2-12-04 NAME: LARRY OH 2-12-04 PRODUCT SPEC: - APPLICATION SPEC: - WEIGHT: - CUSTOMER DRAWING			
DIMENSIONS: INCHES		Tyco Electronics Corporation Harrisburg, Pa 17105-3608	
MATERIAL: SEE CALLOUTS		SOCKET ASSEMBLY, SUB 20, TYPE XVII-RM	
FINISH: SEE CALLOUTS		SIZE: A2 00779 ©=205116	
		RESTRICTED TO: -	
		SCALE: 10:1 SHEET: 1 OF 1 REV: R	