

4

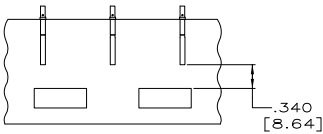
3

2

1

THIS DRAWING IS UNPUBLISHED. RELEASED FOR PUBLICATION
 © COPYRIGHT BY TYCO ELECTRONICS CORPORATION. ALL RIGHTS RESERVED.

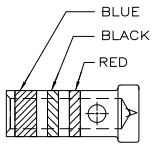
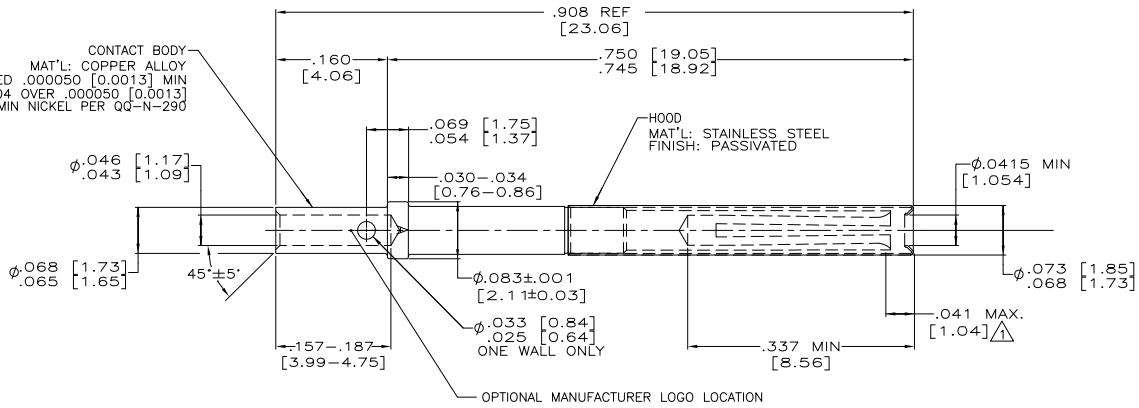
LOC	DIST	REVISIONS					
DF	AO	P	LTR	DESCRIPTION	DATE	MIN	APPD
		F		REV PER EC 0414-0154-04	23JAN06	TK	CT



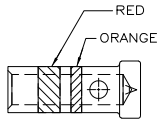
DETAIL A
 SCALE 1:1
 TAPE MOUNTED
 (-3 ONLY)

▲ ELECTRICAL ENGAGEMENT POINT.

CONTACT BODY
 MAT'L: COPPER ALLOY
 FINISH: GOLD PLATED .000050 [0.0013] MIN
 PER MIL-G-45204 OVER .000050 [0.0013]
 MIN NICKEL PER QQ-N-290



DETAIL C
 -4 ONLY



DETAIL B
 -2 & -3 ONLY

SEE DETAIL C	208267-4
SEE DETAIL A & B	208267-3
SEE DETAIL B	208267-2
DESCRIPTION	PART NO.

THIS DRAWING IS A CONTROLLED DOCUMENT.		DR: C. THOMAS 12/21/00	Tyco Electronics Corporation Harrisburg, PA 17105-3608	
DIMENSIONS: INCHES		OK: S. GLATFELTER 1-10-01	Tyco Electronics	
MATERIAL: SEE CALLOUTS		APPD: S. GLATFELTER 1-10-01	SOCKET CONTACT ASSY, SIZE 20,ARINC 600	
FINISH: SEE CALLOUTS		APPLICATION SPEC: -	SIZE: A2	CHG CODE: C-208267
		HEIGHT: -	DRAWING NO: 00779	RESTRICTED TO: -
		CUSTOMER DRAWING	SCALE: 10:1	SHEET: 1 of 1
			REV: F	

AMP 1471-9 REV 31MM2000

24JAN06 1:57pm USD07105 H:\dmmmod\208267_1--c.dwg