

4

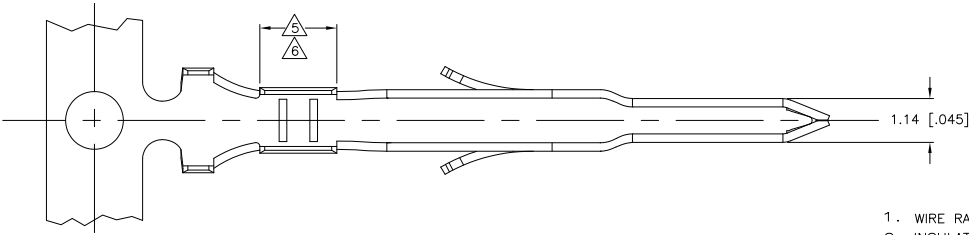
3

2

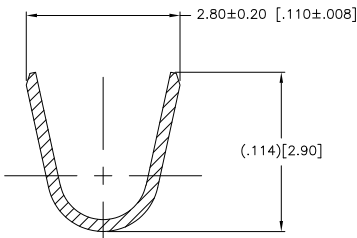
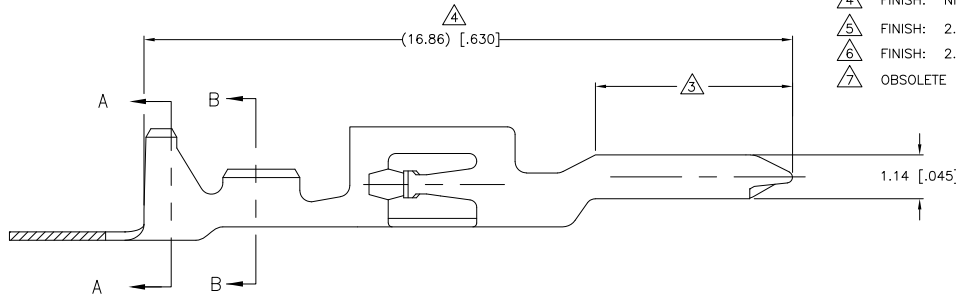
1

THIS DRAWING IS UNPUBLISHED. RELEASED FOR PUBLICATION.  
 © COPYRIGHT BY TYCO ELECTRONICS CORPORATION. ALL RIGHTS RESERVED.

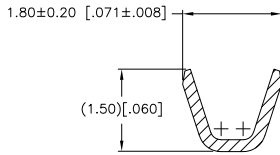
LOC	DIST	REVISIONS			
F	LR	DESCRIPTION	DATE	BY	APPD
E		REVISED PER 063B-1115-04	24JUN05	KW	DC
E1		REVISED PER ECO-09-023313	09OCT09	KK	AEG



1. WIRE RANGE: 0.12-0.35mm<sup>2</sup> (26-22 AWG).
  2. INSULATION RANGE: 1.20-1.75 DIA.
- △ FINISH: 0.76μm MINIMUM GOLD OVER 1.27μm MINIMUM NICKEL REQUIRED
  - △ FINISH: NICKEL BASE PLATE ON ALL SURFACES IN THIS AREA.
  - △ FINISH: 2.54μm MINIMUM TIN-LEAD ON ALL SURFACES IN THIS AREA.
  - △ FINISH: 2.54μm MINIMUM TIN ON ALL SURFACES IN THIS AREA.
  - △ OBSOLETE PARTS: OBSOLETE CIS STREAMLINING PER D.RENAUD/D.SINISI



SECTION A-A  
SCALE 20:1



SECTION B-B  
SCALE 20:1



△ SUPERCEDED	△ 4 △ 5	0.22 [.009] PHOS BRONZE	794578-4
	△ 3 △ 4	0.22 [.009] PHOS BRONZE	<del>794578-2</del>
		PRE-TIN	794578-1
		FINISH	MATERIAL PART NUMBER

THIS DRAWING IS A CONTROLLED DOCUMENT.		DRN S. HAMM 18-FEB-2002	Tyco Electronics Corporation	
DIMENSIONS: mm [INCHES]		CHK D. COLEY 18-FEB-2002	Harrisburg, Pa 17105-3608	
TOLERANCES UNLESS OTHERWISE SPECIFIED:		APRO D. COLEY 18-FEB-2002	NAME	
0 PL ±		PRODUCT SPEC	108-1646	
1 PL ±		APPLICATION SPEC	114-6067	
2 PL ±	0.10 [.004]	WEIGHT	A2 00779 C=794578	
3 PL ±		FINISH	SEE TABLE	
4 PL ±			CUSTOMER DRAWING	
MATERIAL 0.22 [.009]PH BRZ			SIZE CASE CODE DRAWING NO	RESTRICTED TO
			A2 00779 C=794578	-
			SCALE 14:1	SHEET 1 OF 1 REV E1

AMP 1471-9 REV 31MM2000

794578

B

A