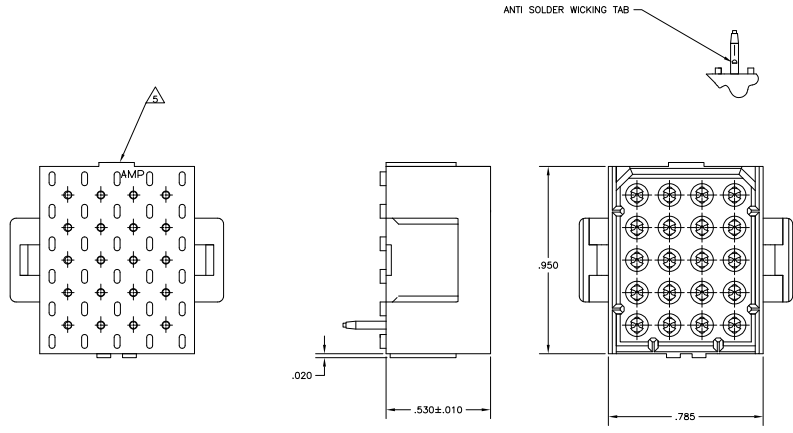
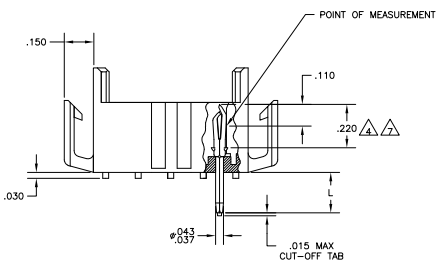
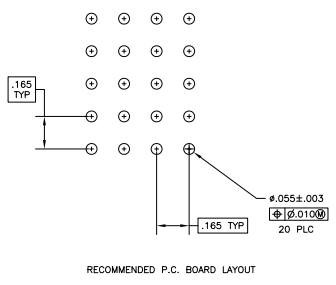


THIS DRAWING IS UNCLASSIFIED  
 RELEASED FOR PUBLICATION  
 © 2015 BY TTI ELECTRONICS CORPORATION. ALL RIGHTS RESERVED.

REV	DATE	DESCRIPTION	BY	CHK	APP
CM	0				
R	02/28/2014				



- FITS SOCKET HOUSING 640524.
- ASSEMBLY CONFORMS TO AMP SOLDERABILITY SPEC. 109-11-3.  
 FOR USE WITH .063 THICK P.C. BOARD.  
 CONTACT IS PLATED OVERALL WITH .000050 NICKEL, THEN .000030 GLD OVER CONTACT LENGTH INDICATED AND .000150 MATTE TIN-LEAD ON SOLDER TAIL END.  
 UL AND CSA LOGO LOCATED ON THIS SURFACE.  
 FOR USE WITH .120 THICK P.C. BOARD.  
 CONTACT IS PLATED OVERALL WITH .000050 NICKEL, THEN .000030 GLD OVER CONTACT LENGTH INDICATED AND .000150 MATTE TIN ON SOLDER TAIL END.



IN	MM	IN	MM	IN	MM	IN	MM
.010	0.25	.055	1.40	.220	5.59	-	-
.008	0.20	.043	1.09	.210	5.33	-	-
.005	0.13	.037	0.94	.165	4.19	-	-
.003	0.08	.030	0.76	.150	3.81	.950	24.13
.0000500	.00127	.020	0.51	.110	2.79	.785	19.94
.0000300	.00076	.015	0.38	.063	1.60	.530	13.46
IN	MM	IN	MM	IN	MM	IN	MM

CONVERSION TABLE

HOUSING COLOR	PIN FINISH	PART NUMBER	
.210	BRICK RED	GOLD	2-640504-4
.150	BRICK RED	GOLD	2-640504-2
.210	BRICK RED	GOLD	640504-4
.210	BRICK RED	PRE-TIN	640504-3
.150	BRICK RED	GOLD	640504-2
.150	BRICK RED	PRE-TIN	640504-1
*L*	*.010 - .020		

THIS DRAWING IS A CONTROLLED DOCUMENT.

INSTRUMENTS: METRIC

DATE: 02/28/2014

DESIGNER: [Name]

ENGINEER: [Name]

CHECKER: [Name]

APPROVER: [Name]

REVISIONS: [Table]

CUSTOMER DRAWING: [Number]

DATE: 02/28/2014

BY: [Name]

CHK: [Name]

APP: [Name]

