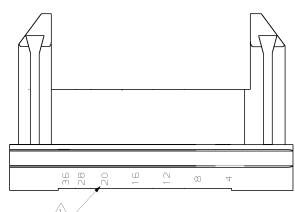
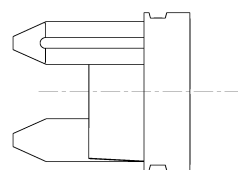
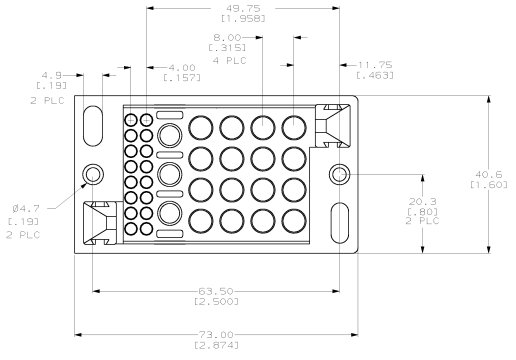
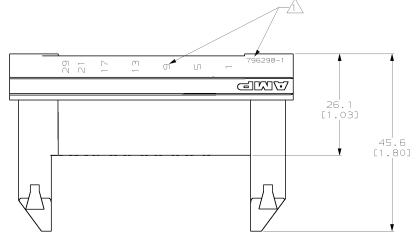


REV. NO.		REV. DATE		REV. BY		REV. FOR	
CH	11						
		DESCRIPTION		REV	DATE	BY	APP
		0		ALSO PER RFR 2	24FEB00	LJM	ES

* ANPOWER is a trademark

1. MATERIAL: POLYESTER PCT, BLACK.
2. POSITIONS 1-19 ARE FOR 3mm CONTACTS.
3. POSITIONS 20-35 ARE FOR SIZE 16 CONTACTS.
4. ALL DIMENSIONS, EXCEPT PANEL CUTOUTS, ARE REFERENCE ONLY.

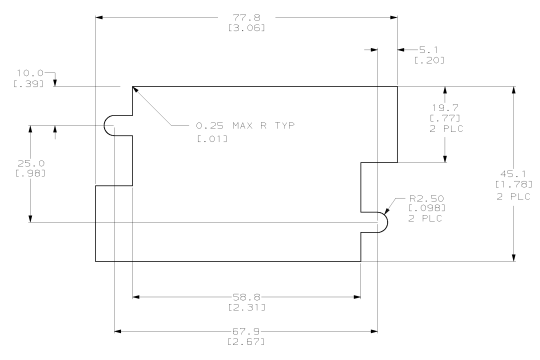


796298-1
PART NO.

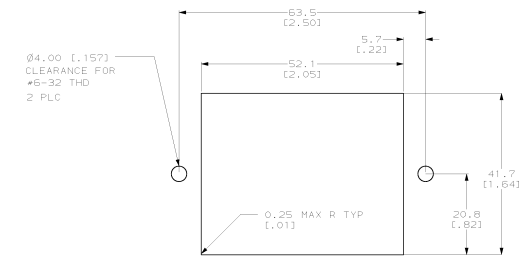
THIS DRAWING IS A CONTROLLED DOCUMENT.		DATE: 24FEB00	AMP Incorporated
DRAWING NO.: 796298-1		REV: 11	Harrisburg, PA 17105-3608
MATERIAL: POLYESTER PCT, BLACK		AMP POWER MULTI PIN PLUS HOUSING, PLUG POSITION	
PART NO.: 796298-1		REV: 11	
CUSTOMER DRAWING		REV: 11	

NO.	DATE	BY	CHKD.	DESCRIPTION	REV.	DATE	BY
1				SEE SHEET 1	-	-	-

* AMPPOWER is a trademark



RECOMMENDED FLOAT MOUNT PANEL CUTOUT
 EXTERNAL VIEW



RECOMMENDED STATIONARY MOUNT PANEL CUTOUT
 EXTERNAL VIEW

THIS DRAWING IS A CONTROLLED DOCUMENT.		DATE: 04/20/2001	AMP Incorporated
SYMBOLS:	FINISHES/SURF.:	BY: [unclear]	Hartleburg, PA 17105-3608
UNIT(S):	PROJ. NO.:	BY: [unclear]	
SCALE:	REV.:	DATE:	
MATERIAL:	QUANTITY:	PRICE:	