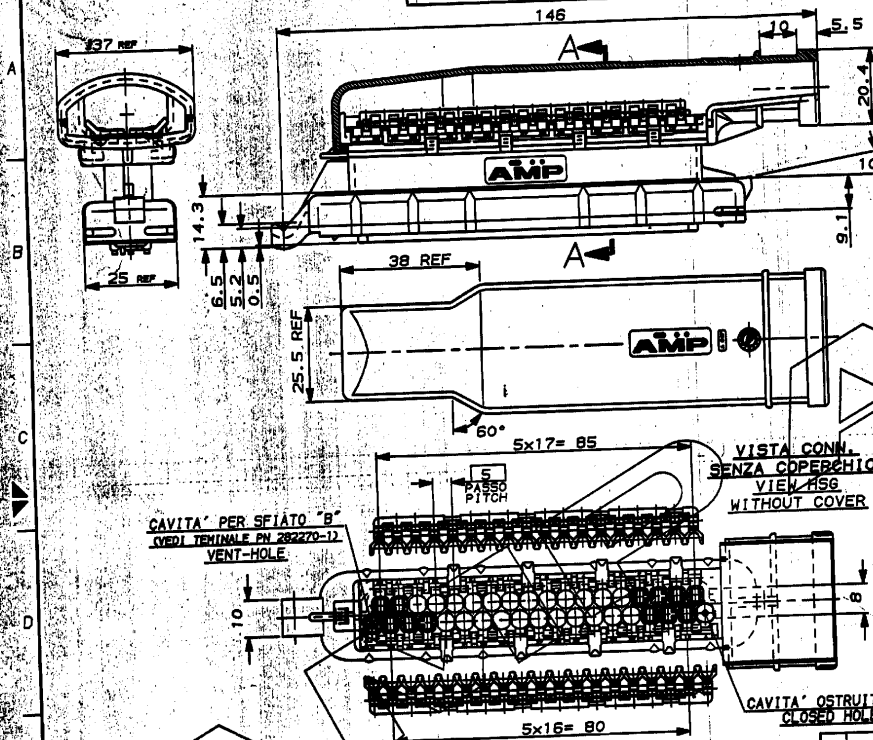


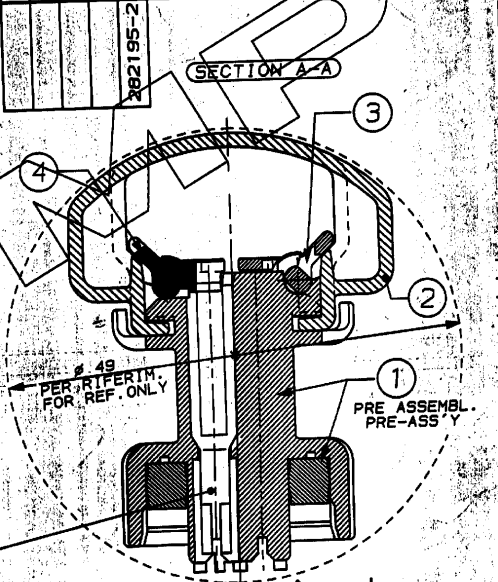
STANDARD VERSION

SCALA NON IMPERATIVA (DO NOT SCALE)
DIMENSIONI IN mm METRIC PROIEZIONE EUROPEA (EUROPEAN PROJECTION)

Q.TY REQ'D PER ASS'Y	PART. NO.	DESCRIPTION	QTY
	282267-1	SEC. LOCK 19 POS.	4
	282266-1	SEC. LOCK 18 POS.	3
	282268-1	COVER	2
	282264-2	HOUSING ASS'Y	1



N°35 CAVITA' ADATTE PER TERMINALE "AMP JUNIOR POWER TIMER" E RELATIVI GOMMINI.
N°35 CAVITTES SUITABLES POUR "AMP JUNIOR POWER TIMER" CIG.



CAVITA' PER SFIATO "B"
(VEDI TERMINALE PN 282270-1)
VENT-HOLE

VISTA CONN. SENZA COPERCHIO. VUEU HSG WITHOUT COVER

CAVITA' OSTRUITA "A"
CLOSED HOLE

NOTES:

- 1) MATERIALI: HSG, COVER AND SEC. LOCK IN PA 66 GLASS FILLED - SEALING OF SILICONE RUBBER
- 2) ITEMS 1, 2, 3, 4 PACKAGE INTO A CARTON BOX.

NOTE:

- 1) MATERIALI: -BLOCCHETTO, COPERCHIO E SEC. LOCK IN PA 66 CAR. VETRO - GUARNIZIONE IN SILICONE (COL. ROSSO)
- 2) I PART. 1, 2, 3, 4 SONO CONFEZIONATI IN KIT IN UN'UNICA SCATOLA DI CARTONE.

BLACK COLOUR (MATERIAL) 282195-2 NUMBER (PART NUMBER)

CUSTOMER DWG. FOR REFERENCE ONLY DISEGNO PER CLIENTE SOLO PER RIFERIMENTO

THIS DRAWING IS UNPUBLISHED
BY AMP (REGISTERED TRADEMARK) ALL INTERNATIONAL RIGHT RESERVED AND PRODUCTS MAY BE COVERED BY U.S. AND FOREIGN PATENT AND/OR PATENT PENDING APPLICATIONS.
TOLLERANZE: SE NON SPECIFICATE SPECIFICATO
DIM. ISOLANTE DIM. RAME
1.7-2.1 mm 0.5-1.0 mm
2.4-3.0 mm 0.5-2.5 mm

AMP ITALY S.p.A.
Corso P.lli Garibaldi, 18
COLLENO (TORINO)

DIR. E. CINI 11 MAY 1980
DESCRIPTION: 35 P. SPLASH PROOF CONN. WITH SECONDARY LOCK

REV.	REVISIONI	DATE	BY	CHKD.	APP. DATA	REV.	POS. LO
A	RELEASED FOR PRODUCTION BC ET00-0178-S					1	2

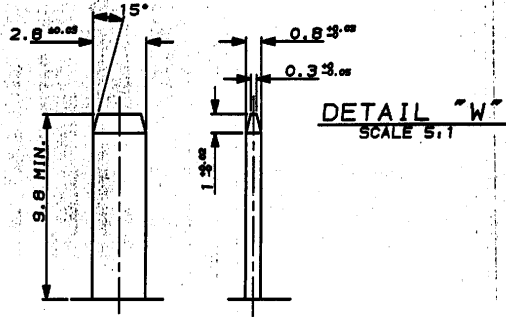
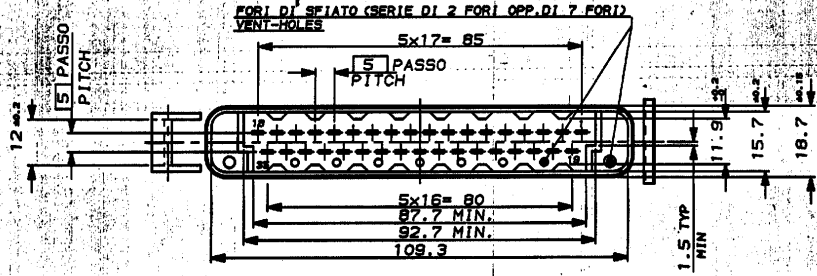
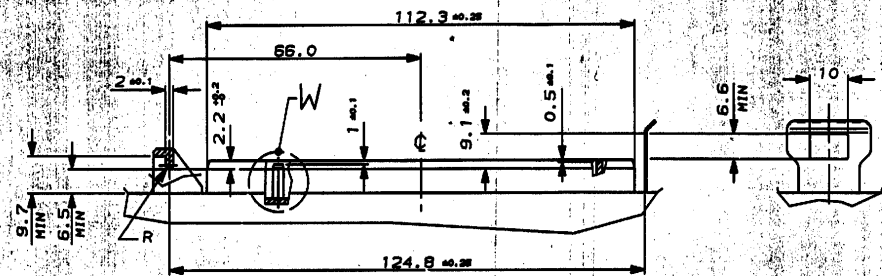
STANDARD VERSION

SCALA NON IMPERATIVA
DO NOT SCALE
DIMENSIONI IN
DIMENSIONS IN (MM)

METRIC

PROIEZIONE EUROPEA
EUROPEAN PROJECTION

INTERFACCIA D'ACCOPPIAMENTO
COUNTERPART



SEE SHEET 1 OF 2

(FINISH / COLOUR)	MATERIALE (MATERIAL)	NUMERO (PART NUMBER)
CUSTOMER DWG. FOR REFERENCE ONLY	DISSEGNO PER CLIENTE SOLO PER RIFERIMENTO	
THIS DRAWING IS UNPUBLISHED		
PROPRIETÀ COPYRIGHT © BY AMP INCORPORATED, MONTCLAIR, N.J. ALL INTERNATIONAL RIGHTS RESERVED. AMP, AMPLOGO AND LOGO ARE REGISTERED TRADEMARKS OF AMP INCORPORATED. TOLLERANZE: SE NON DIVERSAMENTE SPECIFICATO DIM. ISOLANTE (DIM. DIA. ANNI) FINO FILE (FINE ANNI) SCALA (SCALE)		
± 0.3	AMP	AMP ITALIA S.p.A. Corso P.lli Darv., 18 COLLENO (TORINO)
ANGOLI (ANGLES) ± 2°	DIS. E.CINI	35 P. SPLASH PROOF CONN. WITH SECONDARY LOCK
CONT. - 30 NOV. '82	G. TARTAR	LOC. SIZE (SCALE) (SCALE) REV. PUBBLICAZIONE (PUBLICATION)
REV. DATA (DATE)	DATA (DATE)	I A3 C-282195 A 282195