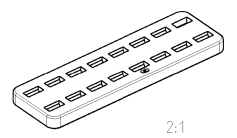
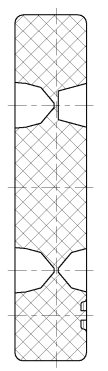
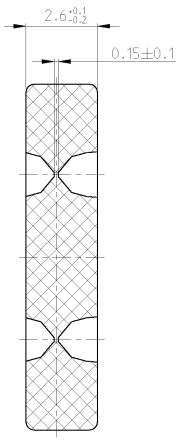


USE WITH 963215 / Verwendet für 963215

REV	LYR	REVISIONS	DATE	DNW	APFD
B1		Neues Format (nach DIN A4)	11.05.93	Garcia	-
B2		Zeichnung überarbeitet	16.06.94	Kress	-
C		SEE PCN E600-0094-03 (REV. CHANGE)	14.JAN2003	Pichtl	-
D		SEE PCN E6A0-1960-04	31.AUG2004	SKH	T.K.



NOTES
Bemerkungen

- △ CAVITY MARKING RAISED, OPTIONAL IN ONE OF THE WINDOWS
Nestmarkierung erhaben, wahlweise in einem Fenster
- △ GATE AREA SUNK, GATEMARK MUST NOT GET THROUGH OUTER GEOMETRY
Angußbereich vertief. Anguß darf nicht aus der äußeren Geometrie überstehen

963216-1	D	1.29	SILICON	SEAL	NATUR	1
PART NO	REV	WEIGHT [g]	MATERIAL	DESCRIPTION	COLOUR	ITEM
<small>TOP DIMENSIONS IN CENTRALS UNITS UNLESS OTHERWISE SPECIFIED. DIMENSIONS IN PARENTHESES ARE FOR REFERENCE ONLY.</small> <small>OBERE DIMENSIONEN IN ZENTRAL-EINHEITEN UNLESS ANDERSONS ANGEZEIGT. DIMENSIONEN IN KLEINEN KLEMMEN SIND NUR FÜR DEN VERGLEICH.</small>			DWG 31A162/2004 CS_Kann-Henning T. Killian 16SEP2004 DATE PRODUCT SPEC 108-18102 APPLICATION SPEC 114-18175 WEIGHT CUSTOMER DRAWING			
DIMENSIONS: min			tyco Electronics tyco Electronics AMP GmbH D - 64625 Bensheim SEAL FOR 16POS. JPT CONNECTOR SIZE CASE CODE DRAWING NO A 2 100779 963216 RESTRICTED TO			
MATERIAL FINISH			SCALE 5:1 SHEET 1 OF 1 REV 0			

AMP 1471-8 REV 31MAR2000
PFA ENGINEER DRAWING