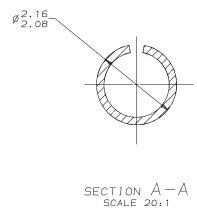
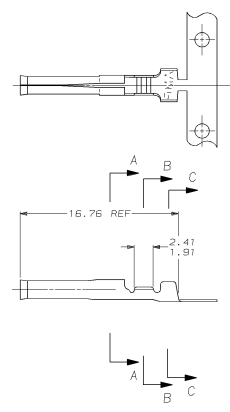
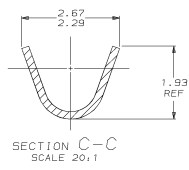
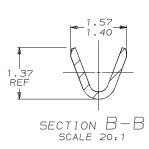


DRAWING MADE IN THIRD ANGLE PROJECTION
 THIS DRAWING IS UNPUBLISHED. RELEASED FOR PUBLICATION
 © COPYRIGHT 19 BY AMP INCORPORATED. ALL INTERNATIONAL RIGHTS RESERVED.

REVOLUTIONS		DATE	APPD
CM	53	8-1-84	KS
ZONE	LTR	DESCRIPTION	
0		RLSD PER PR CH 94-85	



MM	IN	MM	IN
2.06	.081	-	-
2.01	.079	-	-
1.93	.076	-	-
1.91	.075	-	-
1.57	.062	15.76	.660
1.52	.060	2.67	.105
1.40	.055	2.41	.095
1.37	.054	2.29	.090
0.20	.008	2.16	.085
0.13	.005	2.08	.082

CONVERSION TABLE

METRIC

FINISH	MATERIAL	INSULATION DIAMETER	WIRE RANGE	PART NO
PRE-TIN	0.20 BRASS	1.52 MAX	30-24 (0.05-0.2mm ²)	794046-1
DO NOT SCALE PRINT. UNLESS SPECIFIED DIMENSIONS IN MM (INCHES) TOLERANCES ON ± P L E DEC # ANGLES #		DR 8-1-84 P. SALON	AMP INCORPORATED	794046-1
MATERIAL		APPD 8-4-84 C. SLOD	NAME	.062 SOCKET
SEE TABLE		PRODUCT SPEC		COMMERCIAL PIN & SOCKET
FINISH	APPLICATION SPEC	SIZE	CAGE CODE	DRAWING NO
SEE TABLE		D	00773	794046
WEIGHT		SCALE	5:1	SHEET 1 OF 1

AMP 17943 PRO 6-80
 01-AUG-84 13:23:02 amp23993 / F:\125\amp23993\A.pr 94-85

CUSTOMER DRAWING