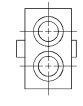
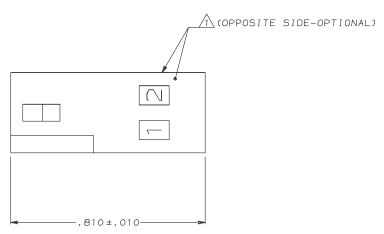
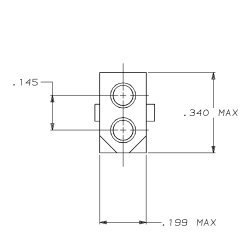
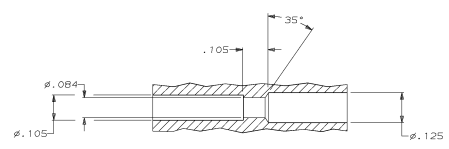
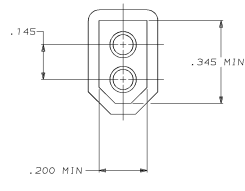


DRAWING MADE IN THIRD ANGLE PROJECTION
THIS DRAWING IS UNPUBLISHED. RELEASED FOR PUBLICATION
© copyright 1988 BY AMP INCORPORATED. ALL INTERNATIONAL RIGHTS RESERVED.

REVOLUTIONS				DATE	APPD
LOC	FRST	PL	ZONE	LTR	
CM	53	F	B	REV PER EC UL30-0067-96	10-4-96

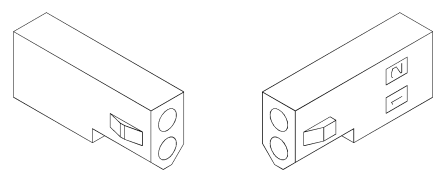


AMP LOGO AND CAVITY NO. LOCATED ON EITHER SURFACE.



TYPICAL RECEPTACLE CAVITY SECTION
(DIMENSIONS REFERENCE ONLY)

MATING CONNECTOR INTERFACE



3-DIMENSIONAL MODELS
NTS

IN	MM	IN	MM
.199	5.05	-	-
.145	3.68	.810	20.57
.062	1.57	.345	8.76
.070	0.25	.340	8.64
.005	0.13	.200	5.08

CONVERSION TABLE



DO NOT SCALE PRINT. UNLESS SPECIFIED, DIMENSIONS IN INCHES TOLERANCES ON: 1 P.L.C. DEC # .005 2 P.L.C. DEC # .005 3 P.L.C. DEC # .005 ANGLES # °		DR K. WHITAKER 4-26-88	770419-7 PART NO
CHK B. SWING 4-26-88	APPD B. CARSON 4-26-88	NAME RECEPTACLE, 2 CIRCUIT, .062 PIN AND SOCKET	AMP INCORPORATED Morton, Pa. 17055
MATERIAL NYLON, UL 94V-2	PRODUCT SPEC -	SIZE D 00779	DRAWING NO 770419
COLOR NATURAL	APPLICATION SPEC -	WEIGHT -	SCALE 5:1
		SHEET 1 OF 1	

CUSTOMER DRAWING