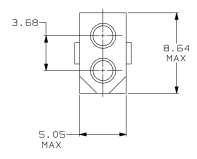
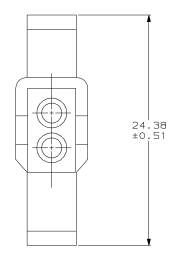
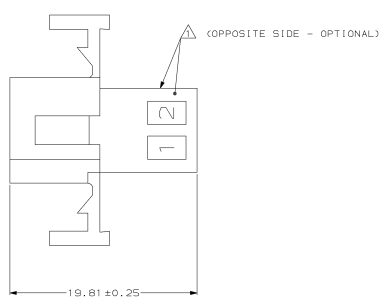
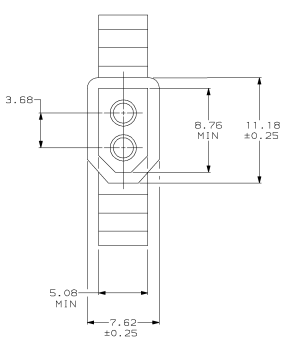


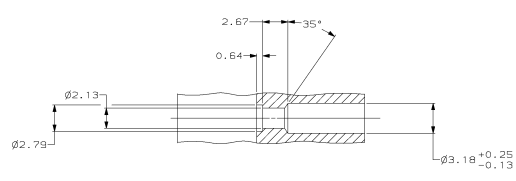
THIS DRAWING IS UNPUBLISHED.
 © COPYRIGHT 19
 RELEASED FOR PUBLICATION
 BY AMP INCORPORATED. ALL INTERNATIONAL RIGHTS RESERVED.

| REV | DATE | DESCRIPTION | APP'D |
|-----|---------|-----------------------|-------|
| E | 11-4-93 | REV & REDIN PER CM-11 | PS |

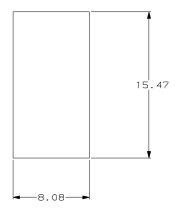
AMP LOGO AND CAVITY NUMBER LOCATED ON EITHER SURFACE.



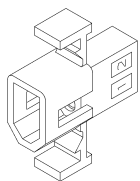
MATING CONNECTOR INTERFACE



TYPICAL PLUG CAVITY SECTION (DIMENSIONS REFERENCE ONLY)



RECOMMENDED CUT OUT FOR 1.52 MAX THICK PANEL



3-DIMENSIONAL MODEL NTS

| MM | IN | MM | IN | MM | IN |
|------|------|------|------|-------|------|
| 2.13 | .084 | 7.62 | .300 | 24.38 | .960 |
| 1.57 | .062 | 5.08 | .200 | 19.81 | .780 |
| 1.52 | .060 | 5.05 | .199 | 19.47 | .763 |
| 0.64 | .025 | 3.68 | .145 | 11.18 | .440 |
| 0.51 | .020 | 3.18 | .125 | 8.76 | .345 |
| 0.25 | .010 | 2.79 | .110 | 8.64 | .340 |
| 0.13 | .005 | 2.67 | .105 | 8.08 | .318 |

CONVERSION TABLE



THIS DRAWING IS A CONTROLLED DOCUMENT FOR AMP INCORPORATED. IT IS SUBJECT TO CHANGE AND THE CONTROLLING AND REVISION DATES/NOTATION SHOULD BE CONTACTED FOR THE LATEST REVISION.

| | | | |
|---|-------------------------------|---|--|
| DO NOT SCALE PRINT. UNLESS SPECIFIED DIMENSIONS IN mm (INCHES) TOLERANCES: Q1 2 PLC DEC # 0.13 3 PLC DEC # 0.13 ANGLES # 1/4° | | DR 11-4-93 K. WHITAKER CHK 11-4-93 R. SHANE APP'D 11-4-93 C. CARR PRODUCT SPEC - C. CARR | AMP AMP Incorporated Harrisburg, PA 17105-3608 NAME PLUG, PANEL MOUNT, 2 CIRCUIT, .062 PIN AND SOCKET |
| MATERIAL NYLON, UL 94V-2 NATURAL FINISH - APPLICATION SPEC - WEIGHT - | SIZE 00779 SCALE 5:1 | DRAWING NO. 770341 SHEET 1 OF 1 | PART NO. 770341-1 |

CUSTOMER DRAWING