

4

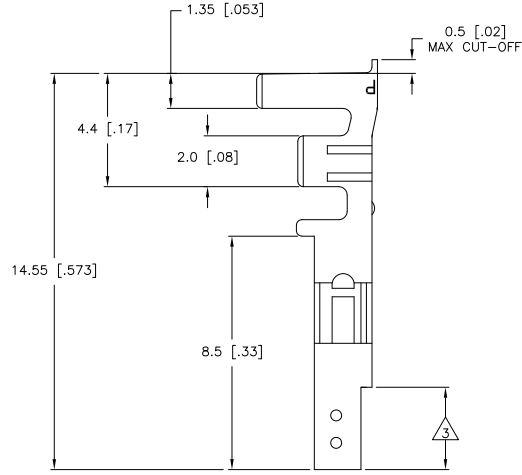
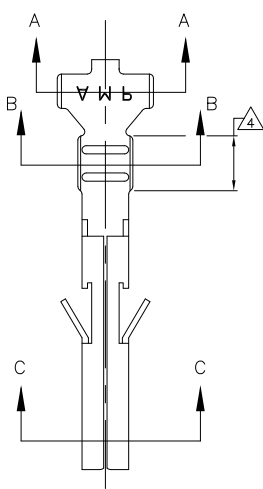
3

2

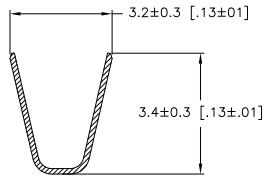
1

THIS DRAWING IS UNPUBLISHED. RELEASED FOR PUBLICATION. ALL RIGHTS RESERVED.

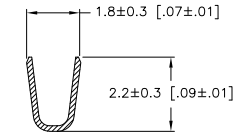
LOC	DIST	REVISIONS		
F	LR	DESCRIPTION	DATE	BY
CM	00			
	A1	REVISED PER ECO-11-005027	11MAR11	RK HMR



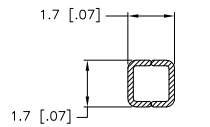
- 1 WIRE RANGE: 0.13-0.32mm² (22-26 AWG).
- 2 INSULATION RANGE: 1.20-1.75 DIA.
- 3 FINISH: 0.76μm MIN GOLD OVER 1.27μm MIN NICKEL REQUIRED ON INNER SURFACE, PERMITTED ON OUTER SURFACE.
- 4 FINISH: 2.54μm MIN TIN ON ALL SURFACES IN THIS AREA.



SECTION A-A



SECTION B-B



SECTION C-C

GOLD $\triangle 3 \triangle 4$	PHOS. BRZ.	1586317-4
PRE-TIN	PHOS. BRZ.	1586317-3
GOLD $\triangle 3 \triangle 4$	BRASS	1586317-2
PRE-TIN	BRASS	1586317-1
FINISH:	MATERIAL:	PART NO.

THIS DRAWING IS A CONTROLLED DOCUMENT.		DATE		TE Connectivity	
DIMENSIONS:	mm [INCHES]	DRW:	S. HOOVER	14-OCT-2003	
		CHK:	D. COLEY	14-OCT-2003	
		APP:	D. COLEY	14-OCT-2003	
		PRODUCT SPEC:			
		APPLICATION SPEC:			
MATERIAL:	FINISH:	WEIGHT:	SIZE:	CAGE CODE:	DRAWING NO:
			A2	00779	C=1586317
			CUSTOMER DRAWING	SCALE:	10:1
				SHEET:	1 of 1
				REV:	A1

1471-9 (3/11)

1586317

B

A