

4

3

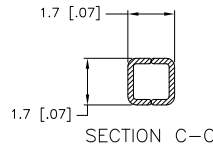
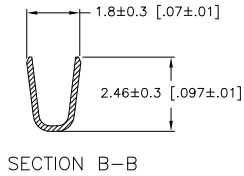
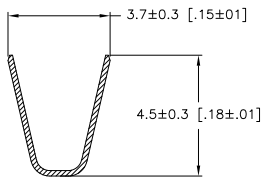
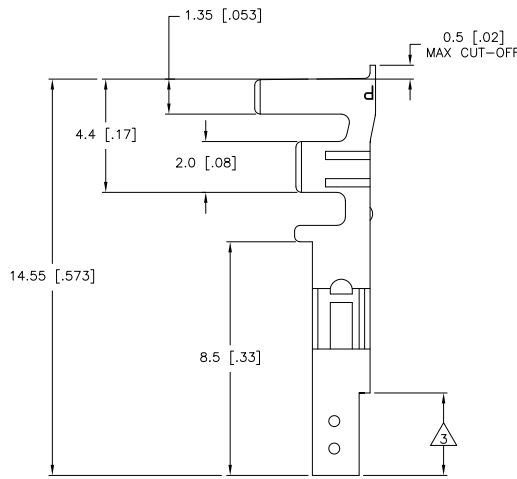
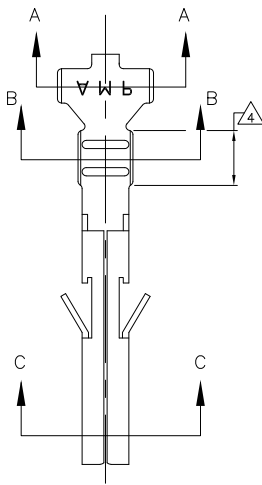
2

1

THIS DRAWING IS UNPUBLISHED. RELEASED FOR PUBLICATION. ALL RIGHTS RESERVED.

LOC	DIST	REVISIONS			
F	LNK	DESCRIPTION	DATE	BY	APPD
CM	00				
	B1	REVISED PER ECO-11-004820	11MAR11	RK	HMR

- 1 WIRE RANGE: 0.2-0.8mm² (24-18 AWG).
- 2 INSULATION RANGE: 1.5-2.4 DIA.
- 3 FINISH: 0.76μm MIN GOLD OVER 1.27μm MIN NICKEL REQUIRED ON INNER SURFACE, PERMITTED ON OUTER SURFACE.
- 4 FINISH: 2.54μm MIN TIN ON ALL SURFACES IN THIS AREA.



GOLD	3 4	PHOS. BRZ.	1586315-4
PRE-TIN		PHOS. BRZ.	1586315-3
GOLD	3 4	BRASS	1586315-2
PRE-TIN		BRASS	1586315-1
FINISH:		MATERIAL:	PART NO.

THIS DRAWING IS A CONTROLLED DOCUMENT.		DATE		TE Connectivity	
DIMENSIONS:	mm [INCHES]	DRW	S. HOOVER	14-OCT-2003	TE Connectivity
TOLERANCES UNLESS OTHERWISE SPECIFIED:		CHK	D. COLEY	14-OCT-2003	TE Connectivity
0 PLC	#	APPD	D. COLEY	14-OCT-2003	TE Connectivity
1 PLC	± 0.3 [01]	NAME			TERMINAL LOOSE PIECE, SOCKET VAL-U-LOK(TM)
2 PLC	± 0.15 [004]	APPLICATION SPEC			
3 PLC	± 0.050 [0020]	WEIGHT			SIZE CASE CODE DRAWING NO
4 PLC	#	CUSTOMER DRAWING			A2 00779 C=1586315
ANGLES	#	SCALE	10:1	SHEET	1 of 1
RESTRICTED TO		REV	B1		

1471-9 (3/11)

1586315

A