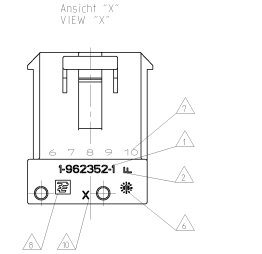
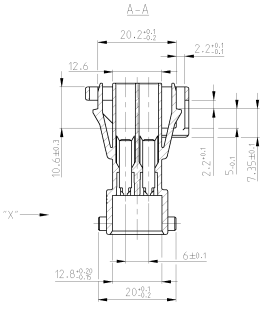
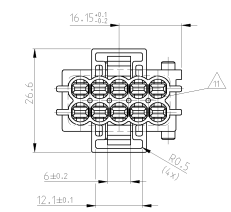
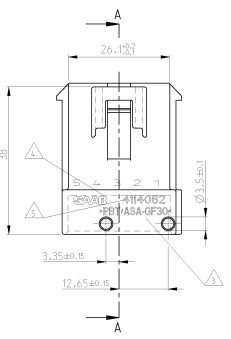
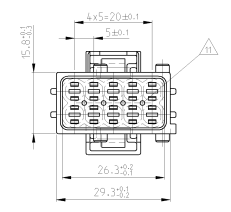
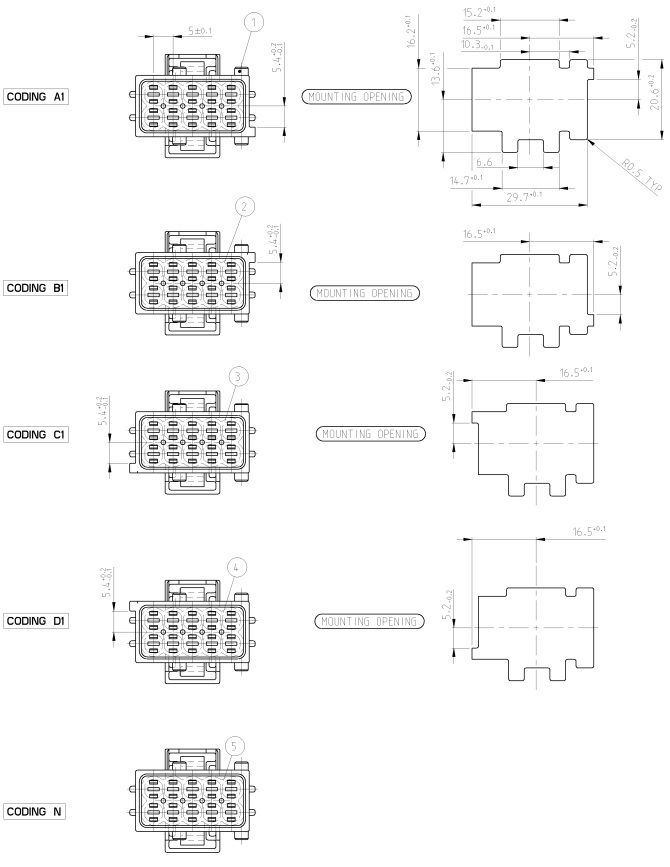


REV. NO.	DATE	DESCRIPTION	BY	CHKD	APPD
1					
2		SEE PEN ESD00-0785-02	EMARCO	B.M.	T.J.
3		SEE PEN ESD00-0785-02	EMARCO	P.M.	T.J.
4		SEE E-07-025304	EMARCO	CA	TR



- NOTES  
 BEMERKUNGEN
- RV NOTE NOT VALID (Bemerkung nicht verwendet)
  - ORDER NUMBER (BESTELLNAMER)
  - REVISION NUMBER (WÄRDENUMMERNUMMER)
  - MATERIAL MARKING (WERKSTOFFBEZEICHNUNG)
  - SMD LOGO
  - SAAB PART NO. (SAAB-FEILNUMMER)
  - PRODUCTION DATE (PRODUKTIONSDATUM)
  - CONTACT CAVITY NUMBER (KONTAKTSPANNENNUMMER)
  - TE- LOGO
  - PACKAGING BULK MATERIAL IN CARDBOARD BOX (VERPACKUNG: ROHSTUFT IN KARTON)
  - TOOL CAVITY MASKING (WÄRDEMASKENUNG)
  - OPTIONAL SUIT OF CORES FOR MATERIAL PROCESS (OPTIONALE KERNEN FÜR MATERIALVERARBEITUNG)

1-962352-1 shown

CUSTOMER PART NO.	TE PART NO.	REV.	CODING	MATERIAL	SURFACE COLOR	DESCRIPTION	ITEM NO.	QUANTITY	UNIT	DATE	BY	CHKD	APPD
4.114.054	5-962352-1	F	CODING N	PBT/ASA-GF-30	WHITE	2.8MM TAB HOUSING, 10 POS.	5			2007.12.07			
4.114.096	4-962352-1	F	CODING D1	PBT/ASA-GF-30	BROWN	2.8MM TAB HOUSING, 10 POS.	4			2007.12.07			
4.114.088	3-962352-1	F	CODING C1	PBT/ASA-GF-30	BLUE	2.8MM TAB HOUSING, 10 POS.	3						
4.114.070	2-962352-1	F	CODING B1	PBT/ASA-GF-30	GREY	2.8MM TAB HOUSING, 10 POS.	2						
4.114.062	1-962352-1	F	CODING A1	PBT/ASA-GF-30	BLACK	2.8MM TAB HOUSING, 10 POS.	1						