

4

3

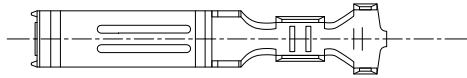
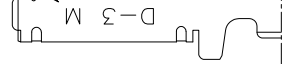
2

1

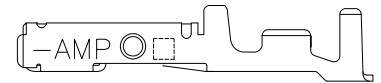
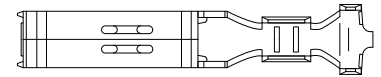
THIS DRAWING IS UNPUBLISHED. RELEASED FOR PUBLICATION JUN. 1990.  
 © COPYRIGHT 1990 By Tyco Electronics Japan G.K. ALL RIGHTS RESERVED.

LOC	DIST	REVISIONS			
P	LTR	DESCRIPTION	DATE	DWN	APVD
C		REVISED PER ECR-11-007143	07JUL2011	T.T	T.M

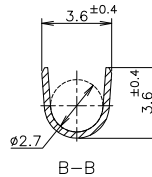
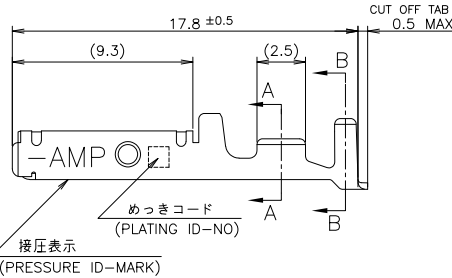
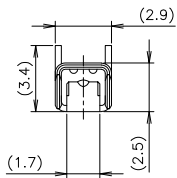
ワイヤレンジ  
WIRE RANGE  
ID MARK



A-A



2-5 ONLY



B-B

めっきコード (PLATING ID-NO)  
接圧表示 (PRESSURE ID-MARK)

- △ 標準接圧型コンタクト：一般向け及び多用途
- △ 高接圧型コンタクト：高電流用及び強振動用
- △ 金めっきは接圧部のみとする
- 4 製品規格：108-5349
- 5 取付け適用規格：114-5148

備考 (REMARK)	接圧表示 (ID-MARK)	めっきコード (PL. ID NO)	仕上 (FINISH)	型番 (P/N)
△	H	5	光沢めっき (BRIGHT TIN-PL.)	2-175217-5
△	H	5	光沢めっき (BRIGHT TIN-PL.)	1-175217-5
△	H	3	0.76μm 最小金めっき (0.76μm MIN. Au-PL.)	1-175217-3
△	H	2	0.38μm 最小金めっき (0.38μm MIN. Au-PL.)	1-175217-2
△	INACTIVE	5	光沢めっき (BRIGHT TIN-PL.)	175217-5
△	INACTIVE	3	0.76μm 最小金めっき (0.76μm MIN. Au-PL.)	175217-3
△	INACTIVE	2	0.38μm 最小金めっき (0.38μm MIN. Au-PL.)	175217-2

- △ CONTACT TYPE; LOW PRESSURE TYPE (FOR GENERAL)
- △ CONTACT TYPE; HIGH PRESSURE TYPE (FOR HIGH CURRENT OR ANTI-VIBRATION)
- △ GOLD-PL. CONTACT AREA ONLY
- 4 PRODUCT SPEC: 108-5349
- 5 APPLICATION SPEC: 114-5148

GENERAL TOLERANCE	単位: 概
10 ≥ : ±0.2	
30 ≥ > 10: ±0.25	
100 ≥ > 30: ±0.3	
ANGLES: ±3°	

THIS DRAWING IS A CONTROLLED DOCUMENT.

DIMENSIONS:	TOLERANCES UNLESS OTHERWISE SPECIFIED:
単位: 概	単位: 概
0 PLC	±-
1 PLC	±-
2 PLC	±-
3 PLC	±-
4 PLC	±-
ANGLES	±-

MATERIAL  
材料  
(COPPER ALLOY)  
銅合金

FINISH  
仕上  
(SEE TABLE)  
表参照

DWN	27JUN1990
CHK	T-YONEBAYASHI
APVD	14FEB1991
NAME	H.OBATA
PRODUCT SPEC	S.MANABE
APPLICATION SPEC	
WEIGHT	
CUSTOMER DRAWING	

WIRE RANGE	AWG 24-20	INSULATION DIA	1.2-2.6
接合電線断面積	(0.2-0.5mm <sup>2</sup> )	絶縁外径	mm
<b>TE</b> TE Connectivity			
M SIZE			
DYNAMIC SERIES REC. CONTACT L/P			
ダイナミックシリーズリセパタクルコンタクト L/P			
SIZE	A3	CAGE CODE	00779
DRAWING NO	175217		
RESTRICTED TO	-		
SCALE	5:1	SHEET	1 OF 1
REV	C		