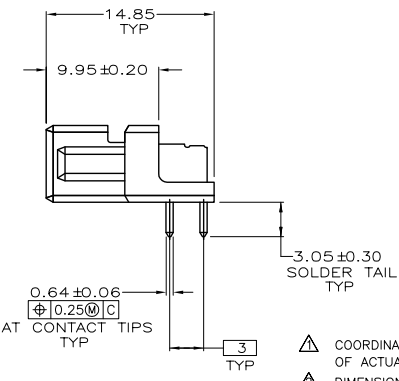
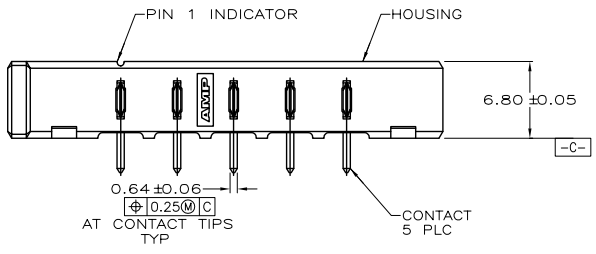
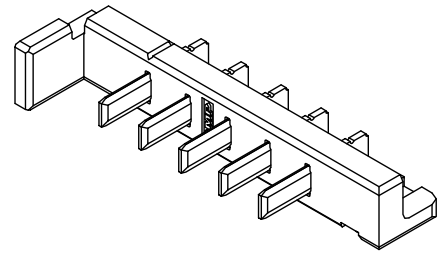
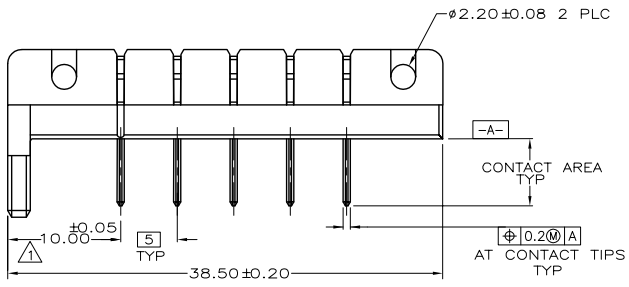
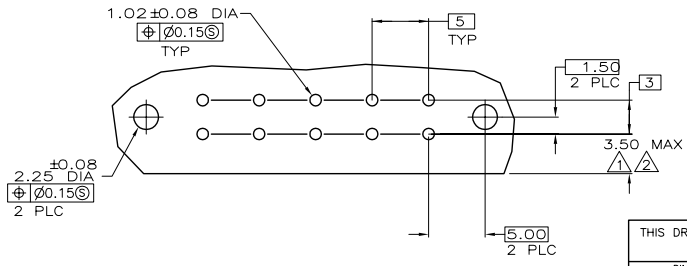


THIS DRAWING IS UNPUBLISHED. RELEASED FOR PUBLICATION
 © COPYRIGHT BY TYCO ELECTRONICS CORPORATION. ALL RIGHTS RESERVED.

LOC		DIST		REVISIONS				
P	LTR	DESCRIPTION	DATE	DWN	APVD			
0		RELEASED	ECR-05-001438	25MAR05	J.Z	I.E		



- ⚠ COORDINATE DIMENSION APPLIES FROM CENTER OF ACTUAL FEATURE.
- ⚠ DIMENSION CAN BE EXCEEDED FOR APPLICATIONS WHERE FINAL MATED POSITION OF PACK IS ABOVE TOP SURFACE OF PCB.
- ⚠ HOUSING: LCP, COLOR BLACK
- ⚠ CONTACTS: BRASS
- ⚠ CONTACTS: 2.54um MIN TIN ON SOLDER TAIL OVER 1.90um MIN NICKEL ALL OVER.



5787246-1

THIS DRAWING IS A CONTROLLED DOCUMENT.		DWN G.DOUTY 06-07-94	Tyco Electronics Corporation Shanghai PRC	
		CHK S.KLINE 06-30-94		
DIMENSIONS: mm		APVD S.KLINE 06-30-94	NAME	
TOLERANCES UNLESS OTHERWISE SPECIFIED:		PRODUCT SPEC		
0 PLC ±- 1 PLC ±- 2 PLC ±0.10 3 PLC ±- 4 PLC ±- ANGLES ±-		HEADER ASSEMBLY, RIGHT ANGLE, LEFT VOLTAGE KEY, 10.8V, BATTERY INTERCONNECTS		
MATERIAL		WEIGHT	SIZE A3	RESTRICTED TO
FINISH		CAGE CODE 00779		DRAWING NO. 5787246
		CUSTOMER DRAWING		SCALE 3:1
		SHEET 1 OF 1		REV 0

AMP 1470-19 REV 31MAR2000

F:\All_Cuys\Julyee_Zhu\Temp\C-5787246_0.dwg