

4

3

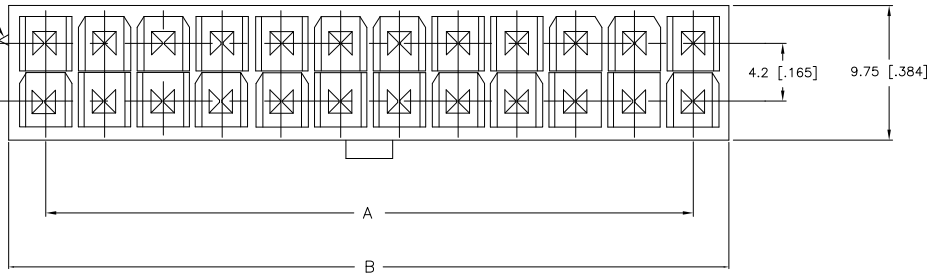
2

1

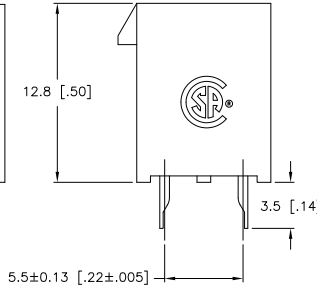
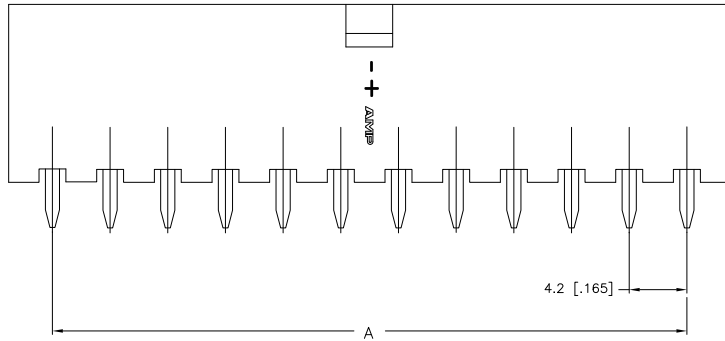
THIS DRAWING IS UNPUBLISHED. RELEASED FOR PUBLICATION. ALL RIGHTS RESERVED.

LOC	DIST	REVISIONS			
F	LNK	DESCRIPTION	DATE	BY	APPD
CM	00				
	B3	REVISED PER ECO-11-017436	29AUG11	HMR	SM

POSITION 1 IDENTIFICATION FEATURE



- 1 MATERIAL: HOUSING-NYLON, UL94V-2 (COLOR-NATURAL, COLOR OF PARTS MAY VARY) CONTACTS-0.25 [0.010] THICK BRASS ALLOY.
- 2 CONTACT FINISH: 0.002032 [0.00080] MIN MATTE TIN OVER 0.000381 [0.00015] MIN NICKEL OVER ENTIRE CONTACT.
- 3 MATES WITH VAL-U-LOK(TM) RECEPTACLE HOUSINGS.



24	46.2±0.25 [1.82±0.01]	51.6 [2.03]	2-1586037-4
22	42.0±0.25 [1.65±0.01]	47.4 [1.87]	2-1586037-2
20	37.8±0.25 [1.49±0.01]	43.2 [1.70]	2-1586037-0
18	33.6±0.25 [1.32±0.01]	39.0 [1.54]	1-1586037-8
16	29.4±0.25 [1.16±0.01]	34.8 [1.37]	1-1586037-6
14	25.2±0.25 [0.99±0.01]	30.6 [1.21]	1-1586037-4
12	21.0±0.25 [0.83±0.01]	26.4 [1.04]	1-1586037-2
10	16.8±0.13 [0.66±0.005]	22.2 [0.87]	1-1586037-0
8	12.6±0.13 [0.50±0.005]	18.0 [0.71]	1586037-8
6	8.4±0.13 [0.33±0.005]	13.8 [0.54]	1586037-6
4	4.2±0.13 [0.17±0.005]	9.6 [0.38]	1586037-4
2		5.4 [0.21]	1586037-2
POS	A	B±0.25[0.1]	PART NUMBER

2-1586037-4 SHOWN

THIS DRAWING IS A CONTROLLED DOCUMENT.

DIMENSIONS: mm [INCHES] 0 PLG ± # 1 PLG ± 0.05 [0.02] 2 PLG ± 0.25 [0.010] 3 PLG ± # 4 PLG ± # ANGLES ± # FINISH ± #	DIM S. HOOVER 18-SEP-2002 CHK D. COLEY 18-SEP-2002 D. COLEY 18-SEP-2002 NAME PRODUCT SPEC APPLICATION SPEC WEIGHT CUSTOMER DRAWING	TE Connectivity VERTICAL HEADER WITHOUT PEGS, WITH DRAIN HOLES VAL-U-LOK(TM) SIZE CASE CODE DRAWING NO A2 00779 C=1586037 SCALE 5:1 SHEET 1 of 1 REV B3
--	---	---

PCB LAYOUT: COMPONENT SIDE
RECOMMENDED BOARD THICKNESS 1.60 [0.063]

