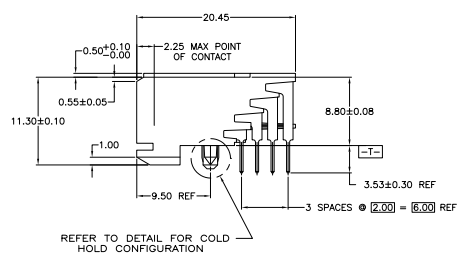
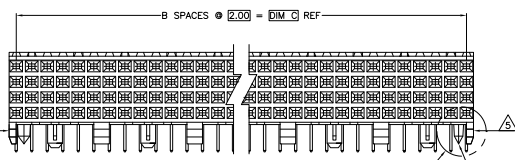
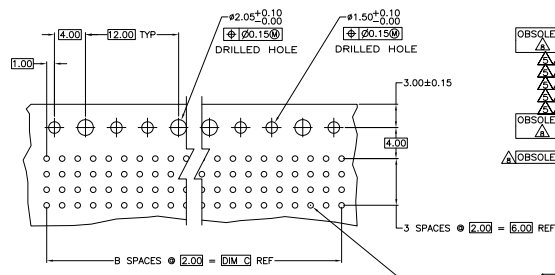
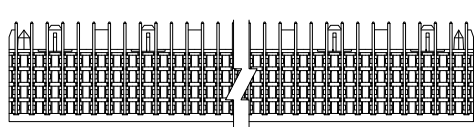
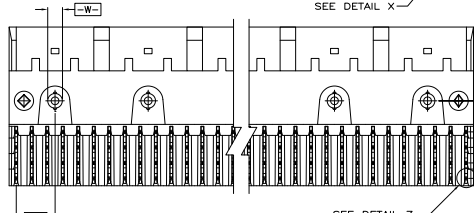


DETAIL X
SCALE 10:1

DETAIL Z
SCALE 20:1

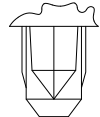


REFER TO DETAIL FOR COLD HOLD CONFIGURATION



RECOMMENDED CIRCUIT PATTERN
 PER IPC-D350 TYPE II, CLASS C
 (COMPONENT SIDE)

- △ HOUSING MATERIAL: LIQUID CRYSTAL POLYMER.
COLOR: NATURAL.
- △ CONTACT MATERIAL: PHOSPHOR-BRONZE.
- △ CONTACT FINISH:
UNDERPLATE (ENTIRE CONTACT) -
0.00127 MIN NICKEL PER SAE-AMS-QQ-N-290.
ON MATING SURFACES -
CONFORMS TO ALL TESTING SPECIFIED FOR TELCORDIA
UNCONTROLLED ENVIRONMENT
ON LEADS -
0.00381 MIN TIN PER ASTM B 545, OVER UNDERPLATE
LUBRICATION (MIN MATING SURFACES):
SURFACE CONDITIONER AFTER PLATING.
- △ PART MARKING, LOCATED APPROXIMATELY AS SHOWN.
- △ CUSTOMIZED PART, HOUSING MOLDED WITHOUT END GUIDE LUGS.
- △ OBSOLETE PART NUMBER.
- △ CONTACT FINISH:
UNDERPLATE (ENTIRE CONTACT) -
0.00127 MIN NICKEL PER SAE-AMS-QQ-N-290.
ON MATING SURFACES -
CONFORMS TO ALL TESTING SPECIFIED FOR TELCORDIA
UNCONTROLLED ENVIRONMENT
ON LEADS -
FLASH GOLD PER ASTM B 488, OVER UNDERPLATE
LUBRICATION (MIN MATING SURFACES):
SURFACE CONDITIONER AFTER PLATING.
- △ OBSOLETE PARTS: OBSOLETE CIS STREAMLINING PER D.RENAUD/D.SINISI



TYPICAL COLD HOLD
FOR ALL ASSEMBLIES

	NO	70	35	71.88	144	2-5536510-8
	NO	94	47	95.88	192	2-5536510-7
	NO	46	23	47.88	96	2-5536510-6
	NO	22	11	23.88	48	2-5536510-5
△ OBSOLETE	YES	94	47	95.88	192	2-5536510-4
△	YES	46	23	47.88	96	2-5536510-3
△	NO	34	17	35.88	72	1-5536510-5
△	NO	22	11	23.88	48	1-5536510-4
△	NO	94	47	95.88	192	1-5536510-3
△	NO	106	53	107.88	216	1-5536510-2
△	NO	70	35	71.88	144	1-5536510-1
△ OBSOLETE	NO	130	65	131.88	264	1-5536510-0
△	NO	106	53	107.88	216	5536510-9
△ OBSOLETE	NO	118	59	119.88	240	5536510-8
	NO	82	41	83.88	168	5536510-7
	NO	58	29	59.88	120	5536510-6
	NO	70	35	71.88	144	5536510-5
	NO	94	47	95.88	192	5536510-4
	NO	46	23	47.88	96	5536510-3
	NO	22	11	23.88	48	5536510-2
	YES	10	5	11.88	24	5536510-1

THIS DRAWING IS A CONTROLLED DOCUMENT.

DESIGNED BY	APPROVED BY	DATE	REV
DRN	DRN		

RECEPACLE ASSEMBLY, SIGNAL MODULE,
 Z-PACK 2mm FB, 4 ROW, 3.53mm LEAD LENGTH

DATE: 00779 ©=5536510

CUSTOMER DRAWING