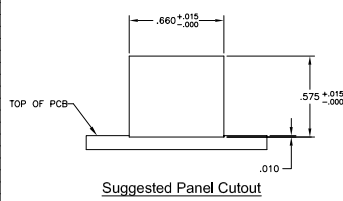
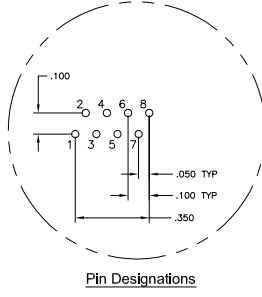
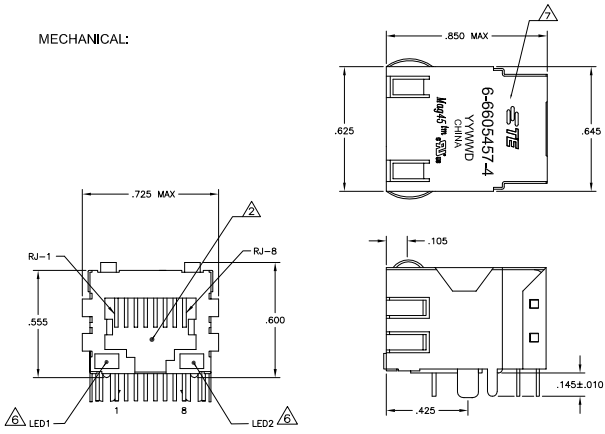
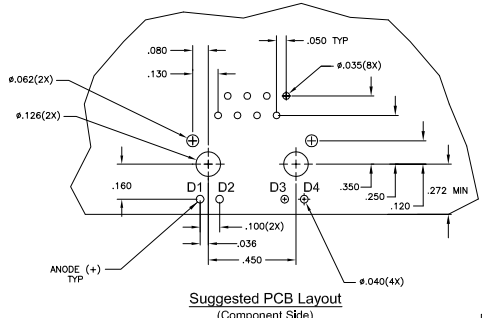
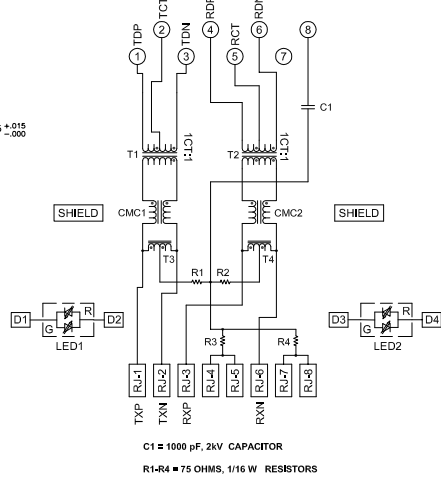


REV	DESCRIPTION	DATE	BY	CHK	APP
A	REV PER ECO-09-000306	10052006	VL	LR	
C	ECO-11-015766	20040201	EL	LR	

MECHANICAL:



415ETP1 SERIES MAGNETIC CIRCUIT



- MATERIALS:**
 HOUSING - THERMOPLASTIC PET POLYESTER FLAMMABILITY RATING UL 94V-0.
 SHIELD - .016" THICK C28400 BRASS PREPLATED WITH 30 INCH MIN SEMI-BRIGHT NICKEL.
 SOLDER TABS POST DIPPED WITH 100 INCH MIN SAC SOLDER.
 MOD JACK CONTACTS - 0.0157 X 0.018" PHOSPHOR BRONZE, 50 INCH MIN OVERALL NICKEL UNDERPLATE WITH SELECT 50 INCH MIN HARD GOLD FINISH PLATE.
 SOLDER TAILS WITH 100 INCH MIN MATTE TIN AND/OR SAC SOLDER DIP.
 LIGHT EMITTING DIODE (LED) - DIFFUSED EPOXY LENS, 0.20" X 0.20" CARBON STEEL WIREFRAME LEADS PRE-PLATED WITH 80 INCH SILVER OVER 40 INCH NICKEL UNDERPLATE OVER 40 INCH COPPER UNDERPLATE. POST-PLATED WITH 100 INCH MIN MATTE TIN AND/OR SAC SOLDER DIP OR PURE TIN SOLDER DIP.
- RJ15 JACK CAVITY CONFORMS TO FCC RULES AND REGULATIONS PART 68, SUB PART F.**
- MAGNETICS**
 -IMPEDANCE: 100 OHMS
 -TURNS RATIO (CHP CABLE): TX = 11, RX = 11
 -OPEN CIRCUIT INDUCTANCE (OCIL): 350 μH MIN @ 100kHz, 0.1VRMS.
 -BROAD BAND FROM -40°C TO +85°C, TX AND RX
 -PERFORMANCE @ 25°C
 INSERTION LOSS (IL): 1.6dB MAX FROM 0.5MHz TO 100MHz
 RETURN LOSS (RL): 18dB MIN FROM 0.5MHz TO 30MHz
 18-20LOG(f/30)dB MIN FROM 30 MHz TO 60MHz
 12dB MIN FROM 60 MHz TO 80MHz
 CROSSTALK ATTENUATION: 35dB MIN FROM 0.5MHz TO 4MHz
 33-20*LOG(f/50)dB MIN FROM 4.0 MHz TO 100MHz
 COMMON MODE REJECTION RATIO (CMRR): 30dB MIN FROM 0.5MHz TO 100MHz
 ISOLATION VOLTAGE 225VDC (MAX) FOR 60 SECONDS WITH A RISE TIME OF 500V/SEC.
4. OPERATING TEMPERATURE: FROM -40° TO +85°C.
- INDICATED CONNECTIONS ARE FOR N/C CONFIGURATION. THE MAGNETICS ARE SYMMETRIC, AND SUPPORT AUTO-MDI/MDIX.**
- LEDS ARE DRIVEN WITH CONSTANT CURRENT AT APPROX 20 mA**
 LED COLOR: DOMINANT WAVELENGTH (λD): GREEN 568 nm TYP @ IF=20 mA
 FORWARD VOLTAGE (VF): GREEN 2.2V TYP @ IF=20 mA
 LED COLOR: DOMINANT WAVELENGTH (λD): RED 640 nm TYP @ IF=20 mA
 FORWARD VOLTAGE (VF): RED 2.2V TYP @ IF=20 mA
- TE CONNECTIVITY LOGO, PART NUMBER, DATE CODE, COUNTRY OF ORIGIN AND AGENCY APPROVAL MARKING IN APPROXIMATE LOCATION SHOWN.**
8. THE PART IS RECOMMENDED FOR WAVE SOLDERING PROCESS. PREHEAT TEMPERATURE IS 120°C TO 160°C, 120 SECONDS TO 180 SECONDS, PEAK WAVE SOLDERING TEMPERATURE IS 260°C MAX, 10 SECONDS MAX.

ENVIRONMENTAL SERIES	GREEN/RED	GREEN/RED	6-6605457-4	PART NUMBER
ENVIRONMENTAL SERIES	GREEN/RED	GREEN/RED	6-6605457-4	PART NUMBER
ENVIRONMENTAL SERIES	GREEN/RED	GREEN/RED	6-6605457-4	PART NUMBER
ENVIRONMENTAL SERIES	GREEN/RED	GREEN/RED	6-6605457-4	PART NUMBER
ENVIRONMENTAL SERIES	GREEN/RED	GREEN/RED	6-6605457-4	PART NUMBER

THIS DRAWING IS A CONTROLLED DOCUMENT.	DATE	BY	CHK	APP
DATE	BY	CHK	APP	
DATE	BY	CHK	APP	
DATE	BY	CHK	APP	
DATE	BY	CHK	APP	