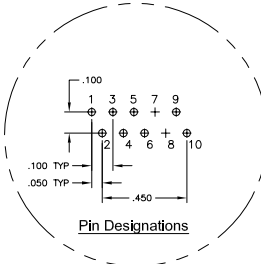
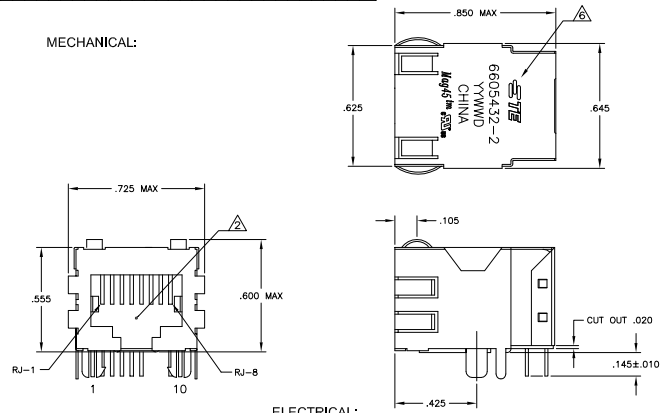
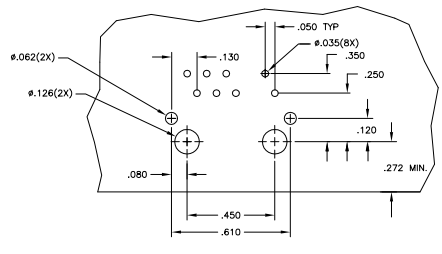
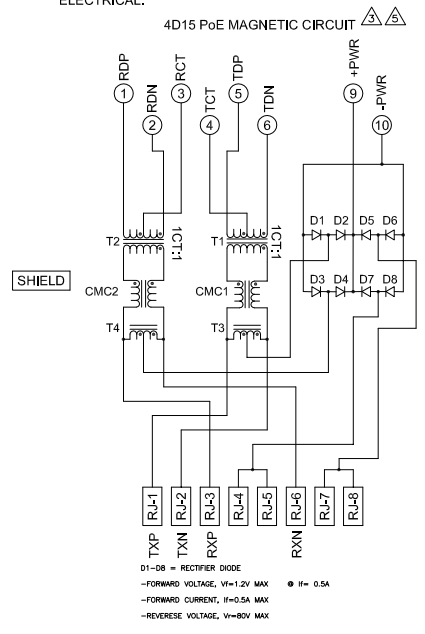


REV	DATE	DESCRIPTION	BY	CHK	APP
AA	22				
C		REV PER ECO-08-026804			
D		ECO-11-015773			

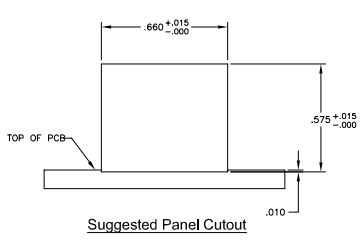
MECHANICAL:



ELECTRICAL:



Suggested PCB Layout
(Component Side)



Suggested Panel Cutout

- △ MATERIALS:
 HOUSING - THERMOPLASTIC PET POLYESTER FLAMMABILITY RATING UL 94V-0.
 SHIELD - .010" THICK, C26800 BRASS PREPLATED WITH 30μINCH MIN SEMI-BRIGHT NICKEL. SOLDER TABS POST DIPPED WITH 100μINCH MIN SAC SOLDER.
 MOD JACK CONTACTS - 0.0157 X 0.018" PHOSPHOR BRONZE, 50μINCH MIN OVERALL NICKEL UNDERPLATE WITH SELECT 50μINCH MIN HARD GOLD FINISH PLATE.
 SOLDER TAILS WITH 100μINCH MIN MATTE TIN AND/OR SAC SOLDER DIP.
- △ RJ45 JACK CAVITY CONFORMS TO FCC RULES AND REGULATIONS PART 68, SUB PART F.
- △ MAGNETICS
 -IMPEDANCE: 100 OHMS
 -TURNS RATIO (CHIP CABLE): TX = 11, RX = 11
 -OPEN CIRCUIT INDUCTANCE (OCL): 350nH MIN @100kHz, 0.1Vrms,
 8mA DC BIAS FROM 0°C TO 70°C, TX AND RX
 -POE CURRENT: 350mA DC MAX
 -PERFORMANCE @ 25°C
 INSERTION LOSS (IL): 11dB MAX FROM 0.5MHz TO 100MHz
 RETURN LOSS (RL): 18dB MIN FROM 0.5MHz TO 30MHz
 18-20LOG(f/30MHz) MIN FROM 30.1MHz TO 60MHz
 12dB MIN FROM 60.1MHz TO 80MHz
 CROSSTALK ATTENUATION: 35dB MIN FROM 0.5MHz TO 40MHz
 33-20+LOG(f/500MHz) MIN FROM 4.0MHz TO 100MHz
 COMMON MODE REJECTION RATIO (CMRR): 30dB MIN FROM 0.5MHz TO 100MHz
 -ISOLATION VOLTAGE: 1500VAC (MAX) AT 60Hz FOR 60 SECS
- 4. OPERATING TEMPERATURE: FROM 0°C TO +70°C.
- △ INDICATED CONNECTIONS ARE FOR NIC CONFIGURATION. THE MAGNETICS ARE ASYMMETRIC, AND THEREFORE ARE NOT AUTO-MD/MDOX CAPABLE.
- △ TE CONNECTIVITY LOGO, PART NUMBER, DATE CODE, COUNTRY OF ORIGIN AND AGENCY APPROVAL MARKING IN APPROXIMATE LOCATION SHOWN.
- 7. THE PART IS RECOMMENDED FOR WAVE SOLDERING PROCESS.
 PREHEAT TEMPERATURE IS 120°C TO 160°C, 120 SECONDS TO 180 SECONDS.
 PEAK SOLDERING TEMPERATURE IS 260 °C MAX, 10 SECONDS MAX.

D1-D8 = RECTIFIER DIODE
 -FORWARD VOLTAGE, V_F=1.2V MAX
 -FORWARD CURRENT, I_F=0.5A MAX
 -REVERSE VOLTAGE, V_R=80V MAX
 ● If = 0.5A

THIS DRAWING IS A CONTROLLED DOCUMENT.		IN ATTACH - CONTROLLED DOCUMENT	
REVISIONS	DATE	DESCRIPTION	BY
AA	22		
C		REV PER ECO-08-026804	
D		ECO-11-015773	

6605432-2	PART NUMBER
TE Connectivity	
1X1 MAG45(M), MODULAR JACK, 4D15 SCHEMATIC, 4D15 SERIES PoE CIRCUIT, SHIELDED, NO LEADS	
108-2100	MANUFACTURE PART
00779	DATE CODE
6605432	PART NUMBER
NTS	SCALE
1	SHEET
D	REV