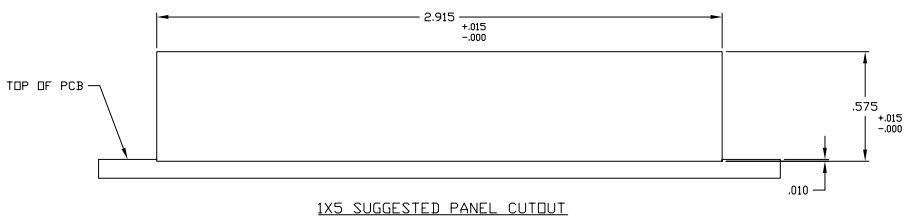
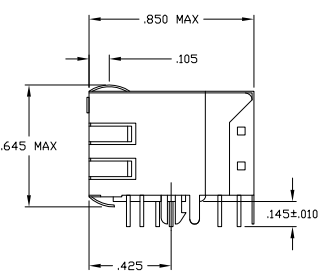
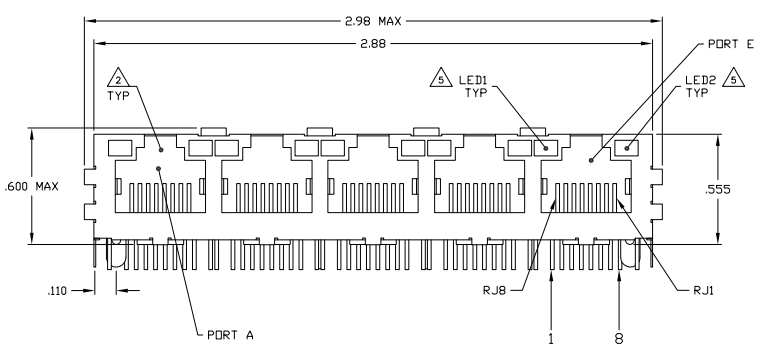
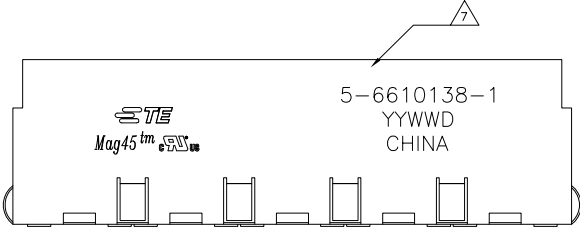


THIS DRAWING IS UNCLASSIFIED
 RECORD FOR FULCRUM
 © 2008 ST
 ALL RIGHTS RESERVED

REV	DATE	DESCRIPTION	BY	CHK	APP
AA	22				
C		REV PER ECO-08-012889			DC TX
D		ECO-11-013423			EL LR

MECHANICAL:



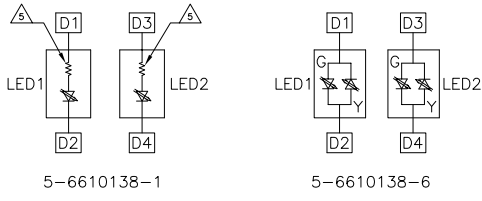
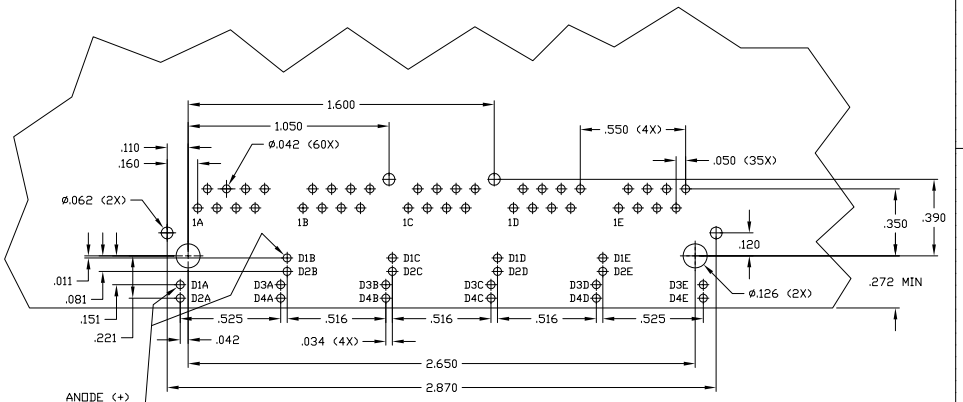
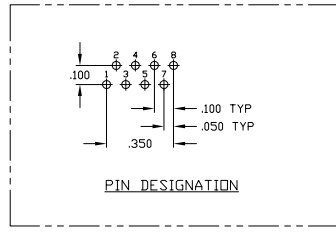
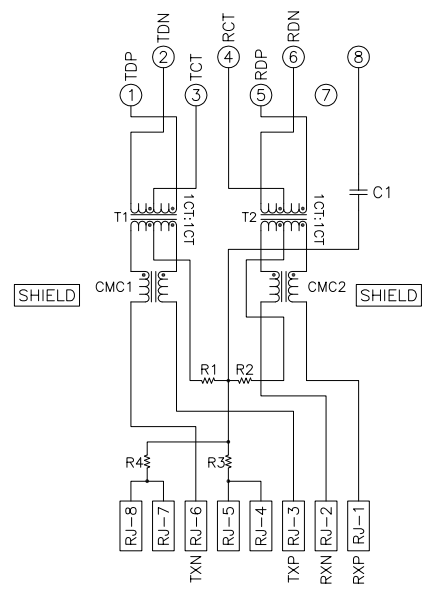
- MATERIALS:**
- HOUSING - THERMOPLASTIC PET POLYESTER FLAMMABILITY RATING UL 94V-0.
 - SHIELD - 0.018" THICK, C20090 BRASS PREPLATED WITH 38.1UMIN MIN SEMI-BRIGHT NICKEL. SOLDER TABS POST DIPPED WITH 100UMIN MIN SAC SOLDER.
 - MOD JACK CONTACTS - 0.915" X 0.018" PHOSPHOR BRONZE, 50.UMIN MIN OVERALL NICKEL UNDERPLATE WITH SELECT 50UMIN MIN HARD GOLD FINISH PLATE. SOLDER TABS WITH 100UMIN MIN MATTE TIN AND/OR SAC SOLDER DIP.
 - LIGHT EMITTING DIODES - DIFFUSED EPOXY LENS, 0.002" X 0.002" CARBON STEEL WIREFRAME LEADS PRE-PLATED WITH BRUNNEN SILVER OVER 4UMIN NICKEL UNDERPLATE OVER 4UMIN COPPER UNDERPLATE. POST-PLATED WITH 100UMIN MIN MATTE TIN AND/OR SAC SOLDER DIP OR PURE TIN SOLDER DIP.
- MAGNETICS**
- IMPEDANCE: 100 OHMS
 - TURN RATIO (EQU. CABLE): TX = 1, RX = 11
 - OPEN CIRCUIT INDUCTANCE (OCL): 350nH MIN @100MHz, 0.1VRMS, BRIDGE BIAS FROM 0°C TO 70°C, TX AND RX
 - PERFORMANCE @ 25°C
 - INSERTION LOSS (IL): 1.5dB MAX FROM 0.5MHz TO 100MHz
 - RETURN LOSS (RL): 30dB MIN FROM 0.5MHz TO 100MHz
 - 18-20LOG(I)/30dB MIN FROM 30.1MHz TO 60MHz
 - 12dB MIN FROM 60.1MHz TO 80MHz
 - 33-20LOG(I)/50dB MIN FROM 40.1MHz TO 100MHz
 - CROSS-TALK ATTENUATION: 35dB MIN FROM 0.5MHz TO 40MHz
 - COMMON MODE REJECTION RATIO (CMRR): 30dB MIN FROM 0.5MHz TO 100MHz
 - ISOLATION VOLTAGE: 250VDC MAX FOR 60 SECONDS WITH A RISE TIME OF 500V/SEC AND WITH ALL PORTS CONNECTED.
- OPERATING TEMPERATURE: FROM 0°C TO +70°C.**
- THE 250 OHM LED RESISTORS ARE OPTIONAL. PLEASE SEE CHART FOR PRESENCE OR ABSENCE OF LED RESISTORS. IF THE LED WITHOUT 250 OHM RESISTORS, LED IS DRIVEN WITH CONSTANT CURRENT AT APPROX 20mA LED COLOR:
- DOMINANT WAVELENGTH (λD): GREEN 568 nm TYP. at If=20mA
 - FORWARD VOLTAGE (VF): GREEN 2.2V TYP. at If=20mA
 - DOMINANT WAVELENGTH (λD): YELLOW 588 nm TYP. at If=20mA
 - FORWARD VOLTAGE (VF): YELLOW 2.1V TYP. at If=20mA
- IF THE LED WITH 250 OHM RESISTORS, LED IS DRIVEN WITH 5V VOLTAGE AND THE MAX OPERATING CURRENT IS 20mA LED COLOR:
- DOMINANT WAVELENGTH (λD): GREEN 568 nm TYP. at Vf=5V
 - FORWARD CURRENT (If): GREEN 12 mA TYP. at Vf=5V
 - DOMINANT WAVELENGTH (λD): YELLOW 588 nm TYP. at Vf=5V
 - FORWARD CURRENT (If): YELLOW 13 mA TYP. at Vf=5V
- INDICATED CONNECTIONS ARE FOR HUB CONFIGURATION. THE MAGNETICS ARE SYMMETRICAL AND SUPPORT AUTO-HSD/HDX.
- TE CONNECTIVITY LOGO, PART NUMBER, DATE CODE, COUNTRY OF ORIGIN AND AGENCY APPROVAL MARKING IN APPROXIMATE LOCATION SHOWN.
- THESE PARTS ARE RECOMMENDED FOR WAVE SOLDERING PROCESS. PEAK WAVE SOLDERING TEMPERATURE IS 265°C MAX, 10 SECONDS MAX.

NO	GREEN/YELLOW	GREEN/YELLOW	5-6610138-6
YES	GREEN	YELLOW	5-6610138-1
LED RESISTORS	LED1	LED2	PART NUMBER

THIS DRAWING IS A CONTROLLED DOCUMENT.		TE CONNECTIVITY	
REV	DATE	DESCRIPTION	BY
AA	22		
C		REV PER ECO-08-012889	
D		ECO-11-013423	
SERIES		1X5 MAG45(TM) MODULAR JACK, 7H2 SCHEMATIC, 766 SERIES CIRCUIT, DECOUPLING CAPACITOR, SHIELDED, WITH LEADS, 53 TABS	
PART NUMBER		5-6610138	
DATE CODE		YYWW	
COUNTRY OF ORIGIN		CHINA	
AGENCY APPROVAL		TE CONNECTIVITY	
CUSTOMER DRAWING		00779	
DATE		11/2008	
PAGE		1 OF 2	

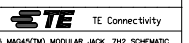
REV	DATE	REVISIONS	BY	CHK	APP
AA	22	REWORK			
		SEE SHEET 1			

766 SERIES MAGNETIC CIRCUIT



C1 = 1000pF, 2KV CAPACITOR
R1-R5 = 75 OHMS, 1/4W RESISTORS

THIS DRAWING IS A CONTROLLED DOCUMENT.		DATE	BY	APPROVED
DESIGNED	ORIGINATOR	DATE	BY	APPROVED
DRAWN	DATE	BY	APPROVED	
CHECKED	DATE	BY	APPROVED	
APPROVED	DATE	BY	APPROVED	
CUSTOMER DRAWING		DATE	BY	APPROVED



1X5 MAG45(TM) MODULAR JACK, 766 SERIES CIRCUIT, DECOUPLING CAPACITOR, SHIELDED, WITH LEADS, 53 PINS