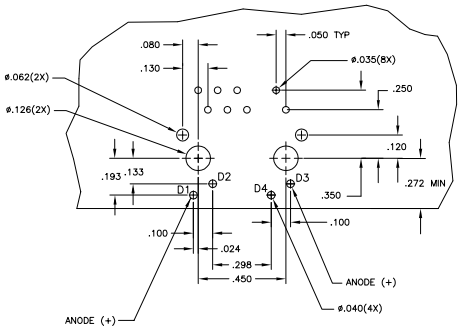
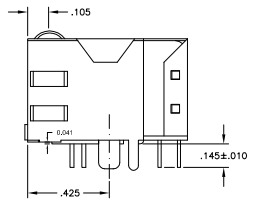
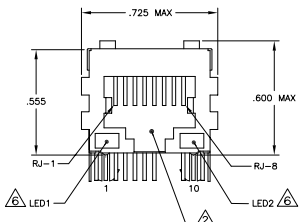
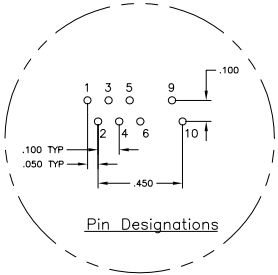
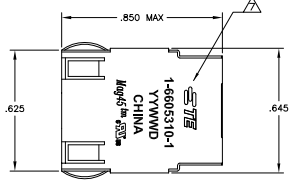
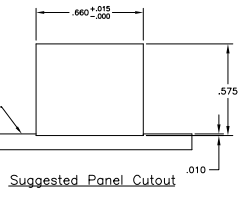
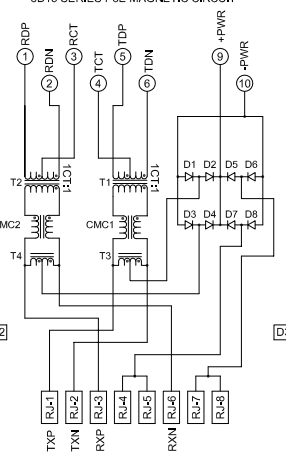


REV	DATE	DESCRIPTION	BY	CHK	APP
AA	22	REVISED PER ECO-11-010839	20MAY11	RKX	HMR
D		ECO-11-015773	20OCT2011	EL	LR

MECHANICAL:



ELECTRICAL:
3D15 SERIES PoE MAGNETIC CIRCUIT



- MATERIALS:**
HOUSING - THERMOPLASTIC PET POLYESTER FLAMMABILITY RATING UL 94V-0.
SHIELD - .010" THICK, C26800 BRASS PREPLATED WITH 30μINCH SEMI-BRIGHT NICKEL SOLDER TABS POST DIPPED WITH 100μINCH MIN SAC SOLDER.
MOD JACK CONTACTS - 0.0157 X 0.018" PHOSPHOR BRONZE, 50μINCH MIN OVERALL NICKEL UNDERPLATE, WITH SELECT 50μINCH MIN HARD GOLD FINISH PLATE SOLDERABLES WITH 100μINCH MIN MATTE TIN AND/OR SAC SOLDER DIP.
LIGHT EMITTING DIODE(LED) - DIFFUSED EPOXY LENS, .020" X .020" CARBON STEEL WIREFRAME LEADS PRE-PLATED WITH 80μINCH SILVER OVER 40μINCH NICKEL UNDERPLATE OVER 40μINCH COPPER UNDERPLATE POST-PLATED WITH 100μINCH MIN MATTE TIN AND/OR SAC SOLDER DIP OR PURE TIN SOLDER DIP.
- RJ45 JACK CAVITY CONFORMS TO FCC RULES AND REGULATIONS PART 68, SUB PART F.**
- MAGNETICS**
-IMPEDANCE: 100 OHMS
-TURNS RATIO (CHP CABLE): TX = 11, RX = 11
-OPEN CIRCUIT INDUCTANCE (OCL): 350μH MIN @100MHz, 0.1VRMS, 8mA DC BIAS FROM 0°C TO 70°C, TX AND RX
-POE CURRENT: 350mA DC MAX
-PERFORMANCE @ 25°C
INSERTION LOSS (IL): 1.1dB MAX FROM 0.5MHz TO 100MHz
RETURN LOSS (RL): 18dB MIN FROM 0.5MHz TO 30MHz
18-20LOG(f/30dB) MIN FROM 30.1MHz TO 60MHz
12dB MIN FROM 60.1MHz TO 80MHz
CROSSTALK ATTENUATION: 35dB MIN FROM 0.5MHz TO 40MHz
33-20LOG(f/50dB) MIN FROM 4.0MHz TO 100MHz
COMMON MODE REJECTION RATIO (CMRR): 30dB MIN FROM 0.5MHz TO 100MHz
-ISOLATION VOLTAGE: 1500V AC (MAX) AT 60Hz FOR 60 SECS.
- 4. OPERATING TEMPERATURE: FROM 0°C TO +70°C.**
- INDICATED CONNECTIONS ARE FOR NIC CONFIGURATION. THE MAGNETICS ARE SYMMETRIC, AND SUPPORT AUTO-NDI/MDIX.**
- THE 250 OHM RESISTOR IS INCLUDED IN THE LEADS.**
LEDS ARE DRIVEN WITH 5V VOLTAGE AND THE MAX OPERATING CURRENT IS 20mA. LED COLOR: DOMINANT WAVELENGTH (λD): GREEN 568 nm TYP @ VF=5V FORWARD CURRENT (IF): GREEN 12mA TYP @ VF=5V
- TYCO ELECTRONICS LOGO, PART NUMBER, DATE CODE, COUNTRY OF ORIGIN AND AGENCY APPROVAL MARKING IN APPROXIMATE LOCATION SHOWN.**
- 8. THE PART IS RECOMMENDED FOR WAVE SOLDERING PROCESS. PREHEAT TEMPERATURE IS 120°C TO 160°C, 120 SECONDS TO 180 SECONDS, PEAK WAVE SOLDERING TEMPERATURE IS 260°C MAX, 10 SECONDS MAX.**

D1-D8 = RECTIFIER DIODES
FORWARD VOLTAGE, $V_f = 1.2V$ MAX @ $I_f = 0.5A$
FORWARD CURRENT, $I_f = 0.5A$ MAX
REVERSE VOLTAGE, $V_r = 80V$ MAX

GREEN		GREEN		1-6605310-1	
LED1	LED2	PART NUMBER			
<p>THIS DRAWING IS A CONTROLLED DOCUMENT. IT IS ATTACHED TO THE DRAWING OF THE PART. IT IS THE RESPONSIBILITY OF THE CUSTOMER TO MAINTAIN THE CONTROL OF THIS DOCUMENT.</p>					
DESIGNATION	REV	DATE	BY	CHK	APP
108-2100					
<p>1X1 MAG45(TN) MODULAR JACK, 40N2 SCHEMATIC, 3D15 SERIES PoE CIRCUIT, SHIELDED, WITH RESISTOR LEADS</p>					
<p>REV: 00779 (C) 6605310</p>					
<p>CUSTOMER DRAWING</p>					