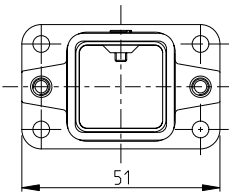
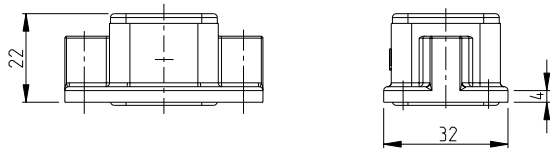
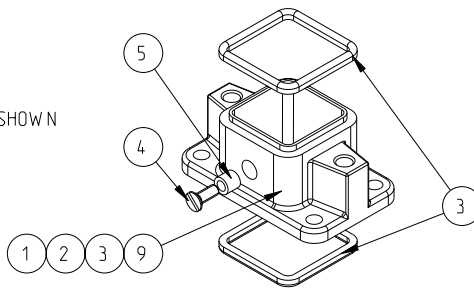
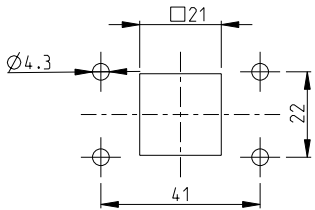


THIS DRAWING IS UNPUBLISHED. RELEASED FOR PUBLICATION 2006
 © COPYRIGHT 2006 BY TYCO ELECTRONICS CORPORATION. ALL RIGHTS RESERVED.

LOC	DIST	REVISIONS				
P	LTR	DESCRIPTION	DATE	DWN	APVD	
A3		ECR-09-023155	22OCT2009	VG	AR	
A4		ECR-09-009777	17MAY2010	SR	AR	



PN 1-5 AS SHOWN



Notes

- SUITABLE HOUSINGS: SERIES HIP, SIZE 1
CUSTOMER DRAWING 1102600, 1106408, 1106200
- STANDARDS:
DIN EN 61984, DIN EN 60664-1
- TOOL:
SLOTTED SCREW DRIVER 4.0x0.8
- VARNISH ON INSIDE AREA NOT NECESSARY
- PACKAGING:
10 SETS IN A CARTON, PRE-MOUNTED

1								
	x	x	-	BULKHEAD HOUSING	ALU	BLACK	SERIES HIP-K - WITHOUT LOGO	9
	-	-	x	GLUE	CYANACRYLAT	BLACK	LOCTITE 480	8
	-	-	-	GLUE	CYANACRYLAT	NATURAL	LOCTITE 401	7
1	1	1	1	HOSE SECTION	FKM	BLACK	SERIES HIP, Ø3x1x4.5	6
1	1	1	1	SCREW, SLOTTED COUNTERS. FLAT HEAD	STAINL. STEEL	BLANK	M3x8 DIN EN ISO 2009	5
2	2	2	2	PROFILE SEAL	FKM	BLACK	SERIES EMV / HIP	4
	1	-	-	BULKHEAD HOUSING	ALU	BLACK	SERIES HIP-K WEIDMÜLLER LOGO	3
	-	1	-	BULKHEAD HOUSING	ALU	BLACK	SERIES HIP-K	2
	-	-	1	BULKHEAD HOUSING	ALU	GREY	SERIES HIP	1
0-2	0-1	2-5	1-5					
				DESCRIPTION	MATERIAL	COLOR/SURFACE	NOTE	ITEM

0-2	HIP-K.3/4.AG-N
0-1	HIP-K.3/4.AG.WE
2-5	HIP-K.3/4.AG
1-5	HIP.3/4.AG
PART NO.	ORDERING TEXT

DIMENSIONS:		TOLERANCES UNLESS OTHERWISE SPECIFIED:		PARTS LIST (PER ONE UNIT)	
mm		0 PLC	±	DOWN	12AUG2009
		1 PLC	±	CHK	V.GLUMM 12AUG2009
		2 PLC	±	CHK	H.Braun 12AUG2009
		3 PLC	±	APVD	T.Schnurpfel 12AUG2009
		4 PLC	±	PRODUCT SPEC	
		ANGLES	±0°	APPLICATION SPEC	
MATERIAL		FINISH		WEIGHT	
				SIZE	A3
				CAGE CODE	00779
				DRAWING NO	C=1102603
				RESTRICTED TO	
				CUSTOMER DRAWING	
				SCALE	1:1
				SHEET	1 OF 1
				REV	A4