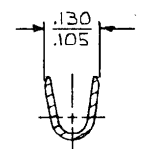
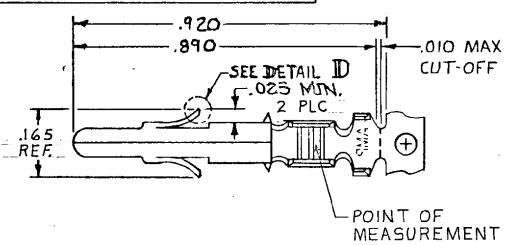
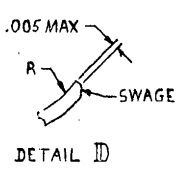


DRAWING MADE IN THIRD ANGLE PROJECTION

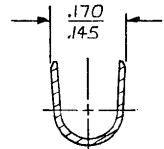
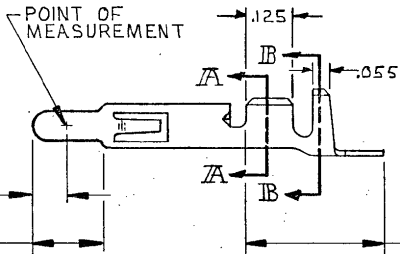
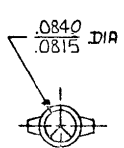
LOC CM DIST 53

© COPYRIGHT

REVISIONS						
P	F	ZONE	LTR	DESCRIPTION	DATE	APPROVED
		N1		REVISED PER ECO-11-005294	07APR11	HMR



SECTION A-A



SECTION B-B

.285 MIN LOCALIZED GOLD PLATE AREA

.360 MIN LOCALIZED TIN PLATE AREA

△ .000030 MIN GOLD AT POINT OF MEASUREMENT IN GOLD PLATE AREA; .000030 MIN TIN IN TIN PLATE AREA; .000050 NICKEL UNDERPLATE ON ENTIRE CONTACT.

	△	.012 BRASS	350654-7
350669-1	PRE-TIN	.012 BRASS	350654-1
LOOSE PIECE (REF)	FINISH	MATERIAL	PART NO

UNLESS OTHERWISE SPECIFIED DIMENSIONS ARE IN INCHES. TOLERANCES ON: DECIMALS ± .015 ANGLES ±	CONTRACT NO DR m. Fehrer 5-6-81
WIRE RANGE 20-14 AWG	CHK D. S. Heide 6/9/81
INSULATION RANGE .130 DIA MAX	APPD D. Heide 6/10/81
	DSGN APPD
	OTHER APPD

STE TE Connectivity		
NAME PIN, GROUNDING		
UNIVERSAL MATE-N-LOK		
SIZE B	CODE IDENT NO 00779	DRAWING NO 350654
SCALE NTS	SHEET #	

CUSTOMER DRAWING