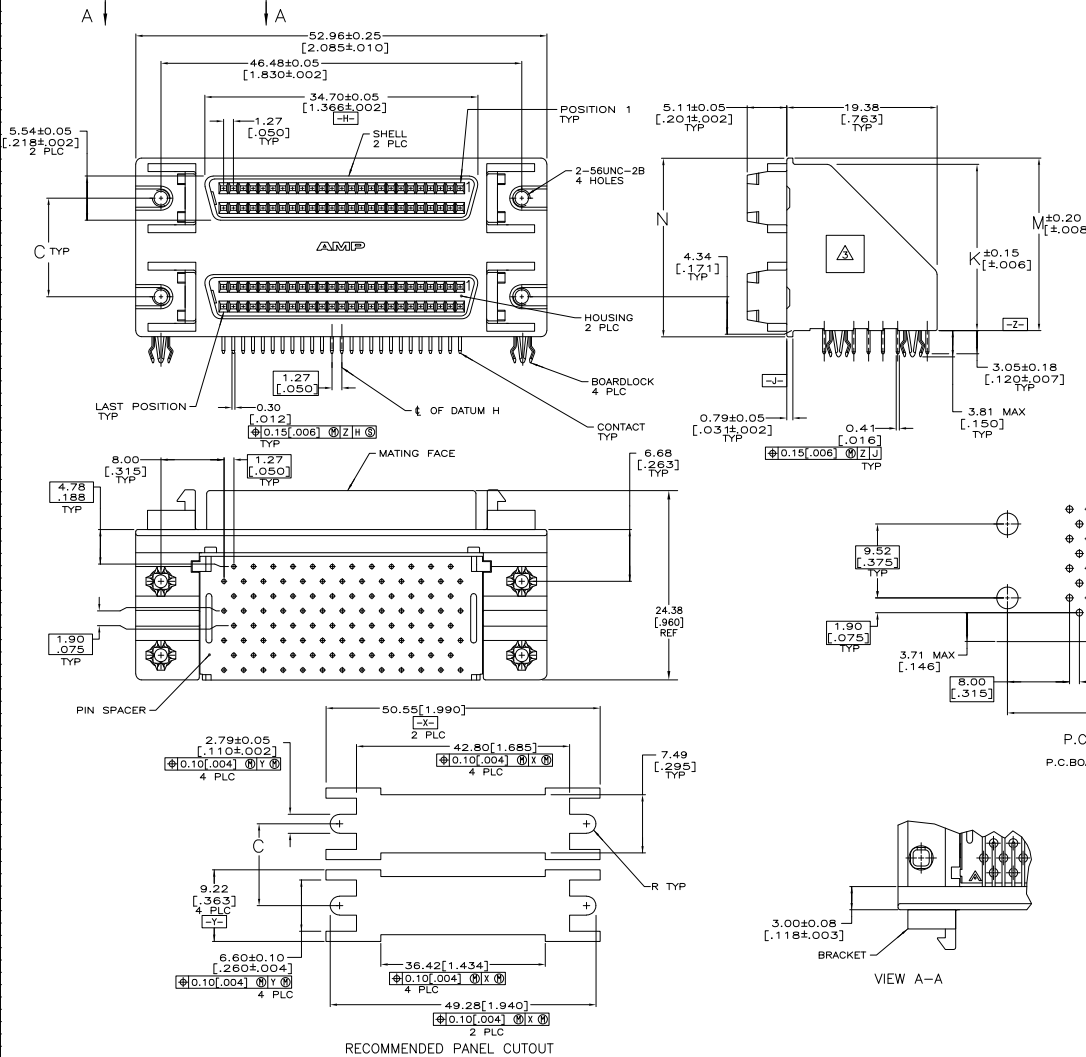
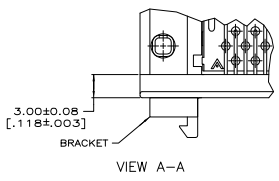
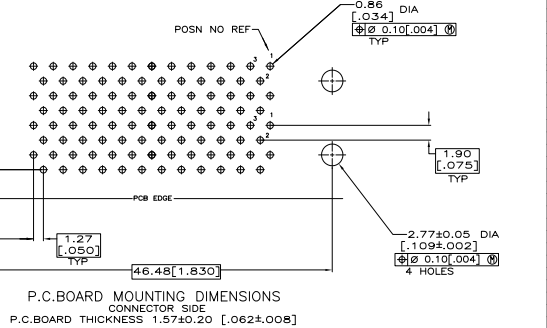


THIS DRAWING IS UNAPPROVED FOR REVISIONS
 UNLESS INDICATED OTHERWISE BY THE DRAWING ENGINEER

| REV | DATE | DESCRIPTION | BY | APP |
|-----|------|--------------------------|----|-----|
| 00 | | | | |
| F1 | | REVISED PER ECO-06-02004 | | |



CONTACTS: PHOSPHOR BRONZE; HOUSING AND PIN SPACER: UL 94V-0 RATED, POLYESTER, BLACK; BRACKET: ZINC; SHELL: CARBON STEEL; BOARDLOCKS: COPPER ALLOY.
 CONTACTS: 0.76mm [0.00030] MIN GOLD FOR A LENGTH OF 0.64 [0.025] MIN FROM MATING END, 3.81mm [0.00150] MIN TIN-LEAD ON OPPOSITE END FOR A LENGTH OF 3.23 [0.127] MIN, BOTH OVER 1.27mm [0.00050] MIN NICKEL.
 SHELLS: 5.08mm [0.00200] MIN TIN OVER 1.27mm [0.00050] MIN COPPER.
 BRACKET: 3.81mm [0.00150] MIN NICKEL OVER 5.08mm [0.00200] MIN COPPER.
 BOARDLOCKS: 5.08mm [0.00200] MIN TIN-LEAD OVER 1.27mm [0.00050] MIN NICKEL.
 0.5" X 0.5" ADHESIVE DATE CODE LABEL AFFIXED IN APPROX. AREA SHOWN OR ON OPPOSITE END OF PART.



| N | M | K | C | NO OF POSN | PART NUMBER |
|---------------|---------------|---------------|---------------|------------|-------------|
| 23.01 [0.906] | 22.20 [0.874] | 21.39 [0.842] | 12.70 [0.500] | 50 | 787656-1 |

| THIS DRAWING IS A CONTROLLED DOCUMENT | | REV | DATE | DESCRIPTION | BY | APP |
|---------------------------------------|-------------|-----------|------|-------------|----|-----|
| REVISIONS | DESCRIPTION | DATE | BY | APP | | |
| 1 | 108-1228 | 114-40029 | | | | |