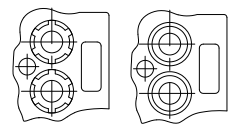
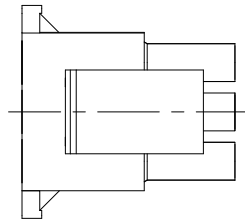
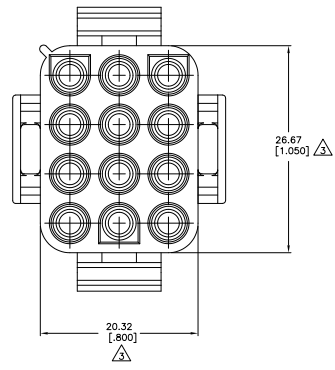
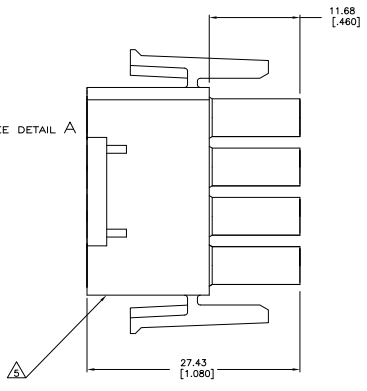
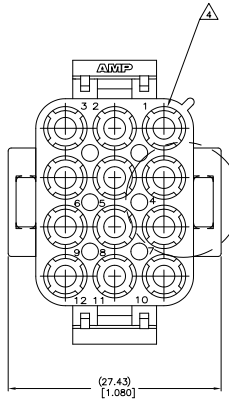
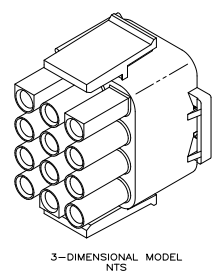


THIS DRAWING IS UNPUBLISHED
 ALL RIGHTS RESERVED

REV	DATE	DESCRIPTION	BY	CHK	APP
CM	00				
AP2		REVISED PER EDD-11-004587			



DETAIL A
 OPTIONAL CONSTRUCTION



- MATES WITH APPROPRIATE UNIVERSAL MATE-N-LOK™ CAP OR HEADER.
 - SMALL NICKS ARE PERMITTED ON THE CIRCUIT TOWERS WHICH COULD INCREASE THE INITIAL HOUSING MATING FORCE BY UP TO 4.4 NEWTONS [1.0 LBS]. NO INDIVIDUAL NICKED TOWER SHALL INCREASE THIS FORCE BY OVER 2.2 NEWTONS [.5 LBS].
- ⚠ DIMENSION INDICATED IS AS MOLDED. ADDITIONAL GROWTH DUE TO SUBSEQUENT MOISTURE ABSORPTION MAY OCCUR.
 - ⚠ FOUR RIBS EQUALLY SPACED, NO SPECIFIC ORIENTATION, NO RIBS OR SIX RIBS EQUALLY SPACED, NO SPECIFIC ORIENTATION, OPTIONAL.
 - ⚠ UNDERWRITERS RECOGNIZED COMPONENT LOGO AND CSA CERTIFICATION LOGO TO BE LOCATED ONCE EACH ON SIDE OF HOUSING.
 - ⚠ OBSOLETE PARTS: OBSOLETE CIS STREAMLINING PER D.RENAUD/D.SINISI

OBsolete	Color	Part No.
⚠	BLACK	1-480708-9
⚠	GREY	1-480708-8
⚠	BLUE	1-480708-6
⚠	GREEN	1-480708-5
⚠	YELLOW	1-480708-4
⚠	ORANGE	1-480708-3
⚠	RED	1-480708-2
⚠	BROWN	1-480708-1
⚠	NATURAL	1-480708-0
⚠	COLOR	PART NO.

⚠ SUPERSEDED BY 1-480708-0

THIS DRAWING IS A CONTROLLED DOCUMENT.

APPROVED FOR RELEASE	DATE	BY	REVISION

TE Connectivity
 PLUG, 12 CIRCUIT, UNIVERSAL MATE-N-LOK™
 SIZE: 4.1 DRAWING NO: A100779 G=480708
 CUSTOMER DRAWING



