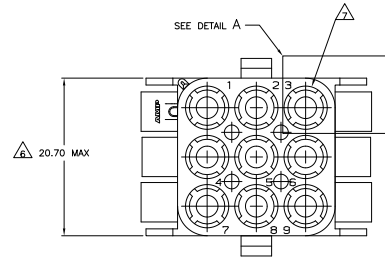
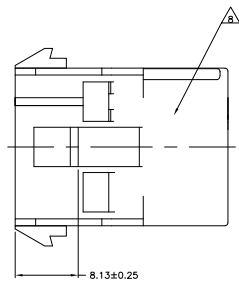
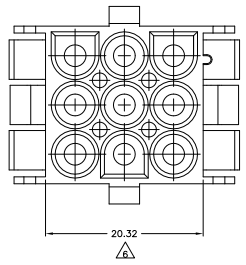
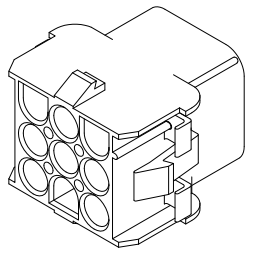
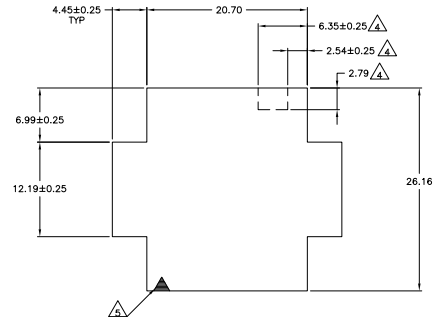
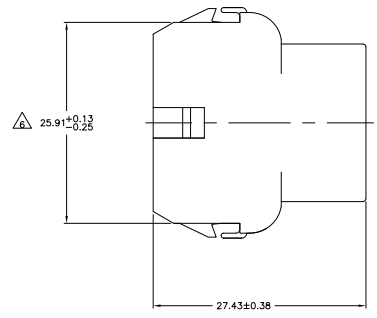
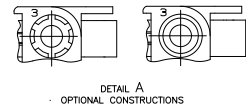


REV	DATE	DESCRIPTION	BY	CHK	APP
CM	00				
AK2		REVISED PER EDD-11-004587			11MM11 RK HMR



- MATES WITH APPROPRIATE UNIVERSAL MATE-N-LOK™ PLUG.
 - RECOMMENDED PANEL THICKNESS 0.76 - 2.29.
 - PANEL MUST BE PUNCHED SO THAT THE HOUSING ENTERS THE PANEL IN THE SAME DIRECTION AS THE PUNCH.
- ▲ OPTIONAL FOR KEYING HOUSING IN PANEL.
 - ▲ CIRCUIT NUMBER 1 LOCATION.
 - ▲ DIMENSION REPRESENTS POTENTIAL MAXIMUM GROWTH DUE TO MOISTURE ABSORPTION.
 - ▲ FOUR RIBS EQUALLY SPACED, NO SPECIFIC ORIENTATION. NO RIBS OR SIX RIBS EQUALLY SPACED, NO SPECIFIC ORIENTATION, OPTIONAL.
 - ▲ UNDERWRITERS RECOGNIZED COMPONENT LOGO AND CSA CERTIFICATION LOGO TO BE LOCATED ONCE EACH ON SIDE OF HOUSING.
 - ▲ OBSOLETE PARTS: OBSOLETE CIS STREAMLINING PER D.RENAUD/D.SINISI



3-DIMENSIONAL MODEL
 NTS

MM	IN	MM	IN
6.35	.250	-	-
4.45	.175	27.43	1.080
2.79	.110	26.43	1.041
2.54	.100	25.91	1.020
2.29	.090	20.70	.815
0.76	.030	20.32	.800
0.38	.015	12.19	.480
0.25	.010	8.13	.320
0.13	.005	6.99	.275
MM	IN	MM	IN

CONVERSION TABLE

Color	Part No.
BLACK	1-480707-9
GRAY	1-480707-8
BLUE	1-480707-6
GREEN	1-480707-5
YELLOW	1-480707-4
ORANGE	1-480707-3
RED	1-480707-2
BROWN	1-480707-1
NATURAL	1-480707-0
COLOR	PART NO

THIS DRAWING IS A CONTROLLED DOCUMENT.

TE Connectivity

UNIVERSAL MATE-N-LOK™

9 CIRCUIT

100779 G-480707

CUSTOMER DRAWING

REV: 4.1

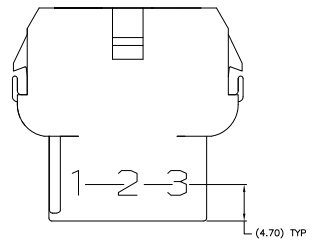
1 of 2

AK2

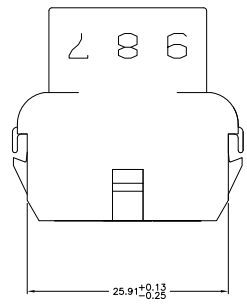
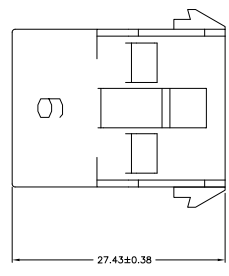
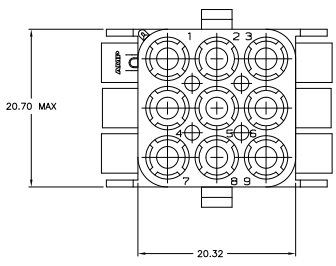
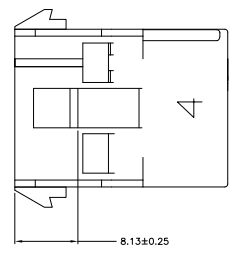


THIS DRAWING IS UNPUBLISHED
 ALL RIGHTS RESERVED

REV	DATE	DESCRIPTION	BY	APP
00		SEE SHEET 1		



1. STAMP NUMBERS 3.18 HIGH AT WIRE END OF HOUSING (12 POINT DAVID TYPE); CLARIFICATION MARKS UNDER THE 6 & 9.
2. CHARACTERS TO BE STAMPED ON HOUSING IN A MANNER AS TO BE READ FROM WIRE END ONLY.
3. VIOLET, BLACK, BROWN, AND BLUE COLORED BLOCKS TO BE STAMPED WITH WHITE CHARACTERS; ALL OTHER COLORED BLOCKS TO BE STAMPED WITH BLACK CHARACTERS.



MM	IN	MM	IN
5.08	.200	-	-
4.70	.185	27.43	1.080
3.18	.125	25.91	1.020
0.38	.015	20.70	.815
0.25	.010	20.32	.800
0.13	.005	8.13	.320

CONVERSION TABLE



THIS DRAWING IS A CONTROLLED DOCUMENT.		APPROVED BY: BLANKEN	DATE: 06/20/00
DESIGNED BY: STIGALL	DATE: 06/20/00	APPROVED BY: STIGALL	DATE: 06/20/00
DRAWING NO: 480707-0		CUSTOMER DRAWING	
REV: 1		DATE: 06/20/00	
BY: STIGALL		DATE: 06/20/00	
CHECKED BY: STIGALL		DATE: 06/20/00	
DRAWING NO: 480707-0		CUSTOMER DRAWING	
REV: 1		DATE: 06/20/00	
BY: STIGALL		DATE: 06/20/00	
CHECKED BY: STIGALL		DATE: 06/20/00	

NATURAL	2-480707-0
COLOR	PART NO

TE Connectivity
 CAP. 9 CIRCUIT
 UNIVERSAL MATE-IN-LOK(TM)
 A100779G-480707
 SIZE 4.1 SHEET 2 OF 2 REV AK2