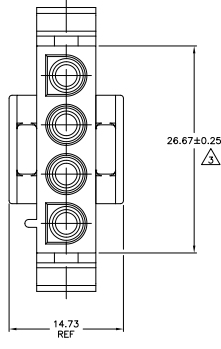
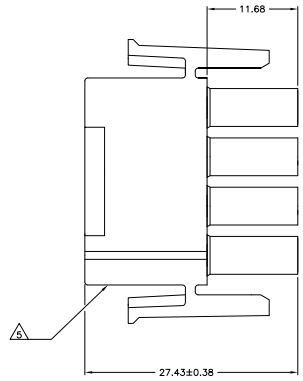
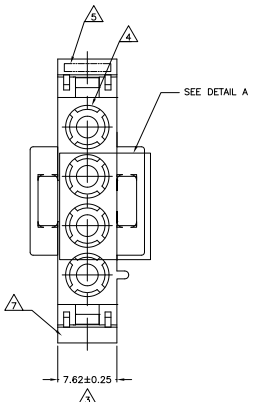
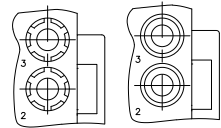
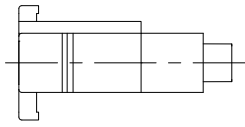


THIS DRAWING IS UNPUBLISHED  
 ALL RIGHTS RESERVED

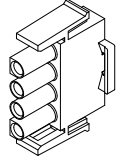
REV	DATE	DESCRIPTION	BY	CHK	APP
0					
1		REVISED PER EDD-11-004587	11MMR11	RK	HMR



- NOTES:
- MATES WITH APPROPRIATE UNIVERSAL MATE-N-LOK™ CAP OR HEADER.
  - SMALL NICKS ARE PERMITTED ON THE CIRCUIT TOWERS WHICH COULD INCREASE THE INITIAL HOUSING MATING FORCE BY UP TO 4.4 NEWTONS [1.0 LBS]. NO INDIVIDUAL NICKED TOWER SHALL INCREASE THIS FORCE BY OVER 2.2 NEWTONS [.5 LBS].
- ⚠ DIMENSION INDICATED IS AS MOLDED. ADDITIONAL GROWTH DUE TO SUBSEQUENT MOISTURE ABSORPTION MAY OCCUR.
  - ⚠ FOUR RIBS EQUALLY SPACED. NO SPECIFIC ORIENTATION, NO RIBS OR SIX RIBS EQUALLY SPACED. NO SPECIFIC ORIENTATION, OPTIONAL.
  - ⚠ UNDERWRITERS RECOGNIZED COMPONENT LOGO AND CSA CERTIFICATION LOGO TO BE LOCATED ONCE EACH ON SIDE OF HOUSING.
  - ⚠ TRADEMARK LOCATION (AMP OR TE CONNECTIVITY).
  - ⚠ MANUFACTURING LOCATION ID (OPTIONAL).
  - ⚠ OBSOLETE PARTS: OBSOLETE CIS STREAMLINING PER D.RENAUD/D.SINISI



DETAIL A  
 OPTIONAL CONSTRUCTION



3-DIMENSIONAL MODEL  
 NTS

MM	IN
27.43	1.080
26.67	1.050
14.73	.580
11.68	.460
7.62	.300
0.38	.015
0.25	.010
0.13	.005

BLACK	1-480702-9
GRAY	1-480702-8
BLUE	1-480702-6
GREEN	1-480702-5
YELLOW	1-480702-4
ORANGE	1-480702-3
RED	1-480702-2
BROWN	1-480702-1
NATURAL	1-480702-0

⚠ OBSOLETE

⚠ SUPERSEDED BY 1-480700-0

⚠ OBSOLETE

THIS DRAWING IS A CONTROLLED DOCUMENT.

TE Connectivity

PLUG, 4 CIRCUIT, UNIVERSAL MATE-N-LOK(TM)

DATE: 00779 DATE: 0480702

CUSTOMER DRAWING

REV: 4.1 SHEET: 1 OF 2



