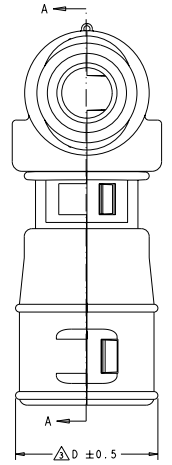
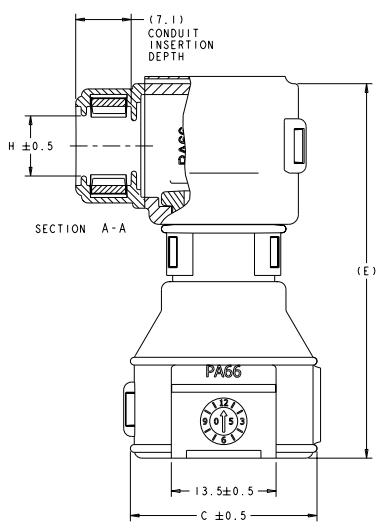
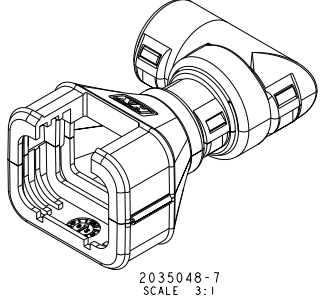
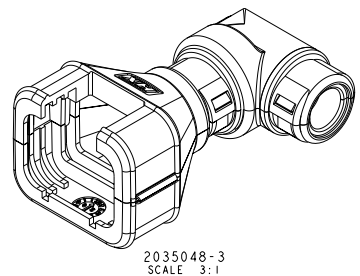
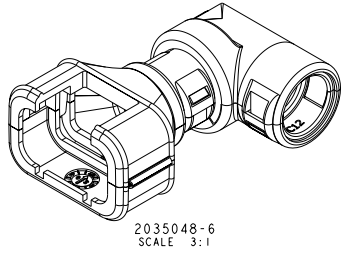
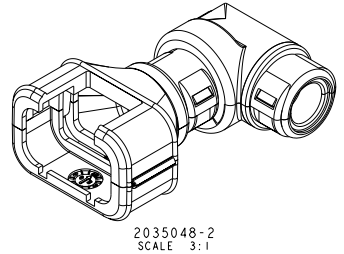
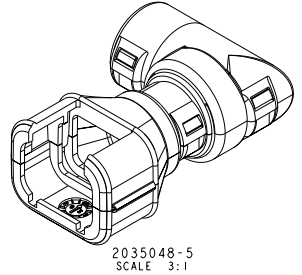
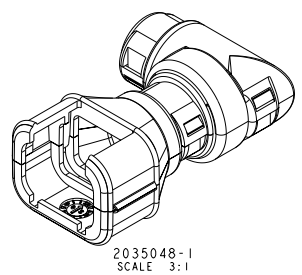


8	7	6	5	4	3	2	1
DATE REVISION TO IMPLEMENTED	REVISIONS FOR PUBLICIZATION						
00	00						

REV	FX	LN	DESCRIPTION	DATE	BY	CHK
B			REVISED PER ECO-09-000390		DD	RB
C			REVISED PER ECO-11-017736		DD	RB



△ BACKSHELL IS NOT CURRENTLY TOOLED FOR PRODUCTION.
 2. ELBOW DESIGN ALLOWS FOR 360° EXIT ROTATION.
 △ DIMENSION TO BE MEASURED WHEN THE COVER IS CLOSED.

TE PART NUMBER	ASSY POSN	NOMINAL CONDUIT SIZE		NOMINAL DIMENSIONS			
		NC	NW	C	D	(E)	H
2035048-1	2	08	7.5	23.9	18.3	48.3	7.8
2035048-2	3	08	7.5	28.5	18.3	48.3	7.8
2035048-3	4	08	7.5	29.1	23.6	52.3	7.8
2035048-4	6	△ NOT CURRENTLY TOOLED					
2035048-5	2	12	10	23.9	18.3	48.3	11.0
2035048-6	3	12	10	28.5	18.3	48.3	11.0
2035048-7	4	12	10	29.1	23.6	52.3	11.0
2035048-8	6	△ NOT CURRENTLY TOOLED					
2035048-9	8	△ NOT CURRENTLY TOOLED					

THIS DRAWING IS A CONTROLLED DOCUMENT.

DATE: 02/20/2008
 BY: MARELY
 CHECKED BY: MARELY
 APPROVED BY: MARELY

TE Connectivity
AMPSEAL 16, 90 DEGREE EXIT

WILSON 616
 CUSTOMER DRAWING

SIZE: A
 SCALE CODE: 3:1
 DRAWING NO: 00779 ©-2035048
 SHEETS: 1 OF 1