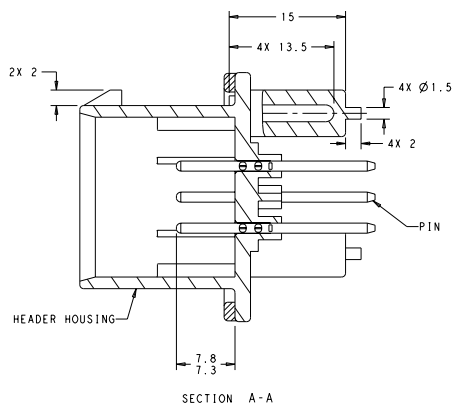
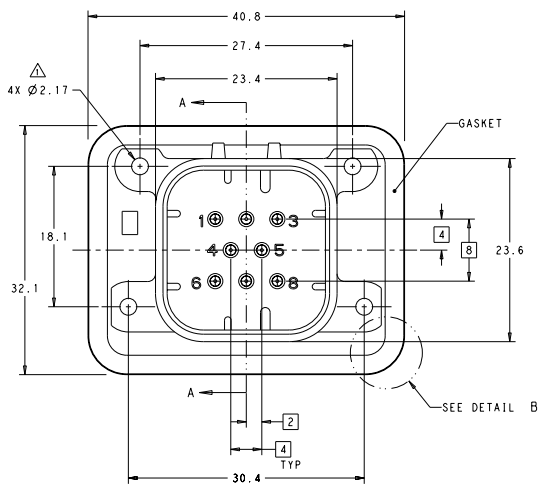
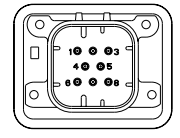
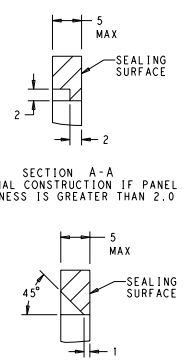
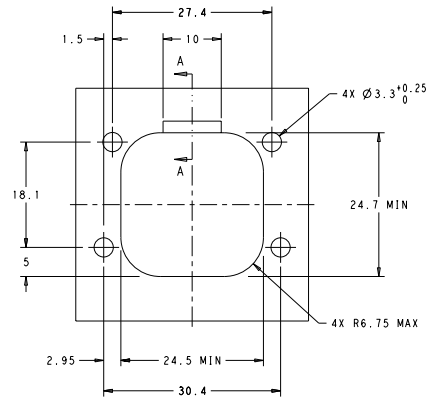
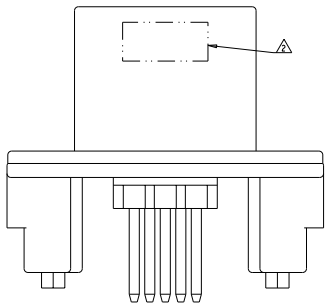
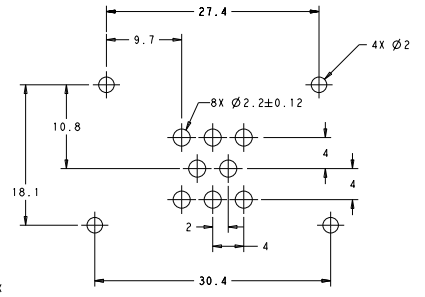


DATE REVISIONS TO IMPROVEMENTS RECEIVED FOR PUBLICATION ALL RIGHTS RESERVED

REV	DATE	DESCRIPTION	BY	CHK	APP
B3		REVISED PER ECO-11-005030			

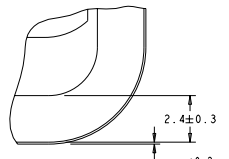


- △ ACCEPTS #4 SELF TAPPING THREAD CUTTING SCREWS OR METRIC EQUIVALENT. DRIVE TO 0.6 N-m MAX
 - △ DATE CODE IN THIS LOCATION USING 5 DIGIT CODE FIRST 2 DIGITS = YEAR, SECOND 2 DIGITS = WEEK, LAST DIGIT = DAY.
 - △ MATERIALS: GASKET - SILICONE
HEADER HOUSING - GLASS FILLED PBT
PINS - TIN OR GOLD PLATED BRASS
 - △ HOUSING COLORS ARE MECHANICALLY KEYS TO MATE ONLY WITH IDENTICALLY COLORED PLUG ASSEMBLIES.
5. HEADER MATES TO PLUG ASSEMBLY 776286 WHICH USES REELED TERMINAL 770520 OR LOOSE PIECE TERMINAL 770854



776276-2 & 1-776276-2
KEY LOCATION
SCALE 2:1
776276-1 & 1-776276-1 SHOWN

NATURAL	DURAGOLD	1-776276-2
BLACK	DURAGOLD	1-776276-1
NATURAL	TIN	776276-2
BLACK	TIN	776276-1



DETAIL B
SCALE 10:1

THIS DRAWING IS A CONTROLLED DOCUMENT. DATE: 11/20/05 BY: JAR/2015

DESIGNED BY: JAR/2015 CHECKED BY: JAR/2015

DATE: 11/20/05

PROJECT CODE: 100-1329

REV: 1

116-18816

SCALE CODE: DRAWING NO. 00779-776276

CUSTOMER DRAWING

TE Connectivity

ASSEMBLY: HEADER, 8 POSITION, VERTICAL, AMPSEAL WITH FLANGE SEAL

REVISIONS TO: 1

PAGE 4:1 OF 1