

4

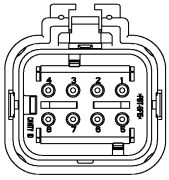
3

2

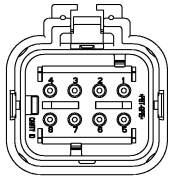
1

THIS DRAWING IS UNPUBLISHED. RELEASED FOR PUBLICATION. ALL RIGHTS RESERVED.

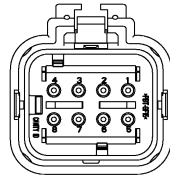
LOC	DISP	REV	DESCRIPTION	DATE	BY	CHKD
GE	00	01	REVISED PER ECO-11-005294	29APR11	RK	HMR



776532-2
(GRAY TPA)
SCALE 2:1

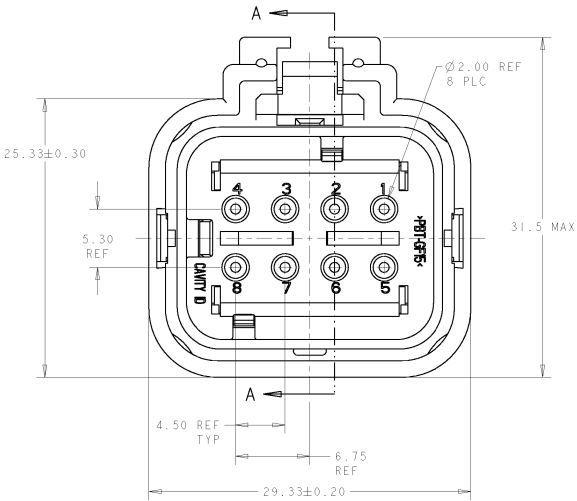


776532-3
(YELLOW TPA)
SCALE 2:1

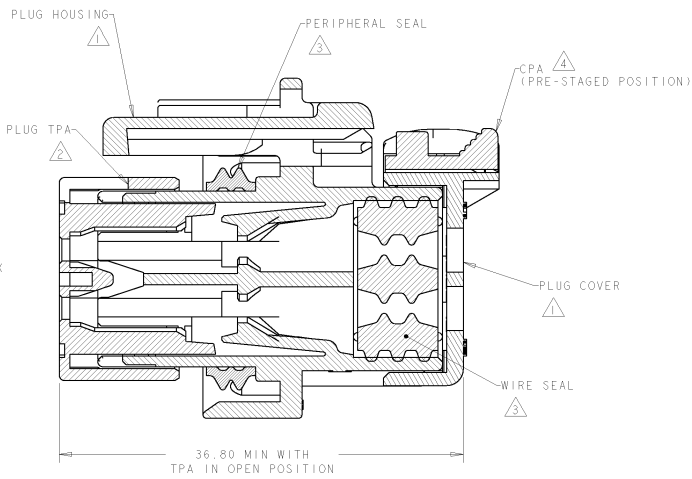


776532-4
(GREEN TPA)
SCALE 2:1

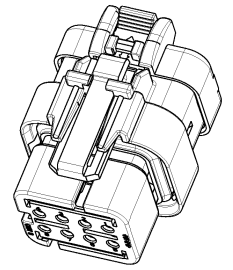
- △ MATERIAL: 15% GLASS FILLED THERMOPLASTIC
COLOR: BLACK
 - △ MATERIAL: 15% GLASS FILLED THERMOPLASTIC
COLOR: (SEE TABLE)
 - △ MATERIAL: SILICONE
COLOR: ORANGE
 - △ MATERIAL: 15% GLASS FILLED THERMOPLASTIC
COLOR: RED
5. RECOMMENDED WIRE DIAMETER RANGE IS 1.30 TO 2.54mm.



776532-1 SHOWN



SECTION A-A



SCALE 2:1

GREEN	776532-4
YELLOW	776532-3
GRAY	776532-2
RED	776532-1
TPA COLOR	PART NUMBER

DIMENSIONS: mm		DWG: B. SIMPSON 05NOV2002 CHK: D. KLEIN 05NOV2002 APP: D. KLEIN 05NOV2002		TE Connectivity PLUG ASSEMBLY, 8 POSITION, DUAL ROW, REDUCED DIA WIRE SEAL, AMPSEAL 16	
MATERIAL: - FINISH: -		APPLICATION SPEC: 114-13065 WEIGHT: - CUSTOMER DRAWING		SIZE: A2 CASE CODE: 100779 DRAWING NO: 776532 RESTRICTED TO: - SCALE: 4:1 SHEET 1 OF 1 REV D1	