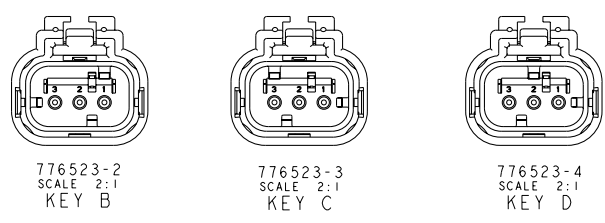
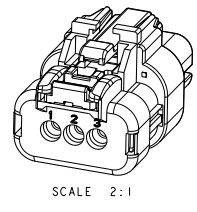
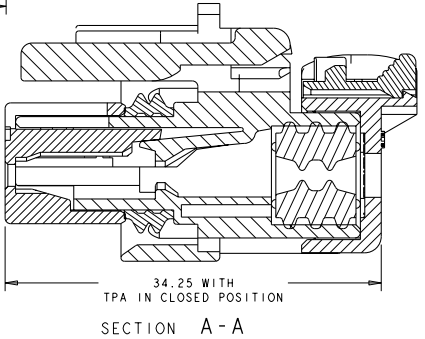
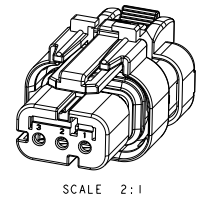
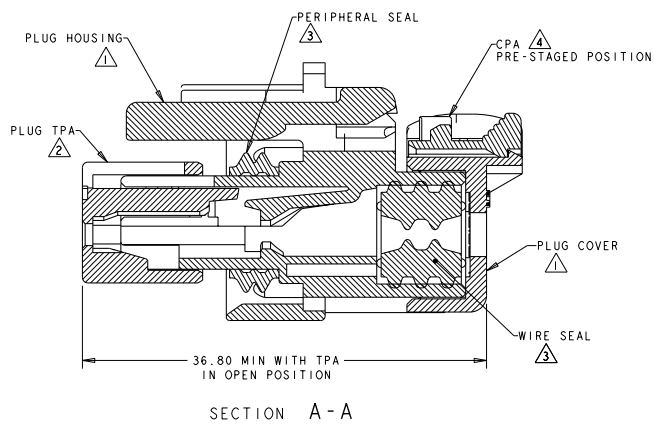
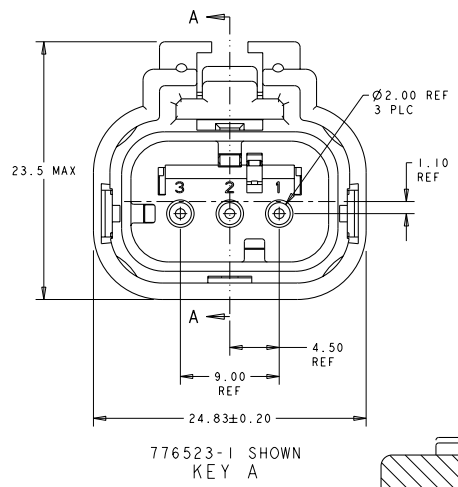


LOC	DISP	REVISIONS			
P	LY	DESCRIPTION	DATE	BY	APPR
GE	00				
	D2	REVISED PER ECO-11-005030	12MAR2011	AK	HMA



- △ MATERIAL: 15% GLASS FILLED THERMOPLASTIC  
COLOR: BLACK
  - △ MATERIAL: 15% GLASS FILLED THERMOPLASTIC  
COLOR: (SEE TABLE)
  - △ MATERIAL: SILICONE  
COLOR: ORANGE
  - △ MATERIAL: 15% GLASS FILLED THERMOPLASTIC  
COLOR: RED
5. RECOMMENDED WIRE DIAMETER RANGE IS 1.30 TO 2.54mm.



D	GREEN	776523-4
C	YELLOW	776523-3
B	GRAY	776523-2
A	RED	776523-1
KEY	TPA COLOR	PART NUMBER

THIS DRAWING IS A CONTROLLED DOCUMENT. DWG: A.J. GRAEF 22FEB00  
 CHK: R. GREINER 11DEC01  
 APPR: M. TRULL 11DEC01

TE Connectivity

PLUG ASSEMBLY,  
 3 POSITION, SINGLE ROW  
 REDUCED DIA WIRE SEAL, AMPSEAL 16

PRODUCT SPEC: 108-2184  
 APPLICATION SPEC: 114-13065  
 WEIGHT: 10±1g  
 MATERIAL: -  
 FINISH: -

SHEET: A200779 CASE CODE: - DRAWING NO: 776523  
 SCALE: 4:1 SHEET 1 OF 1 REV D2