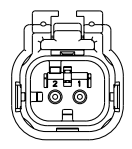
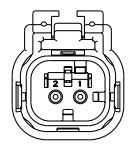


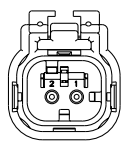
LOC		DISP		REVISIONS			
GE	00	P	LY	DESCRIPTION	DATE	BY	APPR
		DZ		REVISED PER ECO-11-005030	11MAR2011	AK	HMR



776522-2
SCALE 2:1
KEY B

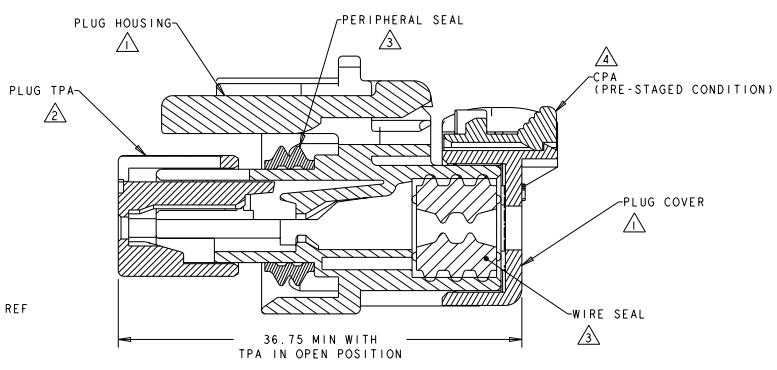
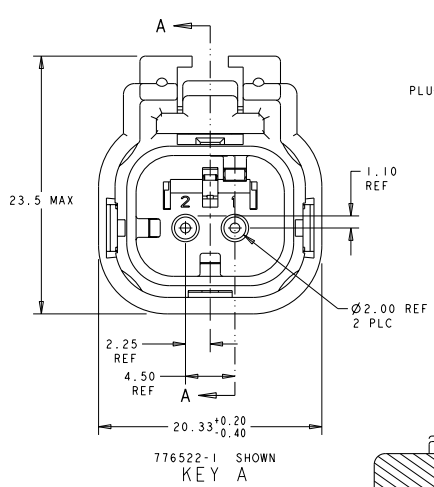


776522-3
SCALE 2:1
KEY C

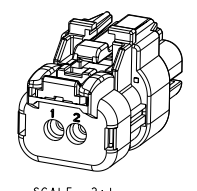
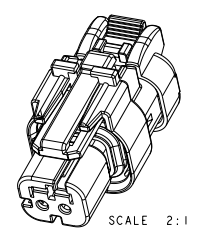
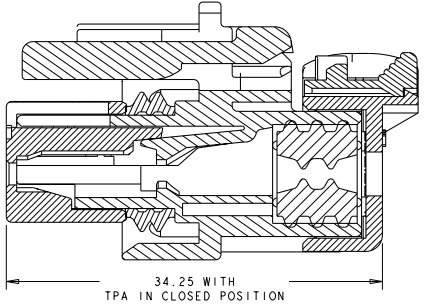


776522-4
SCALE 2:1
KEY D

- △ MATERIAL: 15% GLASS FILLED THERMOPLASTIC
COLOR: BLACK
 - △ MATERIAL: 15% GLASS FILLED THERMOPLASTIC
COLOR: (SEE TABLE)
 - △ MATERIAL: SILICONE
COLOR: LIGHT BLUE
 - △ MATERIAL: 15% GLASS FILLED THERMOPLASTIC
COLOR: RED
5. RECOMMENDED WIRE DIAMETER RANGE IS 1.30 TO 2.54mm.



SECTION A-A



KEY	TPA COLOR	PART NUMBER
D	GREEN	776522-4
C	YELLOW	776522-3
B	GRAY	776522-2
A	RED	776522-1

THIS DRAWING IS A CONTROLLED DOCUMENT. DWG: A.J. GRAEF 22FEB00
CHK: R. GREINER 11DEC01
APP: M. TRULL 11DEC01

TE Connectivity

PLUG ASSEMBLY,
2 POSITION, SINGLE ROW
REDUCED DIA WIRE SEAL, AMPSEAL 16

DIMENSIONS:	mm	0 PLC	±0.15	1 PLC	±0.15	2 PLC	±0.15	3 PLC	±0.15	4 PLC	±0.15	ANGLES	±0.15	FINISH	
-------------	----	-------	-------	-------	-------	-------	-------	-------	-------	-------	-------	--------	-------	--------	--

PRODUCT SPEC: 108-2184
APPLICATION SPEC: 114-13065
WEIGHT: 8±1g
CUSTOMER DRAWING

SHEET: A200779
CASE CODE: 776522
DRAWING NO: 776522
SCALE: 4:1
SHEET: 1 OF 1
REV: D2