

4

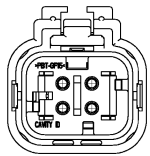
3

2

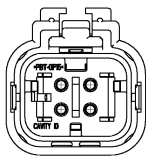
1

THIS DRAWING IS UNPUBLISHED. RELEASED FOR PUBLICATION BY: BY: ALL RIGHTS RESERVED.

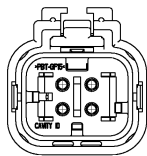
| LOC | DISP | REV | DESCRIPTION | DATE | BY | CHKD |
|-----|------|-----|---------------------------|---------|----|------|
| GE | 00 | 1 | REVISED PER ECO-11-009294 | 30APR11 | RK | HMR |



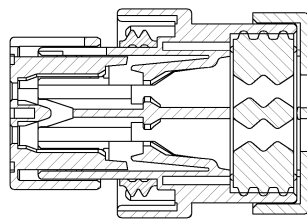
776487-2
SCALE: 2:1



776487-3
SCALE: 2:1

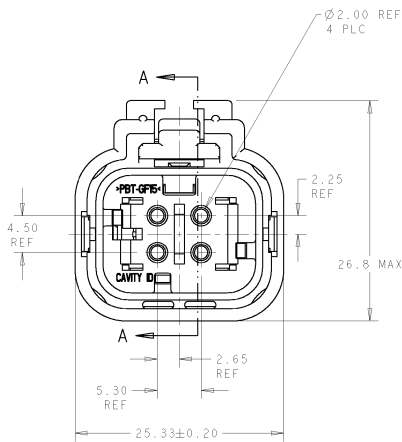


776487-4
SCALE: 2:1

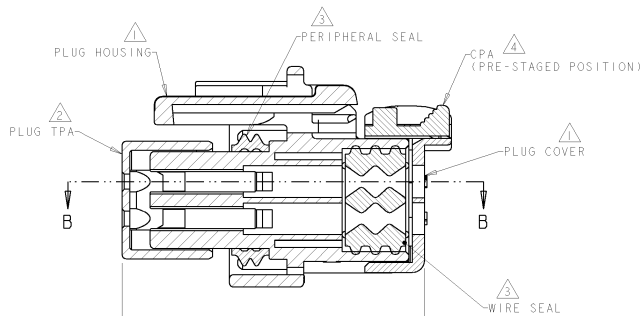


SECTION B-B

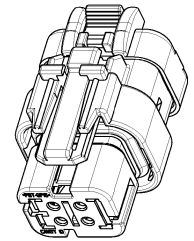
- 1 MATERIAL: 15% GLASS FILLED THERMOPLASTIC
COLOR: BLACK
- 2 MATERIAL: 15% GLASS FILLED THERMOPLASTIC
COLOR: (SEE TABLE)
- 3 MATERIAL: SILICONE
COLOR: YELLOW
- 4 MATERIAL: 15% GLASS FILLED THERMOPLASTIC
COLOR: RED
- 5. RECOMMENDED WIRE DIAMETER RANGE IS 2.18 TO 3.67mm



776487-1 SHOWN



SECTION A-A



SCALE: 2:1

| | |
|-----------|-------------|
| GREEN | 776487-4 |
| YELLOW | 776487-3 |
| GRAY | 776487-2 |
| RED | 776487-1 |
| TPA COLOR | PART NUMBER |

| | | | | | |
|-------------------|--|----------------------|------------------|---|---------------|
| DIMENSIONS: mm | | APPROVED BY: DATE | DATE | TE Connectivity | |
| DRAWN BY: DATE | | DATE | DATE | PLUG ASSEMBLY, 4 POSITION, DUAL ROW, AMPSEAL 16 | |
| MATERIAL | | PRODUCT SPEC | APPLICATION SPEC | SIZE | RESTRICTED TO |
| FINISH | | 114-13065 | A2100779 | 776487 | REV D1 |
| CUSTOMER DRAWING | | SCALE: 3:1 | | SHEET 1 OF 1 | |

776487

A