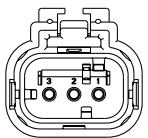
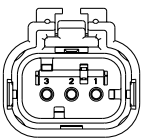


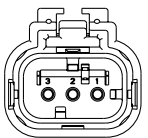
THIS DRAWING IS UNPUBLISHED. RELEASED FOR PUBLICATION. ALL RIGHTS RESERVED.



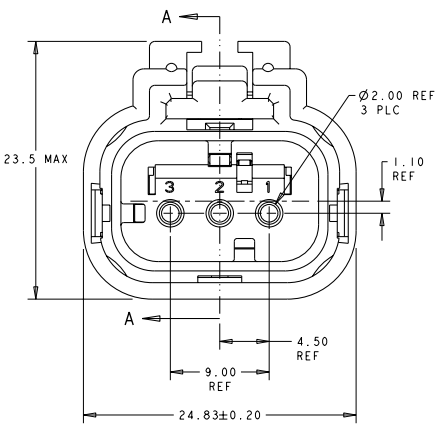
776429-2
SCALE 2:1
KEY B



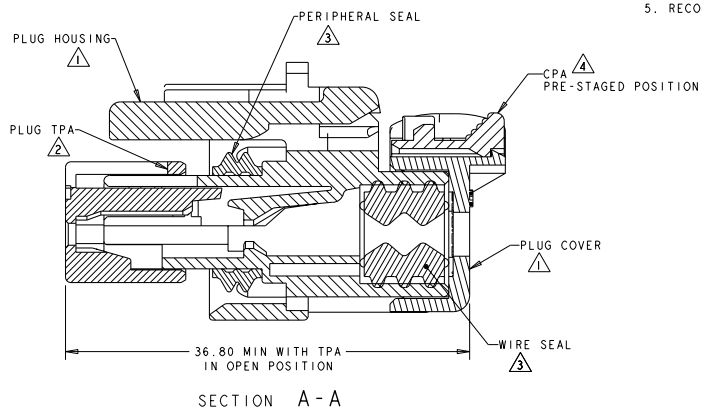
776429-3
SCALE 2:1
KEY C



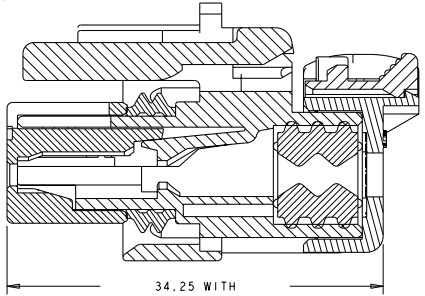
776429-4
SCALE 2:1
KEY D



776429-1 SHOWN
KEY A



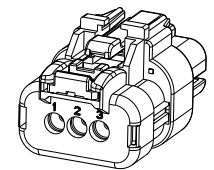
SECTION A-A



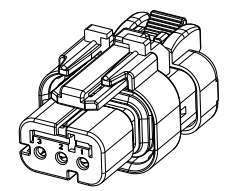
SECTION A-A

LOC		DISP		REVISIONS			
GE	00	P	LY	DESCRIPTION	DATE	BY	APPR
		E2		REVISED PER ECO-11-005030	11MAR2011	AK	HMR

- ⚠ MATERIAL: 15% GLASS FILLED THERMOPLASTIC
COLOR: BLACK
 - ⚠ MATERIAL: 15% GLASS FILLED THERMOPLASTIC
COLOR: (SEE TABLE)
 - ⚠ MATERIAL: SILICONE
COLOR: YELLOW
 - ⚠ MATERIAL: 15% GLASS FILLED THERMOPLASTIC
COLOR: RED
5. RECOMMENDED WIRE DIAMETER RANGE IS 2.18 TO 3.67mm.



SCALE 2:1



SCALE 2:1

D	GREEN	776429-4
C	YELLOW	776429-3
B	GRAY	776429-2
A	RED	776429-1
KEY	TPA COLOR	PART NUMBER

THIS DRAWING IS A CONTROLLED DOCUMENT. DWG: A.J. GRAEF 22FEB00
CHK: R. GREINER 11DEC01
APPD: M. TRULL 11DEC01

TE Connectivity
PLUG ASSEMBLY, 3 POSITION, SINGLE ROW AMPSEAL 16

DIMENSIONS: mm	TO DIMENSIONS AND TOLERANCES SPECIFIED	PRODUCT SPEC: 108-2184	APPLICATION SPEC: 114-13065	WEIGHT: 10±1g	SHEET: A200779	CASE CODE: C-776429	RESTRICTED TO: -
MATERIAL: -				FINISH: -		CUSTOMER DRAWING	

SCALE 4:1 SHEET 1 OF 1 REV E2