

4

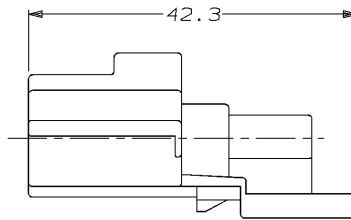
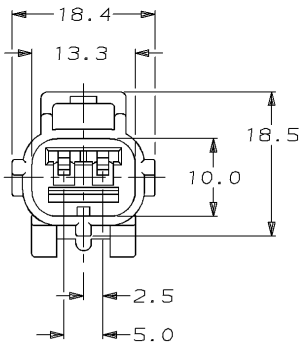
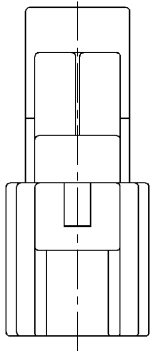
3

2

1

THIS DRAWING IS UNPUBLISHED. RELEASED FOR PUBLICATION , 19
 © COPYRIGHT 19 BY AMP INCORPORATED. ALL RIGHTS RESERVED.

| LOC | | DST | | REVISIONS | | | |
|-----|-----|---------------------------|----------|-----------|------|--|--|
| P | LTR | DESCRIPTION | DATE | DWN | APVD | | |
| 0 | | INITIAL RELEASE | 02/14/96 | KW | JK | | |
| A | | REV PER ECN #OKSO-0014-96 | 09/20/96 | KW | JK | | |



184163-1
 PART NUMBER

| | | | | | | | | |
|--|--|--|-----------|-----------------------|--|-------------------------------|-----------|------------|
| <small>THIS DRAWING IS A CONTROLLED DOCUMENT FOR AMP INCORPORATED. IT IS SUBJECT TO CHANGE AND THE CONTROLLING ENGINEERING ORGANIZATION SHOULD BE CONTACTED FOR THE LATEST REVISION.</small> | | DWN | K. WISE | 02/14/96 | | AMP Incorporated | | |
| DIMENSIONS: | | CHK | J. KUNKLE | 03/08/96 | | Harrisburg, PA 17105-3608 | | |
| mm | | APVD | J. KUNKLE | 03/08/96 | | CAP HSG, SSC, 2 POSN A KEY | | |
| | | TOLERANCES UNLESS OTHERWISE SPECIFIED: | | NAME | | SIZE | CAGE CODE | DRAWING NO |
| 0 PLC ±- | | 0 PLC ±- | | PRODUCT SPEC | | A3 | 00779 | ©-184163 |
| 1 PLC ±0.3 | | 1 PLC ±0.3 | | APPLICATION SPEC | | WEIGHT | | |
| 2 PLC ±- | | 2 PLC ±- | | - | | CUSTOMER DRAWING | | |
| 3 PLC ±- | | 3 PLC ±- | | - | | SCALE | | |
| 4 PLC ±- | | 4 PLC ±- | | - | | 2:1 | | |
| ANGLES | | ANGLES | | - | | SHEET | | |
| FINISH | | FINISH | | BLACK | | 1 OF 1 | | |
| MATERIAL | | MATERIAL | | PBT, 15% GLASS FILLED | | REV | | |
| | | | | | | A | | |

AMP1470-19 REV 10/93

20 SEP 1996 14:36:30 AMP33084:US128A>DEPT1135-U, SENSOR>U, 2POSN>U, ENDCAP>U, REV