

4

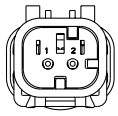
3

2

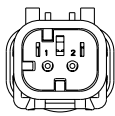
1

THIS DRAWING IS UNPUBLISHED. RELEASED FOR PUBLICATION. ALL RIGHTS RESERVED.

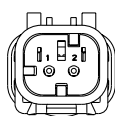
LOC	DISP	REVISIONS					
GE	00	P	LY	DESCRIPTION	DATE	BY	APPD
		CS		REVISED PER ECO-11-005030	12MAR2011	AK	HMR



776534-2
SCALE 2:1
KEY B



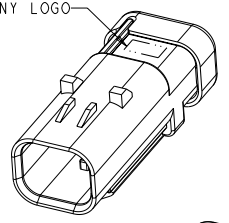
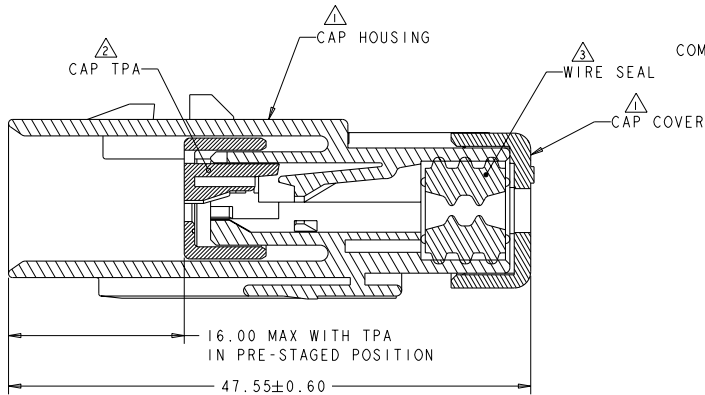
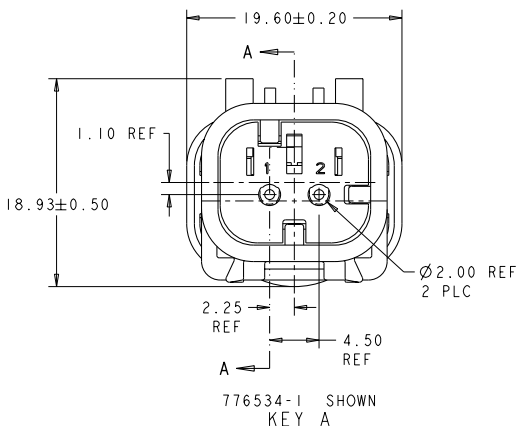
776534-3
SCALE 2:1
KEY C



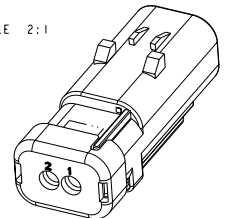
776534-4
SCALE 2:1
KEY D

- 1 MATERIAL: 15X GLASS FILLED THERMOPLASTIC
COLOR: BLACK
- 2 MATERIAL: 15X GLASS FILLED THERMOPLASTIC
COLOR: (SEE TABLE)
- 3 MATERIAL: SILICONE
COLOR: LIGHT BLUE

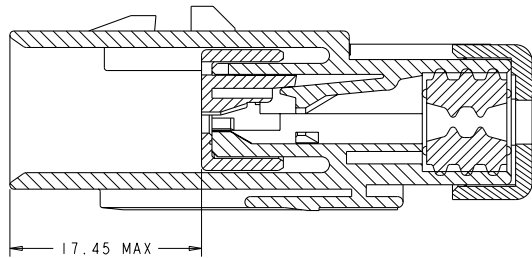
4. RECOMMENDED WIRE DIAMETER RANGE IS 1.30 TO 2.54mm



SCALE 2:1



SCALE 2:1



D	GREEN	776534-4
C	YELLOW	776534-3
B	GRAY	776534-2
A	RED	776534-1
KEY	TPA COLOR	PART NUMBER

THIS DRAWING IS A CONTROLLED DOCUMENT. DWG BY PETERSON 22FEB00
CHKD BY GREINER 11DEC01
APPD BY TRULL 11DEC01

TE Connectivity

CAP ASSEMBLY,
2 POSITION, SINGLE ROW,
REDUCED DIA WIRE SEAL, AMPSEAL 16

108-2184
114-13065

WEIGHT 9±1g
CUSTOMER DRAWING

SHEET 1 OF 1
SCALE 4:1
REV C5