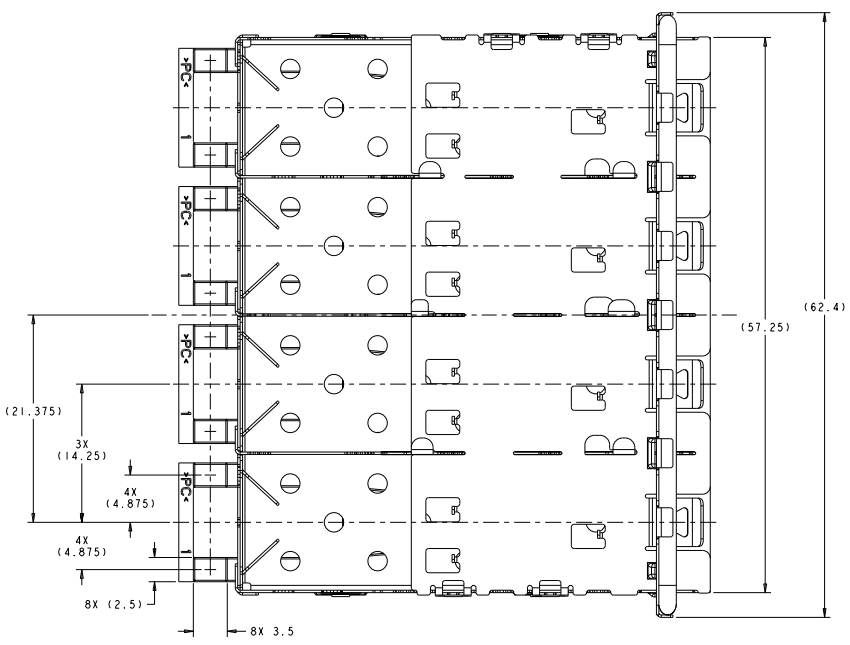
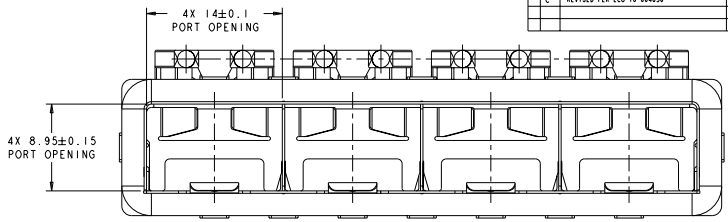
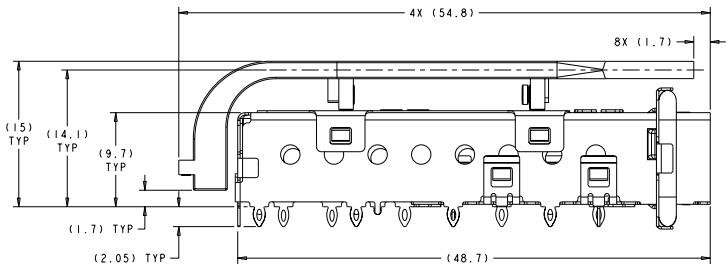
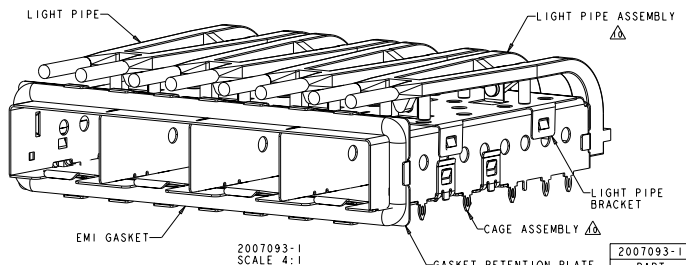


| REV | DATE | DESCRIPTION | BY | CHK | APP |
|-----|------|----------------------------|---------|-----|-----|
| B | | RELEASED PER ECO-09-022874 | DACTH00 | ZMR | MRS |
| C | | REVISED PER ECO-10-004036 | DACTH00 | CJV | MRS |



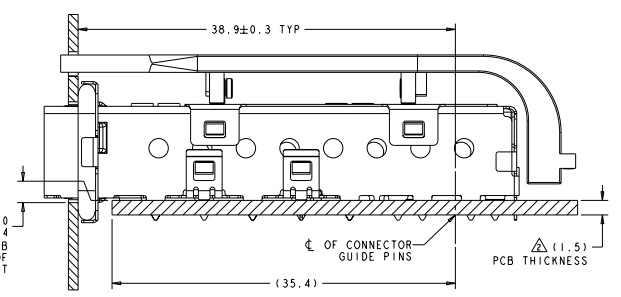
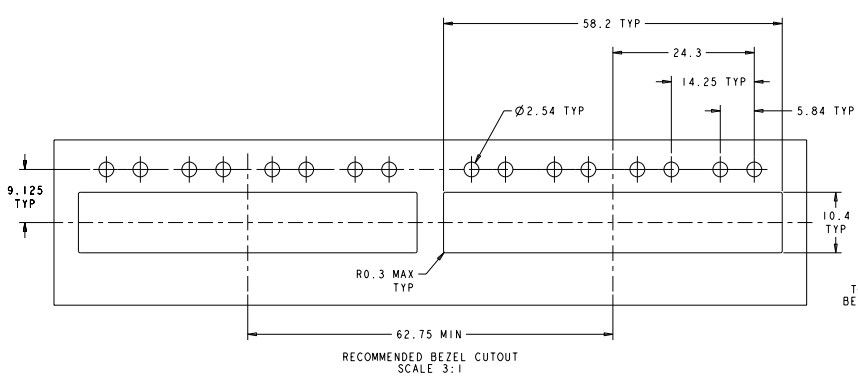
- △ MATERIAL:
 CAGE ASSEMBLY - 0.25mm THICK NICKEL SILVER ALLOY
 GASKET RETENTION PLATE - STAINLESS STEEL
 GASKET - PLATED FILLED SILICONE
 LIGHT PIPE BRACKET - STAINLESS STEEL
 LIGHT PIPE - POLYCARBONATE, CLEAR
- △ MINIMUM PC BOARD THICKNESS = 1.50mm.
- △ PADS AND VIAS CHASSIS GROUND.
- △ DATUM AND BASIC DIMENSION ESTABLISHED BY CUSTOMER.
- 5. MATES WITH SFP MSA COMPLIANT TRANSCEIVERS.
- 6. INTERPRETATION OF DATUM REFERENCE FRAME IN ACCORDANCE WITH SECT 4.4.1.1 OF ASME Y14.5M-1994.
- △ REFERENCE APPLICATION SPEC. 114-13120, HOLE A, FOR RECOMMENDED DRILL HOLE DIAMETER AND PLATING THICKNESS.
- △ REFERENCE APPLICATION SPEC. 114-13120, HOLE B, FOR RECOMMENDED DRILL HOLE DIAMETER AND PLATING THICKNESS.
- △ HOLE PATTERN REPEATS FOR EACH PORT. SPACING BETWEEN PORTS IS 14.25mm.
- △ LIGHT PIPE ASSEMBLY SHIPPED UNASSEMBLED TO CAGE ASSEMBLY. CAGE ASSEMBLY TO BE PRESSED INTO THE PCB PRIOR TO ATTACHING THE LIGHT PIPE ASSEMBLY TO THE CAGE.
- 11. PRODUCT COMPLIES WITH SPECIFICATION SFF-8433 IMPROVED PLUGGABLE FORM FACTOR FOR SFP+ GANGED CAGES.



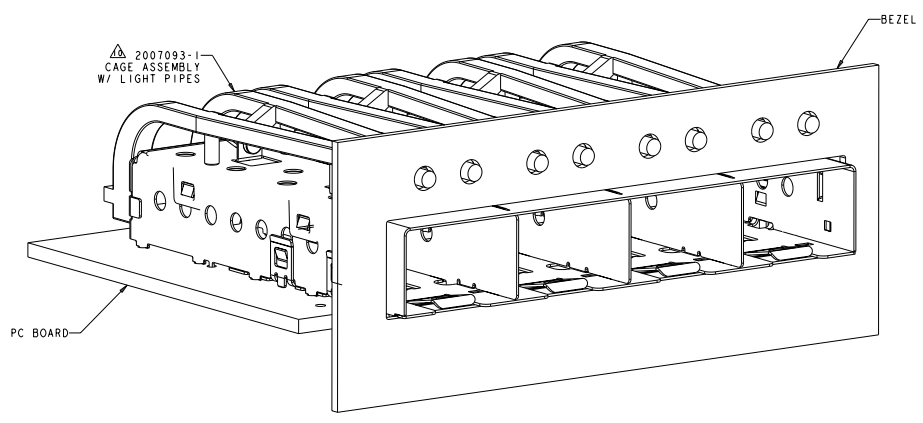
2007093-1
 SCALE 4:1
 2007093-1
 PART NUMBER

| | | | | | |
|------------------|-------------|-------------|------------------|-------------|-------------|
| DATE: 2007-06-27 | BY: SCHMIDT | 27 JUN 2007 | DATE: 2007-06-27 | BY: SCHMIDT | 27 JUN 2007 |
| REV: 00 | REV: 00 | REV: 00 | REV: 00 | REV: 00 | REV: 00 |
| DATE: 2007-06-27 | BY: SCHMIDT | 27 JUN 2007 | DATE: 2007-06-27 | BY: SCHMIDT | 27 JUN 2007 |
| REV: 00 | REV: 00 | REV: 00 | REV: 00 | REV: 00 | REV: 00 |
| DATE: 2007-06-27 | BY: SCHMIDT | 27 JUN 2007 | DATE: 2007-06-27 | BY: SCHMIDT | 27 JUN 2007 |
| REV: 00 | REV: 00 | REV: 00 | REV: 00 | REV: 00 | REV: 00 |
| DATE: 2007-06-27 | BY: SCHMIDT | 27 JUN 2007 | DATE: 2007-06-27 | BY: SCHMIDT | 27 JUN 2007 |
| REV: 00 | REV: 00 | REV: 00 | REV: 00 | REV: 00 | REV: 00 |

| REV | DATE | DESCRIPTION | BY | CHK | APP |
|-----|------|-------------|----|-----|-----|
| 00 | | SEE SHEET 1 | | | |



2007093-1
MOUNTED ON PC BOARD SHOWN
THRU RECOMMENDED BEZEL



2007093-1
MOUNTED ON PC BOARD SHOWN
THRU RECOMMENDED BEZEL

| | | | |
|---|--|--|--|
| DATE: 21 JUN 2007 TIME: 10:00 AM DRAWN BY: SCHEIDT CHECKED BY: SCHEIDT APPROVED BY: SCHEIDT | | TITLE: SFP+ 1X4 CAGE ASSEMBLY PRESS FIT, EMI GASKET WITH LIGHT PIPES | |
| PART NO: 00779 REV: 00 QTY: 1000 | | STATE: PA COUNTY: BERKSHIRE CITY: WARREN, PA 17169-3600 | |
| CUSTOMER DRAWING | | SHEET: 5 OF 5 DRAWN BY: SCHEIDT | |

