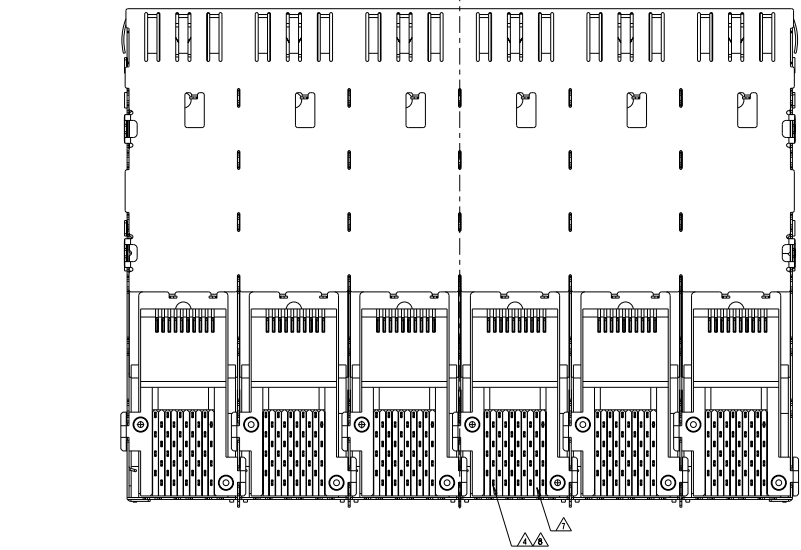
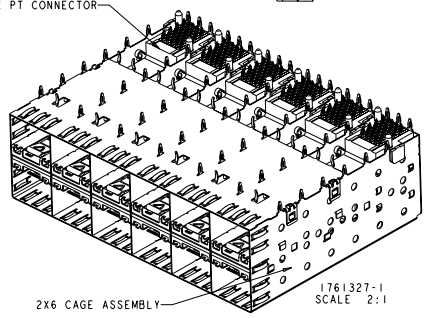
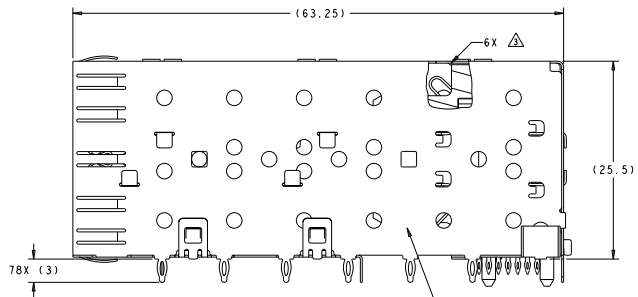
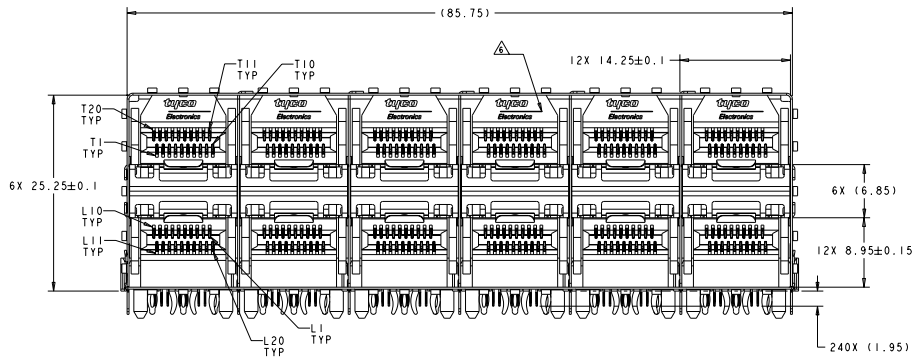


DATE: 2014.07.28
 DRAWING NO: 1761327-1
 BY: TYP
 CHECKED BY: TYP
 APPROVED BY: TYP

REV	DATE	DESCRIPTION	BY	CHK	APP
B1	2014.08.01	REVISED ECR-08-013764	ALUMBA	AZ	SY
C	2014.08.02	ECR-08-020454	YINDONG	AL	SY



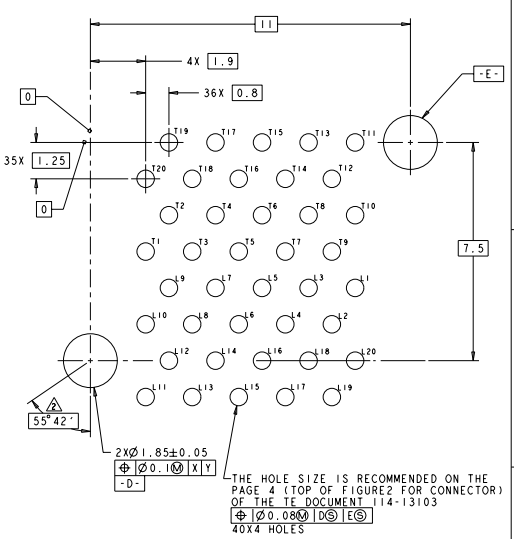
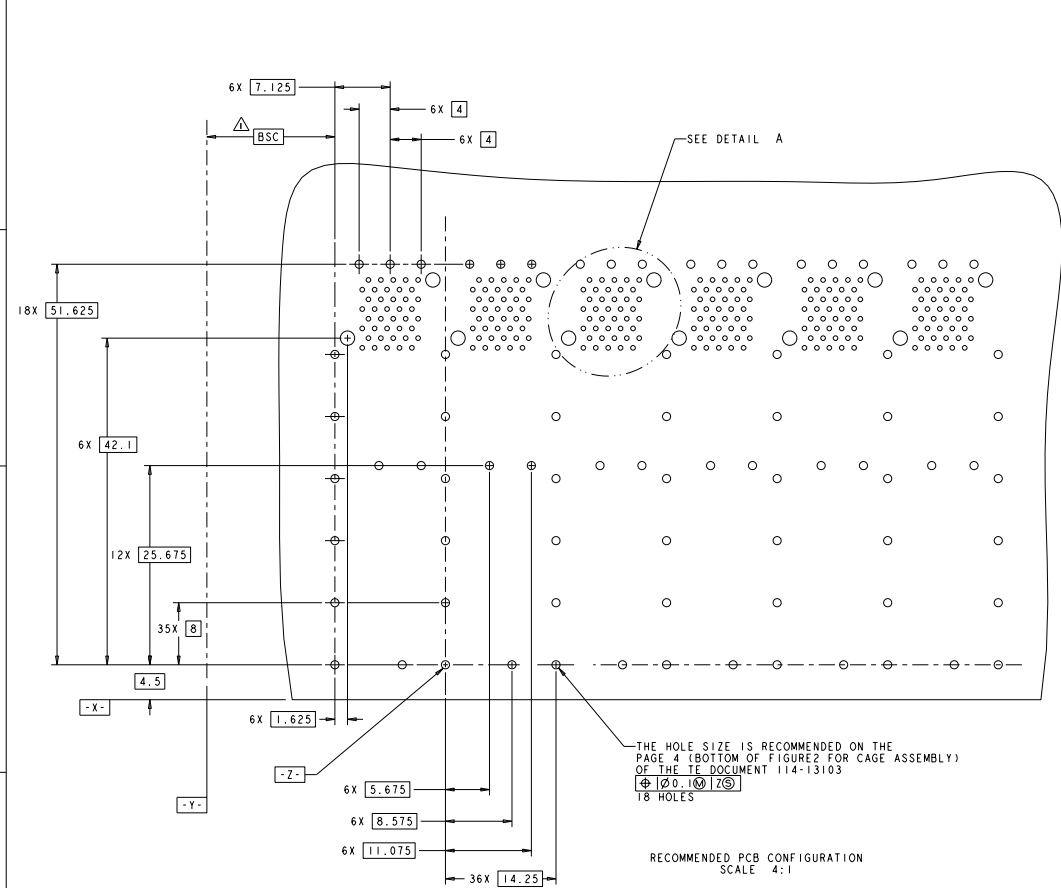
- △ DATUM AND BASIC DIMENSION TO BE DETERMINED BY CUSTOMER.
- △ INTERPRETATION OF DATUM REFERENCE FRAME IN ACCORDANCE WITH SECT 4.4.1.1 OF ASME Y14.5M-1994.
- △ TOP OF PT CONNECTOR TO BE 0-0.15 FROM INSIDE SURFACE OF CAGE.
- △ COPPER ALLOY.
- △ 1.25μM MIN TIN PER ASTM B 545 OVER NICKEL FLASH PER QQ-N-290. NON-PLATED EDGES PERMISSIBLE.
- △ LCP, HIGH TEMPERATURE, UL 94V-0 RATED, BLACK.
- △ POLYESTER, UL 94V-0 RATED, BLACK.
- △ CONTACT MATING AREA: SURFACE TREATMENT OVER 0.76μM MIN GOLD PER ASTM B 488 OVER 1.27μM MIN NICKEL PER QQ-N-290. NEEDLE EYE: 1.25μM MIN TIN PER ASTM B 545 OVER 1.27μM MIN NICKEL PER QQ-N-290. REMAINDER OF CONTACT: 0.76μM MIN NICKEL PER QQ-N-290.

1761327-1
 PART NUMBER

NO.	REV.	DATE	DESCRIPTION	BY	CHK	APP
1	00	2014.07.28	CAGE AND PT CONNECTOR ASSEMBLY PRESS FIT, 2X6, STANDARD PROFILE SIP	TYP	TYP	TYP

1761327-1
 PART NUMBER

REV	DATE	REVISIONS
ES	00	SEE SHEET 1



DETAIL A
 SCALE 15:1

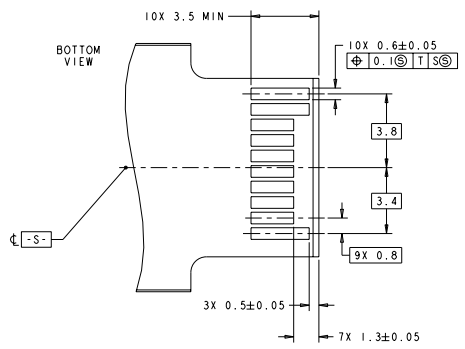
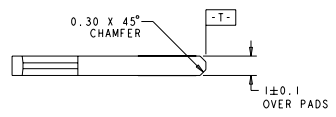
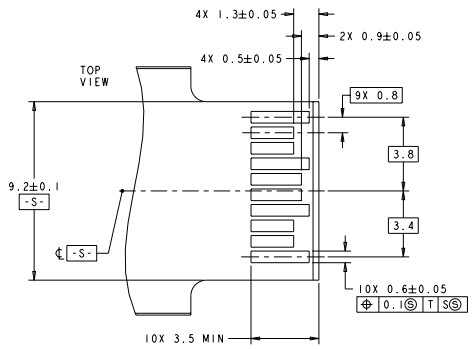
THE HOLE SIZE IS RECOMMENDED ON THE PAGE 4 (BOTTOM OF FIGURE 2 FOR CAGE ASSEMBLY) OF THE TE DOCUMENT 114-13103

Ø 0.10 ± 0.01 Z
 18 HOLES

RECOMMENDED PCB CONFIGURATION
 SCALE 4:1

TECHNICAL DATA		DESIGNER: ZHANG		DATE: 11/16/13	
DRAWN: WANG		CHECKER: ZHANG		DATE: 11/16/13	
PART NO: 100-2161		REV: 1		DATE: 11/16/13	
SPECIFICATION NO: 114-13103		REV: 1		DATE: 11/16/13	
CUSTOMER DRAWING		SCALE CODE: 1:1		DRAWN BY: WANG	

REV	DATE	DESCRIPTION	BY	CHK	APP
ES	00	SEE SHEET 1			



RECOMMENDED LAYOUT FOR MATING TRANSCEIVER PCB
SCALE 10:1

TIAN ELECTRONICS CORPORATION		TIAN ELECTRONICS CORPORATION		TIAN ELECTRONICS CORPORATION	
SHANGHAI, CHINA		SHANGHAI, CHINA		SHANGHAI, CHINA	
TEL: +86 21 5011 1111		TEL: +86 21 5011 1111		TEL: +86 21 5011 1111	
FAX: +86 21 5011 1111		FAX: +86 21 5011 1111		FAX: +86 21 5011 1111	
WWW.TIANELECTRONICS.COM		WWW.TIANELECTRONICS.COM		WWW.TIANELECTRONICS.COM	
E-MAIL: SALES@TIANELECTRONICS.COM		SALES@TIANELECTRONICS.COM		SALES@TIANELECTRONICS.COM	
ADDRESS: NO. 1000, JINJIANG ROAD, SHANGHAI, CHINA		NO. 1000, JINJIANG ROAD, SHANGHAI, CHINA		NO. 1000, JINJIANG ROAD, SHANGHAI, CHINA	
POSTAL CODE: 200000		POSTAL CODE: 200000		POSTAL CODE: 200000	
CITY: SHANGHAI		CITY: SHANGHAI		CITY: SHANGHAI	
COUNTRY: CHINA		COUNTRY: CHINA		COUNTRY: CHINA	
DRAWING NO: 116-13103		DRAWING NO: 116-13103		DRAWING NO: 116-13103	
REV: A		REV: A		REV: A	
DATE: 00778		DATE: 00778		DATE: 00778	
CUSTOMER DRAWING		CUSTOMER DRAWING		CUSTOMER DRAWING	
PAGE: 2		PAGE: 2		PAGE: 2	
OF: 3		OF: 3		OF: 3	
SHEET: 3		SHEET: 3		SHEET: 3	
OF: 3		OF: 3		OF: 3	