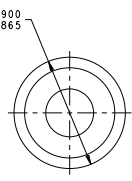
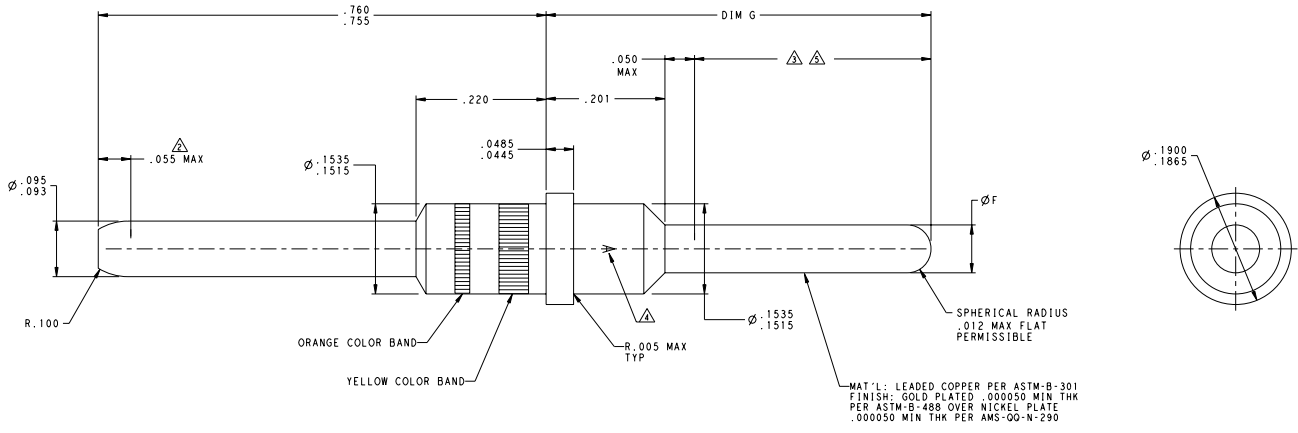


REV	DATE	DESCRIPTION	BY	CHK	APP
S	REV PER ECO 10-024292				



- △ COLOR CODE: AS SHOWN IN APPROXIMATE LOCATION SHOWN. THE YELLOW BAND SHALL BE APPROXIMATELY TWICE THE WIDTH OF THE ORANGE BAND.
- △ ELECTRICAL ENGAGEMENT POINT.
- △ THIS AREA SOLDER DIPPED.
- △ MANUFACTURERS LOGO; LOCATION & ORIENTATION OPTIONAL.
- △ SOLDER IS RoHS-COMPLIANT Sn.

REMARKS	DIM G	DIM F	PART NUMBER
△	.776	.079-.083	3-448140-0
△ △	.617±.010	.087 MAX	2-448140-7
△	.576	.079-.083	2-448140-6
△ △ △	.617	.087 MAX	2-448140-3
△	.606	.079-.083	2-448140-2
△ △	.651	.087 MAX	1-448140-9
△	.505	.079-.083	1-448140-8
△ △	.617	.079-.083	1-448140-5
△	.404	.079-.083	1-448140-2
△	.536	.087 MAX	448140-9
-	.415	.079-.083	448140-8
△	.651	.079-.083	448140-6
△	.536	.079-.083	448140-3
△	.536	.079-.083	448140-2

DATE: 10/20/2015 TIME: 10:00 AM USER: J. THOMAS TITLE: TRACER PROJECT: 100779		DATE: 10/20/2015 TIME: 10:00 AM USER: J. THOMAS TITLE: TRACER PROJECT: 100779	
DIMENSIONS: INCHES TOLERANCES: FRACTIONS DECIMALS: .001 ANGLES: DECIMALS THREADS: SEE CALLOUTS		POSTED PIN CONTACT SIZE 12, ARINC 600 SIZE: 12-1 CASE CODE: 448140 PART NUMBER: 100779-448140 CUSTOMER DRAWING: 12-1	