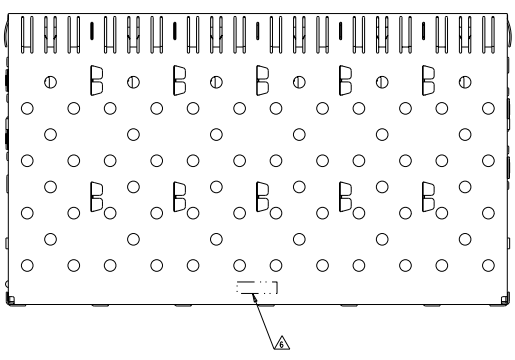


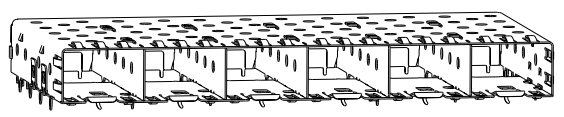
8	7	6	5	4	3	2	1
DATE VARIATION TO IMPROVEMENTS		REVISIONS FOR PUBLICIZATION					
⑩ 001002020		ALL RIGHTS RESERVED					

REV. NO.		DESCRIPTION	DATE	BY	CHK
01	00	REVISED PER ECO-11-004835			

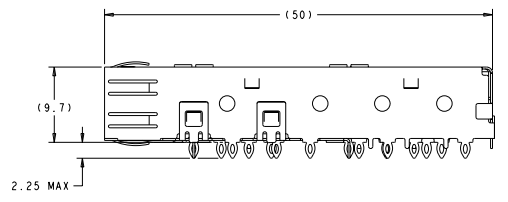
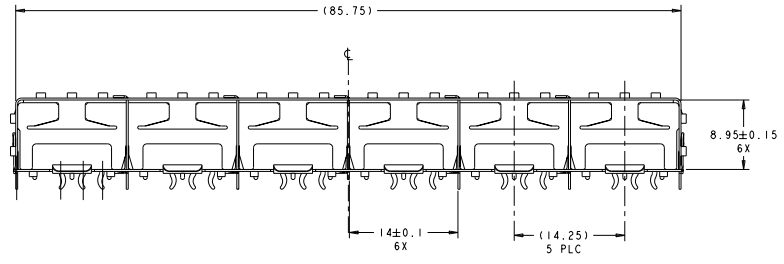


SCALE 3:1

- △ MATERIAL: COPPER ALLOY.
- △ TIN PLATING PER ASTM B 545, 1.25µm MINIMUM THICKNESS, ALL OVER NICKEL FLASH PER QQ-N-290. NON-PLATED EDGES ARE PERMISSIBLE.
- △ DATUM AND BASIC DIMENSIONS ESTABLISHED BY CUSTOMER.
- △ PADS AND VIAS CHASSIS GROUND.
- △ REFERENCE APPLICATION SPEC 114-13120. HOLE A, FOR RECOMMENDED DRILL HOLE DIAMETER AND PLATING THICKNESSES.
- △ COMPANY LOGO IN APPROXIMATE AREA SHOWN



1761015-1
SCALE 3:1



IX6 CAGE ASSEMBLY	1761015-1
DESCRIPTION	PART NO

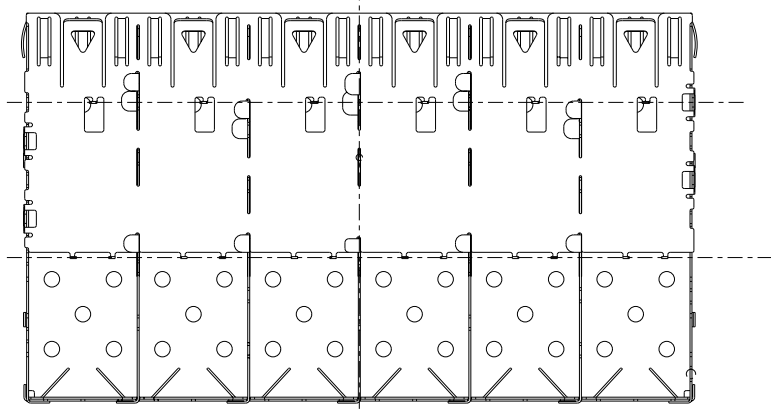
THIS DRAWING IS A CONTROLLED DOCUMENT.		REV. NO. 00 FEB2004		TE Connectivity	
REVISED BY	DATE	REVISED BY	DATE	ASSEMBLY, CAGE, PRESS FIT, 1X6, SEP	
W. PHILLIPS	FEB2004	W. PHILLIPS	FEB2004	SPECIFICATION NO. 114-13120	
REVISED BY	DATE	REVISED BY	DATE	SIZE	SCALE CODE
W. PHILLIPS	FEB2004	W. PHILLIPS	FEB2004	A	1:1
REVISED BY	DATE	REVISED BY	DATE	PART NO	DESCRIPTION
W. PHILLIPS	FEB2004	W. PHILLIPS	FEB2004	1761015	IX6 CAGE ASSEMBLY
REVISED BY	DATE	REVISED BY	DATE	CUSTOMER DRAWING	FIGURE 4:1
W. PHILLIPS	FEB2004	W. PHILLIPS	FEB2004		

489 12011
Pre-ENGINEER DRAWING

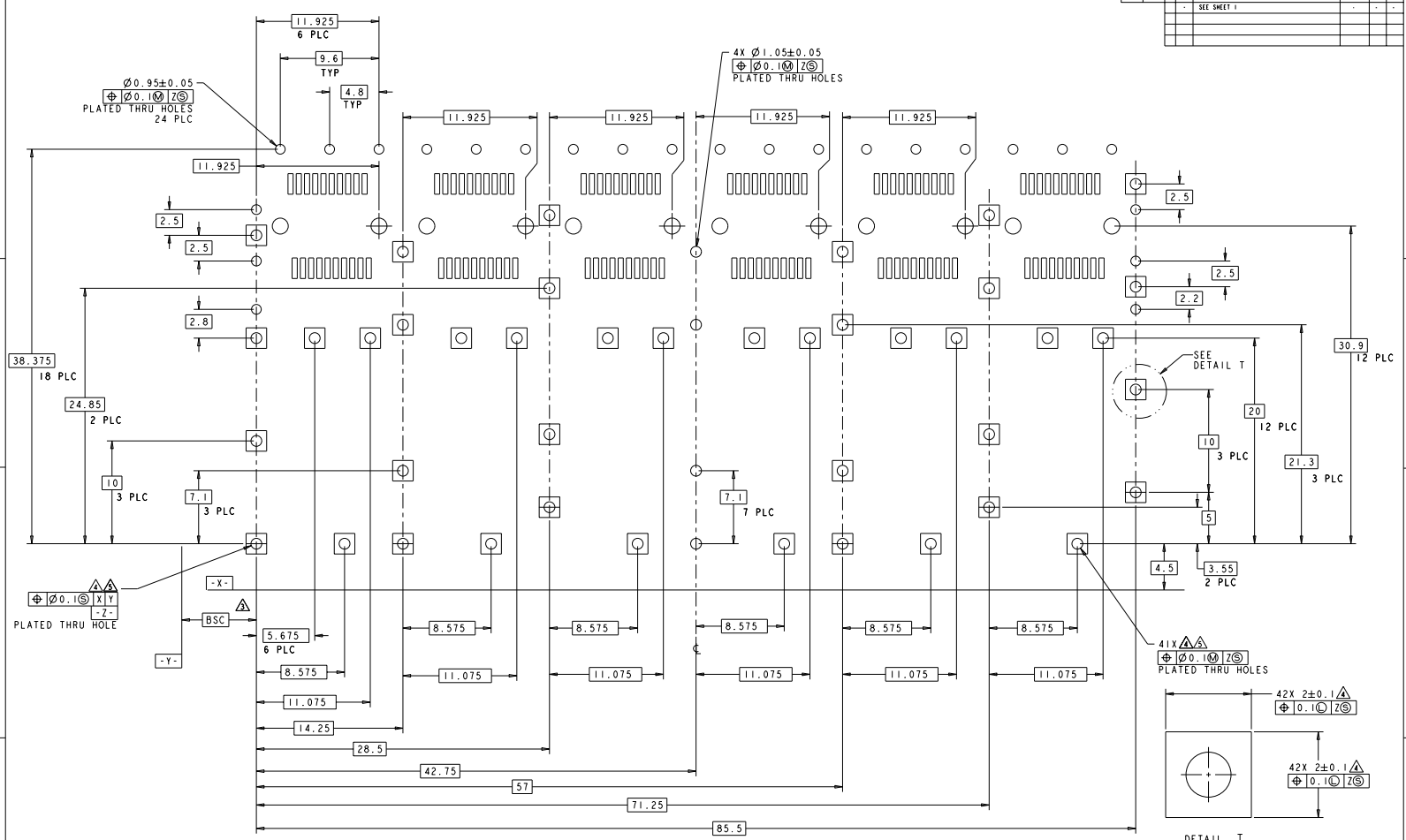
8 7 6 5 4 3 2 1

FILE NUMBER TO IMPROVE REVISIONS FOR PUBLICATION ALL RIGHTS RESERVED

REV	DATE	DESCRIPTION	BY	CHK
GP	00	SEE SHEET 1		



THIS DRAWING IS A CONTROLLED DOCUMENT.		REV: 00	DATE: 02/20/04	TE Connectivity STE
DESIGNED BY: M. PHILLIPS	DATE: 02/20/04	REV: 00	DATE: 02/20/04	
DRAWN BY: M. PHILLIPS	DATE: 02/20/04	REV: 00	DATE: 02/20/04	ASSEMBLY CAGE - PRESS FIT, 1X6, SEP
CHECKED BY: M. PHILLIPS	DATE: 02/20/04	REV: 00	DATE: 02/20/04	STATE CASE CODE DRAWING NO: 116-13120 PART: A 00779 (C) 1761015 CUSTOMER DRAWING
MATERIAL: 116-13120 FINISH:				REVISIONS: 1 SHEET 2 OF 4

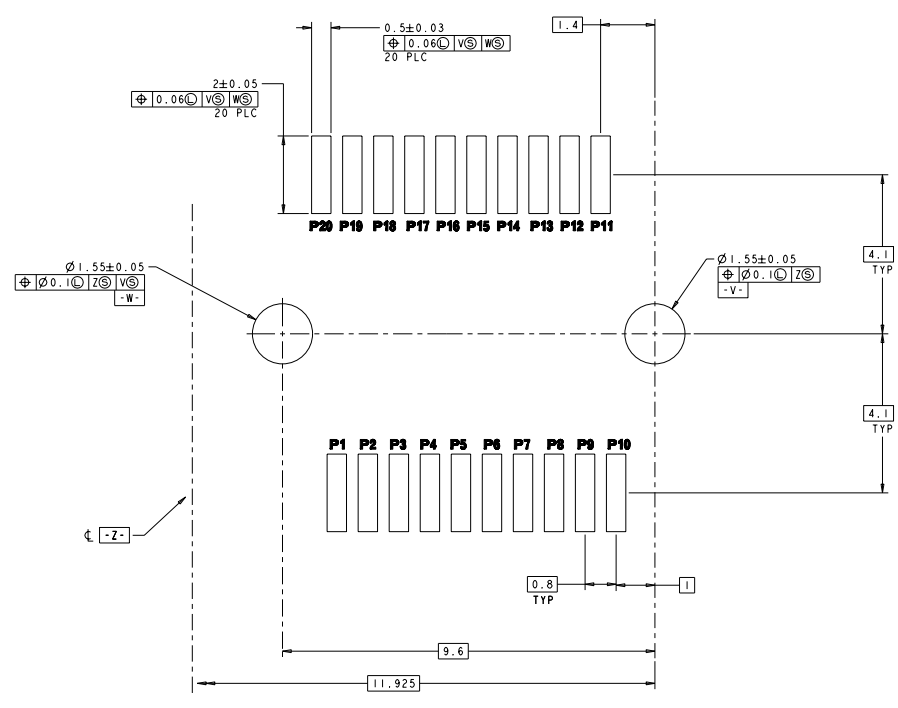


RECOMMENDED PCB CONFIGURATION
SCALE 5:1

DETAIL T
SCALE 25:1

THIS DRAWING IS A CONTROLLED DOCUMENT.		REV. 00	DATE: FEB2004	TE Connectivity ASSEMBLY, CAGE - PRESS FIT, 1X6, SIP
DESIGNED BY:	PHILLIPS	DATE:	FEB2004	
DRAWN BY:	PHILLIPS	DATE:	FEB2004	PART NO: 168-1950 SPECIFICATION DOC: 114-13120
CHECKED BY:	PHILLIPS	DATE:	FEB2004	
APPROVED BY:	PHILLIPS	DATE:	FEB2004	STATE CASE CODE (DRAWING NO): A 00779 1761015
CUSTOMER DRAWING				SHEET: 4 1 3 4 (M/D)

REV		REVISIONS	
NO	DATE	DESCRIPTION	BY
00		SEE SHEET 1	



DETAIL U
 SCALE 20:1

THIS DRAWING IS A CONTROLLED DOCUMENT.		REV: 00	DATE: 27 FEB 2004	 TE Connectivity
DESIGNED BY: J. PHILLIPS	APPROVED BY: J. PHILLIPS	REV: 00	DATE: 27 FEB 2004	
DATE: 27 FEB 2004	BY: J. PHILLIPS	DATE: 27 FEB 2004	BY: J. PHILLIPS	ASSEMBLY, CAGE - PRESS FIT, 1X6, STEP
DATE: 27 FEB 2004	BY: J. PHILLIPS	DATE: 27 FEB 2004	BY: J. PHILLIPS	STATE CASE CODE DRAWING NO A 00779 1761015
DATE: 27 FEB 2004	BY: J. PHILLIPS	DATE: 27 FEB 2004	BY: J. PHILLIPS	CUSTOMER DRAWING