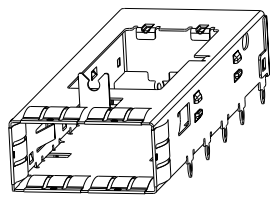
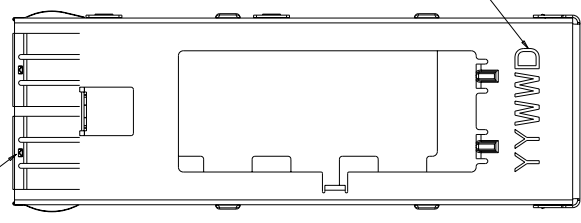


| REV. NO. | | REV. DATE | | REV. DESCRIPTION | | BY | CHK | APP |
|----------|----|-----------------------|--|------------------|--|----|-----|-----|
| B | 00 | REV PER ECO-09-020400 | | | | | | |

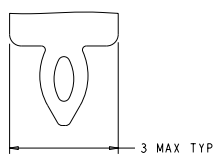
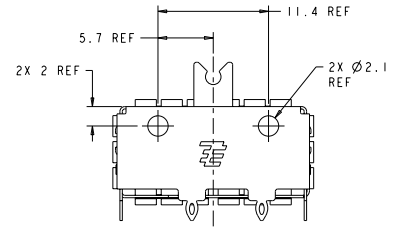
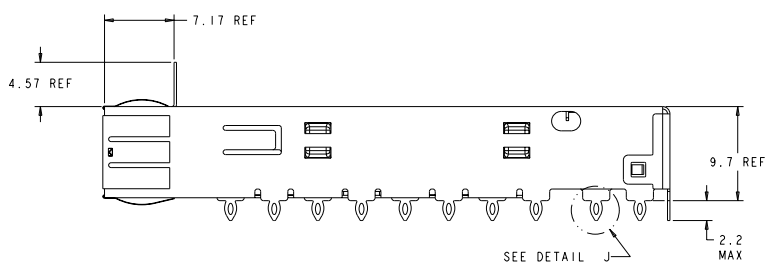
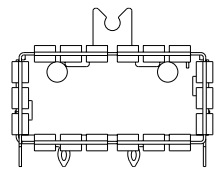


ISOMETRIC VIEW
SCALE 4:1

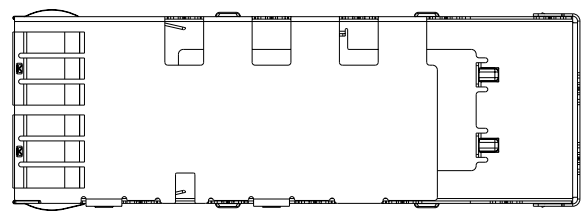
Sn42Bi58 SOLDER
6 PLACES



- △ CAGE MATERIAL: 0.25 THICK NICKEL SILVER.
SPRING MATERIAL: COPPER ALLOY.
- △ MINIMUM PITCH DIMENSION.
- 3. MATES WITH QSPF MSA COMPATIBLE TRANSCEIVER.
- △ REFERENCE APPLICATION SPEC 114-13217 FOR RECOMMENDED DRILL HOLE DIAMETER AND PLATING THICKNESS.
- △ DATUMS AND BASIC DIMENSIONS ESTABLISHED BY CUSTOMER.
- 6. MINIMUM PC BOARD THICKNESS:
SINGLE SIDED = 1.45mm
DOUBLE SIDED = 2.2mm
- 7. MAX HEIGHT OF LED OFF PC BOARD NOT TO EXCEED 1.7 mm.
- △ DATUM [-A-] IS TOP SURFACE OF HOST BOARD.
- △ SURFACE TRACES PERMITTED WITHIN THIS AREA EXCEPT WHERE CAGE STANDOFFS, SHOWN IN DETAIL J, CONTACT PC BOARD.
- △ DATE CODE (YYWWDD) MARKED APPROXIMATELY AS SHOWN.
- △ SPRING FINISH: 0.8μm MIN TIN OVER 0.8μm MIN NICKEL
NON-PLATED EDGES PERMISSIBLE.
- 12. PRODUCT HAS NOT COMPLETED QUALIFICATION TESTING.



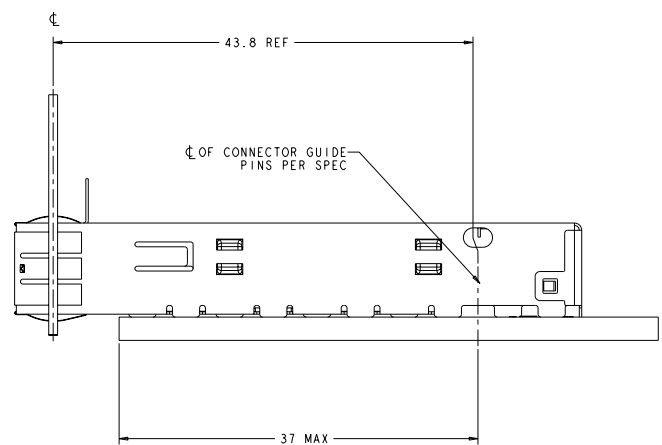
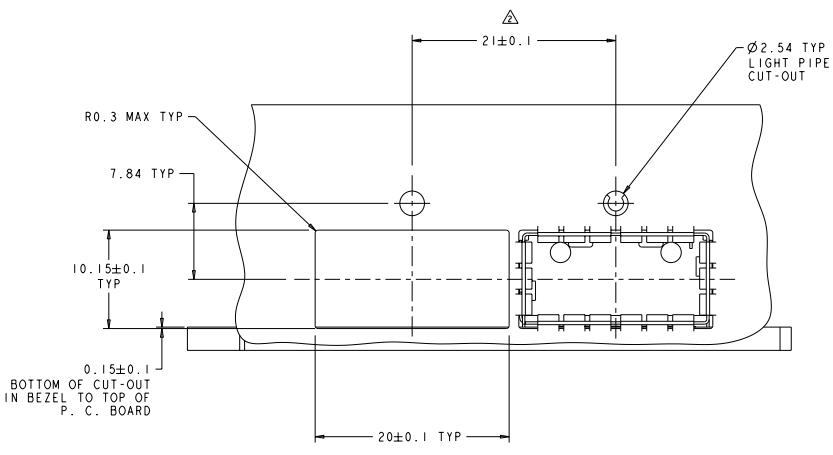
DETAIL J
SCALE 20:1



1888674-1
PART NUMBER

| | | | | | | | |
|---|-----------------------------|-------------|---------------------|---|--------------------|------------------|---------------------|
| DATE: 08/22/2007 | BY: PDC ELECTRONICS COMPANY | REV. NO.: B | REV. DATE: 09/02/00 | REV. DESCRIPTION: REV PER ECO-09-020400 | BY: [Signature] | CHK: [Signature] | APP: [Signature] |
| CAGE ASSEMBLY, THRU BEZEL, OQFP, WITH LIGHTPIPE BRACKET | | | | STATE: PA | CAGE CODE: 1888674 | REV. NO.: 1 | REV. DATE: 08/22/07 |
| CUSTOMER DRAWING | | | | SCALE: 5:1 | PAGE 1 OF 1 | | |

| REV | DATE | DESCRIPTION | BY | CHK | APP |
|-----|------|-------------|----|-----|-----|
| 00 | | SEE SHEET 1 | | | |
| | | | | | |
| | | | | | |



RECOMMENDED BEZEL CUTOUT AND LOCATION

| | | | | | | | | | | | |
|---|--|---|--|---|--|---|--|---|--|---|--|
| TITLE: BEZEL CUTOUT PART NO.: 188-2286 REV: 1 DATE: 11-13-07 DRAWN BY: [Signature] CHECKED BY: [Signature] | | TTI ELECTRONICS CORPORATION 188-2286 1116-13217 CUSTOMER DRAWING | | TTI ELECTRONICS CORPORATION 188-2286 1116-13217 CUSTOMER DRAWING | | TTI ELECTRONICS CORPORATION 188-2286 1116-13217 CUSTOMER DRAWING | | TTI ELECTRONICS CORPORATION 188-2286 1116-13217 CUSTOMER DRAWING | | TTI ELECTRONICS CORPORATION 188-2286 1116-13217 CUSTOMER DRAWING | |
| SHEET NO.: 1 OF 1 | | DATE: 11-13-07 | | DRAWN BY: [Signature] | | CHECKED BY: [Signature] | | APPROVED BY: [Signature] | | TTI ELECTRONICS CORPORATION 188-2286 1116-13217 CUSTOMER DRAWING | |

