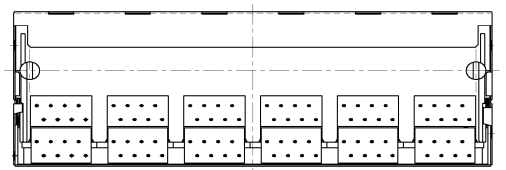
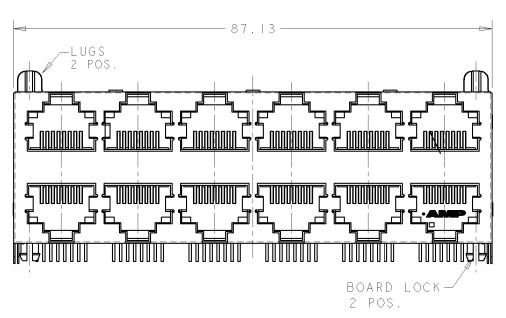
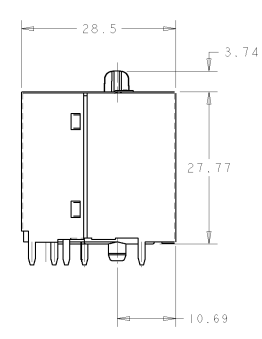
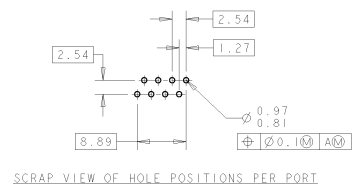


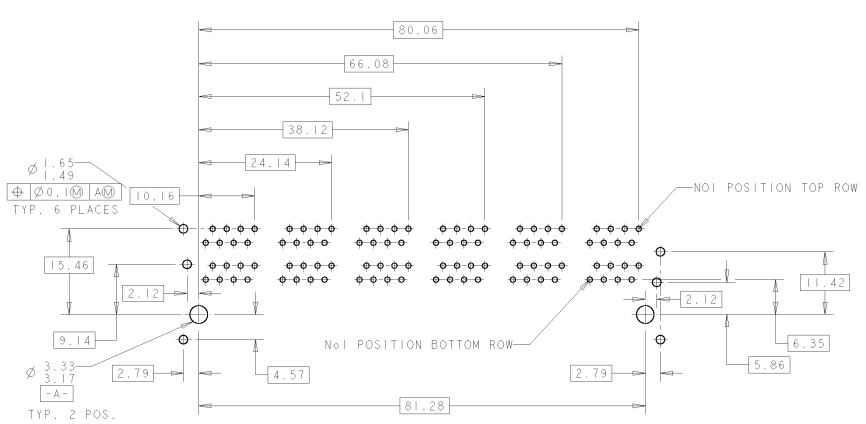
E-4-B - FILE CODE
C 348521

DO NOT SCALE DIMENSIONS IN MM.



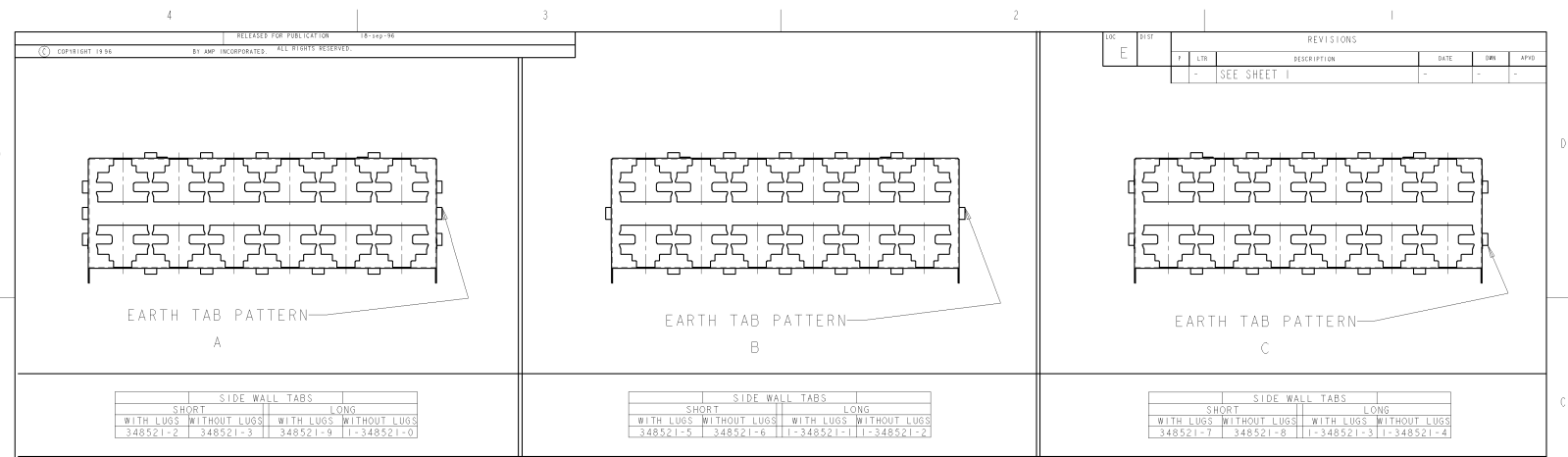
- SHIELDING
BRASS, TIN PLATED OVER COPPER.
- HOUSING AND CONTACT INSERTS MATERIAL
PBT, 30X G/R, UL94V-0/5V RATED, BLACK.
- CONTACTS
PHOS. BRONZE, SELECTIVELY GOLD PLATED OVER NICKEL
TIN/LEAD ON SOLDER TAILS.
- PACKAGING
10 CONNECTORS PER TRAY.
5 TRAYS PER CARTON.

SHT.1 SHOWS CONNECTOR 348521-1 SEE SHT 2 FOR PANEL GROUND VARIANTS

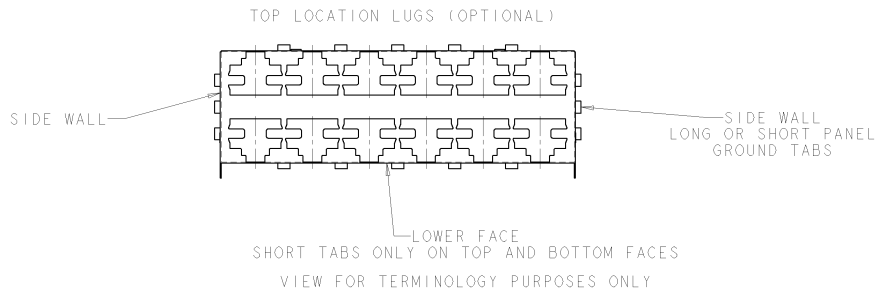


PCB HOLE POSITIONS VIEWED FROM CONNECTOR SIDE OF BOARD

DESCRIPTION		FINISH	MATERIAL	PART NUMBER
CUSTOMER DWG FOR REFERENCE ONLY		SEE NOTES	SEE NOTES	348521-4 348521-1
A	D. R. TERRY	ES00-0480-57	13-9-97	TOLERANCES UNLESS OTHERWISE STATED : DEC # 0.5 ANGLES ± 1°
0	D. R. TERRY	ES00-0480-56	18-9-96	DR. D. R. TERRY
1	D. R. TERRY	ES00-0010-99	11-11-96	CH. R. GOODALL
2	D. R. TERRY	ES00-0315-95	11-8-95	APP. R. GOODALL
3	R. GARDY	ES00-0414-94	11-8-94	NAME
4	R. GOODALL	ES00-0377-94	11-7-94	MULTI-PORT JACK ASSY.
5	J. SANDWELL	ES00-0177-02	18-06-02	6 ON 6 PORT SHIELDED 8 WAY
REV	APPROVED	CHANGE No.	DATE	SCALE LUC SIZE DWG. No. C348521
				REV B 1 / 2



OTHER COMBINATIONS AVAILABLE- CONSULT AMP G.B. ENGINEERING DEPT.



THIS DRAWING IS A CONTROLLED DOCUMENT FOR AMP. UNAUTHORIZED REPRODUCTION OR MODIFICATION SHALL BE PROHIBITED. IF IT IS NECESSARY TO CHANGE AMP THE CONTROLLING ENGINEERING ORGANIZATION SHOULD BE CONTACTED FOR THE LATEST REVISION.		DATE: 19-Sep-96 BY: D.R. TERRY	REVISIONS 1 LHM - SEE SHEET 1 DATE: - INK: - APPRO: -
DIMENSIONS IN m, mm THIRD ANGLE PROJECTION	TOLERANCES UNLESS OTHERWISE SPECIFIED LINEAR: - ±0.5 ANGULAR: - ±1°	AMP AMP of Great Britain Ltd. Stansmore, Middlesex, HA7 4BS.	PART NUMBER MULTI-PORT JACK ASSY. 6 ON 6 PORT, SHIELDED
MATERIAL: - FINISH: -	WEIGHT: - CUSTOMER DRAWING	SIZE: A2 CASE CODE: 00779 DRAWING NO: ©-348521	SCALE: 1:1 SHEET 2 OF 2 REV B