

- MATERIAL:
HOUSING: BLACK, THERMOPLASTIC, RATED UL 94V-0.
SHIELD: COPPER ALLOY WITH NICKEL PLATING.
CONTACTS: PHOSPHOR BRONZE.
CONTACT PLATING: 0.05µm MIN GOLD OVER
0.76µm MIN PALLADIUM-NICKEL, AT MATING
INTERFACE CONTACT AREA.
- RECOMMENDED MIN PCB THICKNESS 1.5mm (.062").
- OPERATING TEMPERATURE: FROM 0°C TO 70°C.
△ DATUM AND BASIC DIMENSION ESTABLISHED BY CUSTOMER.
△ FOR HOLE SIZE AND PLATINGS, SEE SHEET 5.

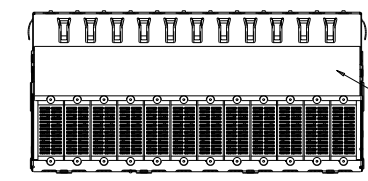
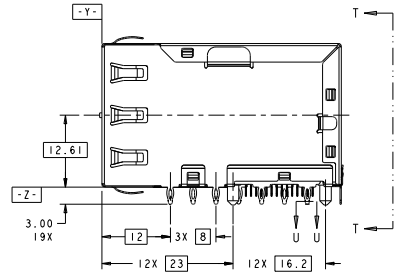
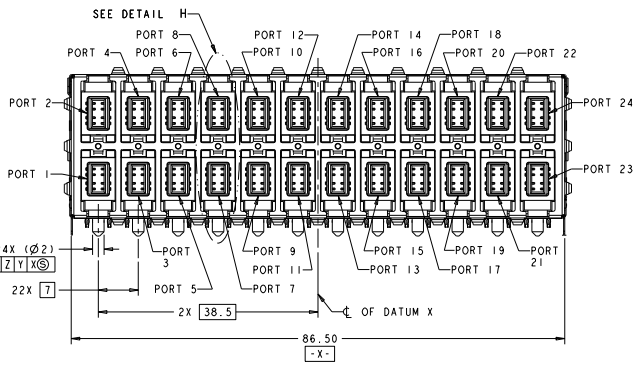
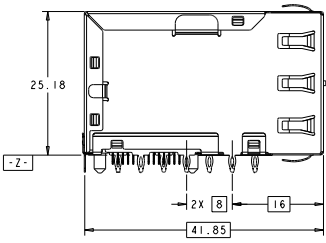
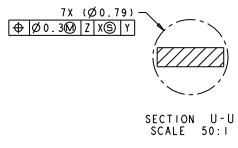
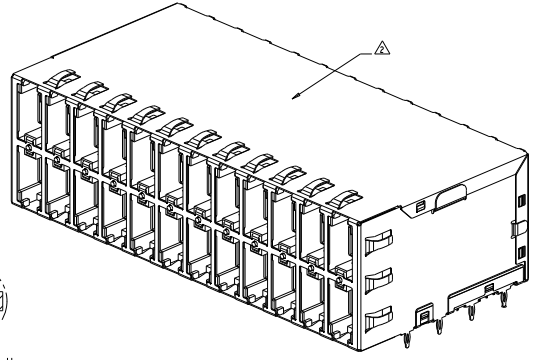
- △ TE LOGO, PART NUMBER, DATE CODE AND COUNTRY OF ORIGIN, SHOWN APPROXIMATE AREA.
- MAGNETICS:
- APPLICATION: 10/100/1000 BASE -T
- IMPEDANCE: 100 OHMS
- TRANSMIT OPEN CIRCUIT INDUCTANCE (OCL): 350µH (MIN)
@100KHZ, 0.1 VRMS WITH 8mA DC BIAS
FOR EACH TRANSFORMER OVER T=0°C-+70°C
- TURNS RATIO (CHIP:CABLE): 1:1 ALL PAIRS
PERFORMANCE:
- ALL PAIRS ARE BI-DIRECTIONAL

FREQUENCY	INSERTION LOSS	RETURN LOSS	CROSSTALK ATTENUATION	COMMON MODE REJECTION RATIO
0.5MHz - 1MHz	1.2dB (MAX)	18dB (MIN)	70dB (MIN)	30dB (MIN)
1MHz - 40MHz	1.2dB (MAX)	18dB (MIN)	33-20X LOG (F/80)dB (MIN)	30dB (MIN)
40MHz - 100MHz	1.2dB (MAX)	12-20X LOG (F/80)dB (MIN)	33-20X LOG (F/80)dB (MIN)	30dB (MIN)

ALL MAGNETIC ELECTRICAL CHARACTERISTICS RATED AT T=25°C

- ISOLATION VOLTAGE: 2250VDC(MAX) FOR 60 SECONDS WITH A RISE TIME OF 500V/SEC, WITH ALL PORTS CONNECTED.

- LED IS DRIVEN WITH CURRENT AT APPROX 20 mA
DOMINANT WAVELENGTH (λD): GREEN 573 nm TYP AT IF=20mA
FORWARD VOLTAGE (VF): GREEN 2.0V TYP at IF=20mA
DOMINANT WAVELENGTH (λD): RED 624 nm TYP AT IF=20mA
FORWARD VOLTAGE (VF): RED 2.0V TYP at IF=20mA
DOMINANT WAVELENGTH (λD): YELLOW 589 nm TYP AT IF=20mA
FORWARD VOLTAGE (VF): YELLOW 2.0V TYP at IF=20mA



WITH	YELLOW/GREEN BI-COLOR	1-2057004-2
WITHOUT	YELLOW/GREEN BI-COLOR	2057004-2
WITHOUT	RED/GREEN BI-COLOR	2057004-1
BOTTOM INSULATION TAPE	LED COLORS	PART NUMBER

THIS DRAWING IS A CONTROLLED DOCUMENT.

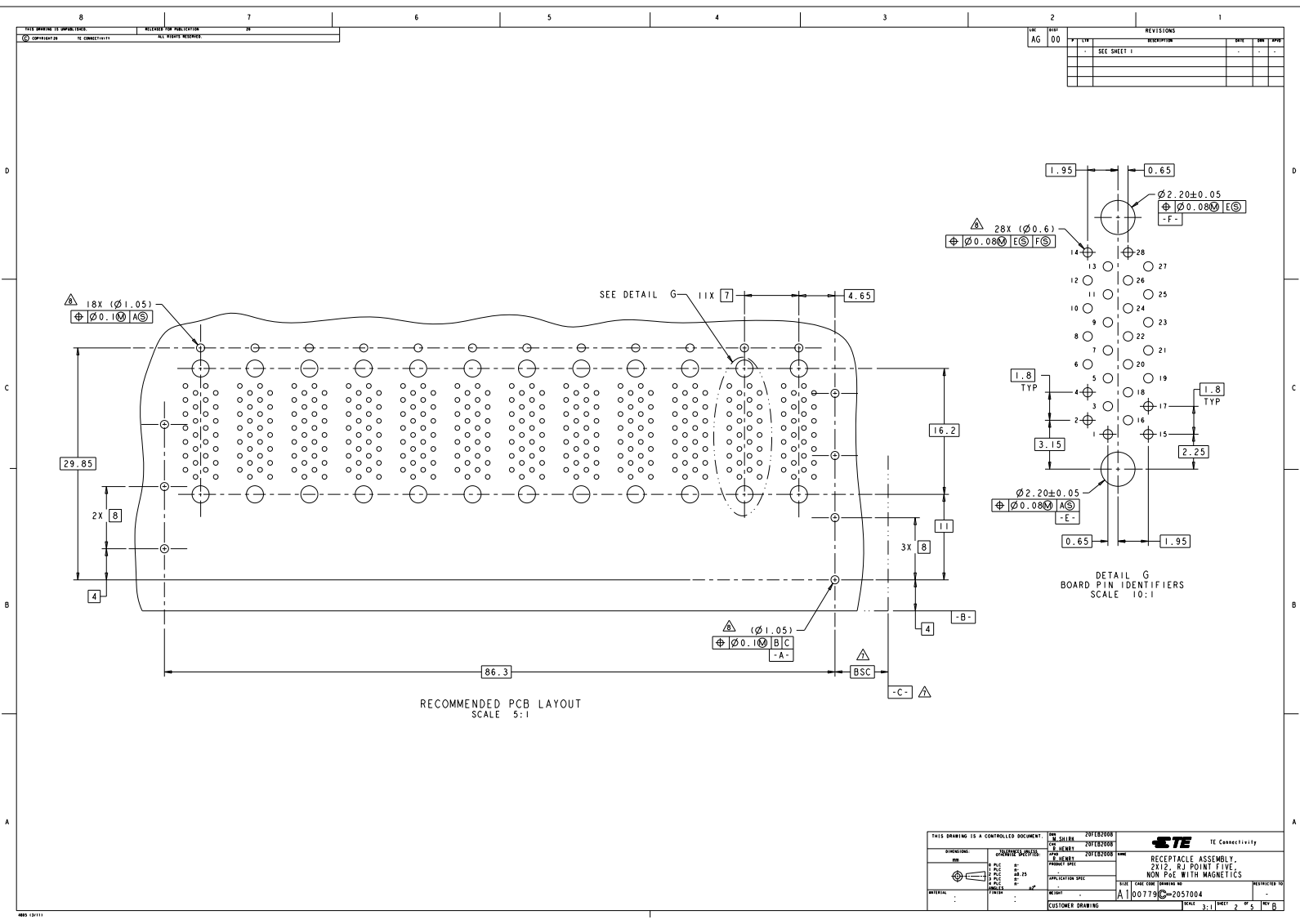
DATE: 20120001
REV: 00

TE CONNECTIVITY

RECEPTACLE ASSEMBLY, 2X12, RJ POINT FIVE, NON Pwr WITH MAGNETICS

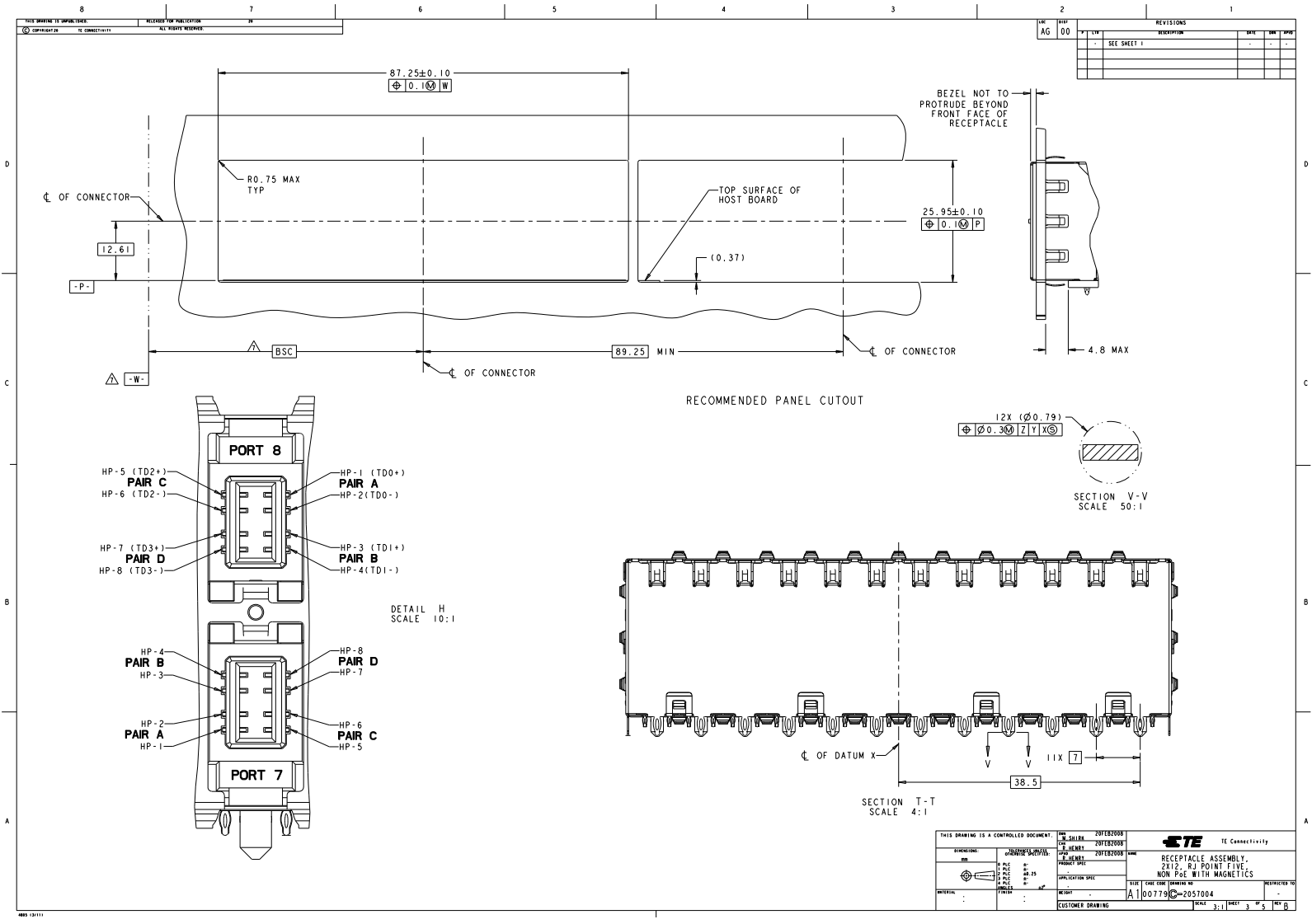
APP: 100779 @ 2057004

SCALE: 3:1 SHEET: 1 OF 1



REV	DATE	REVISIONS	BY	CHK	APP
AG	00	SEE SHEET 1	-	-	-

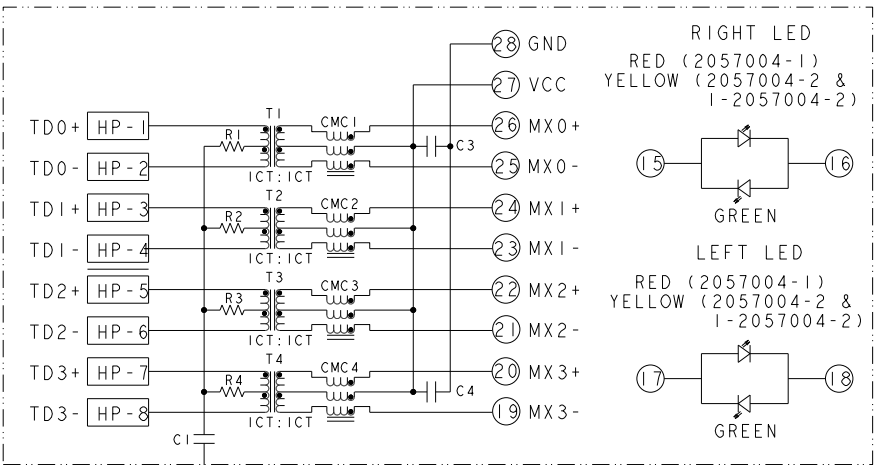
THIS DRAWING IS A CONTROLLED DOCUMENT.		REV. SKI/EL	DATE 20120308	 TE Connectivity
SYMBOL	DESCRIPTION	REV. SKI/EL	DATE 20120308	
REV. SKI/EL	DESCRIPTION	REV. SKI/EL	DATE 20120308	RECEPTACLE ASSEMBLY, 2X12, RJ POINT FIVE, NON Pwr WITH MAGNETICS
REV. SKI/EL	DESCRIPTION	REV. SKI/EL	DATE 20120308	TYPE SIZE QUANTITY REVISED TO
REV. SKI/EL	DESCRIPTION	REV. SKI/EL	DATE 20120308	SCALE 3:1 SHEET 2 OF 5
REV. SKI/EL	DESCRIPTION	REV. SKI/EL	DATE 20120308	CUSTOMER DRAWING



REV	DESCRIPTION	DATE	BY	CHK
00	SEE SHEET 1	-	-	-

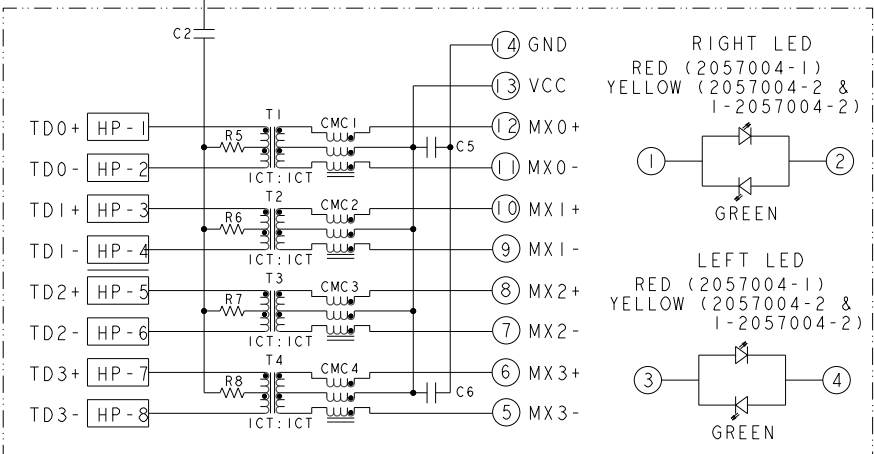
THIS DRAWING IS A CONTROLLED DOCUMENT.		REV	DATE	BY	CHK
		00	2012/03/01		
		01	2012/03/01		
		02	2012/03/01		
		03	2012/03/01		
		04	2012/03/01		
		05	2012/03/01		
		06	2012/03/01		
		07	2012/03/01		
		08	2012/03/01		
		09	2012/03/01		
		10	2012/03/01		
		11	2012/03/01		
		12	2012/03/01		
		13	2012/03/01		
		14	2012/03/01		
		15	2012/03/01		
		16	2012/03/01		
		17	2012/03/01		
		18	2012/03/01		
		19	2012/03/01		
		20	2012/03/01		
		21	2012/03/01		
		22	2012/03/01		
		23	2012/03/01		
		24	2012/03/01		
		25	2012/03/01		
		26	2012/03/01		
		27	2012/03/01		
		28	2012/03/01		
		29	2012/03/01		
		30	2012/03/01		
		31	2012/03/01		
		32	2012/03/01		
		33	2012/03/01		
		34	2012/03/01		
		35	2012/03/01		
		36	2012/03/01		
		37	2012/03/01		
		38	2012/03/01		
		39	2012/03/01		
		40	2012/03/01		
		41	2012/03/01		
		42	2012/03/01		
		43	2012/03/01		
		44	2012/03/01		
		45	2012/03/01		
		46	2012/03/01		
		47	2012/03/01		
		48	2012/03/01		
		49	2012/03/01		
		50	2012/03/01		
		51	2012/03/01		
		52	2012/03/01		
		53	2012/03/01		
		54	2012/03/01		
		55	2012/03/01		
		56	2012/03/01		
		57	2012/03/01		
		58	2012/03/01		
		59	2012/03/01		
		60	2012/03/01		
		61	2012/03/01		
		62	2012/03/01		
		63	2012/03/01		
		64	2012/03/01		
		65	2012/03/01		
		66	2012/03/01		
		67	2012/03/01		
		68	2012/03/01		
		69	2012/03/01		
		70	2012/03/01		
		71	2012/03/01		
		72	2012/03/01		
		73	2012/03/01		
		74	2012/03/01		
		75	2012/03/01		
		76	2012/03/01		
		77	2012/03/01		
		78	2012/03/01		
		79	2012/03/01		
		80	2012/03/01		
		81	2012/03/01		
		82	2012/03/01		
		83	2012/03/01		
		84	2012/03/01		
		85	2012/03/01		
		86	2012/03/01		
		87	2012/03/01		
		88	2012/03/01		
		89	2012/03/01		
		90	2012/03/01		
		91	2012/03/01		
		92	2012/03/01		
		93	2012/03/01		
		94	2012/03/01		
		95	2012/03/01		
		96	2012/03/01		
		97	2012/03/01		
		98	2012/03/01		
		99	2012/03/01		
		100	2012/03/01		

REVISONS		DATE	BY	CHK	APP
00	AG				
SEE SHEET 1					



TOP PORT

S5G73
GIGABIT CIRCUIT

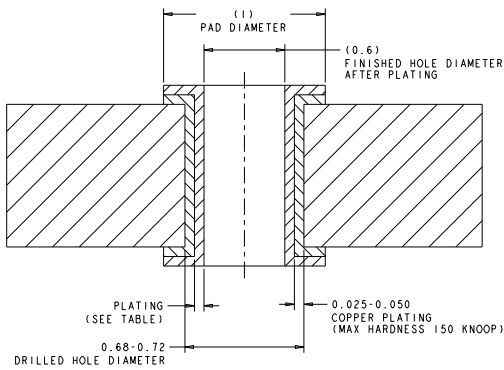


BOTTOM PORT

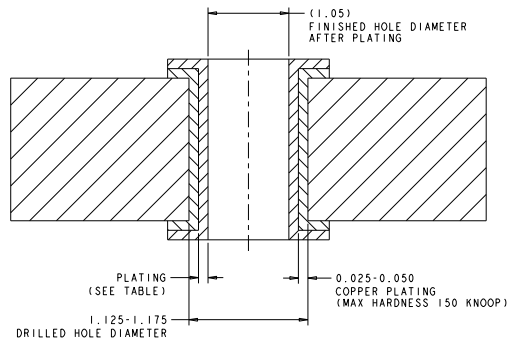
C1-C2 = 1000 pF, 2kV DE-COUPLING CAPACITORS
 C3-C6 = 0.01uF, 50V, CAPACITORS
 R1-R8 = 75 Ohm, 1/16W, RESISTORS

THIS DRAWING IS A CONTROLLED DOCUMENT		REV	DATE	BY	CHK	APP
REV 00		AG	20070001			
REV 01		AG	20070001			
REV 02		AG	20070001			
REV 03		AG	20070001			
REV 04		AG	20070001			
REV 05		AG	20070001			
REV 06		AG	20070001			
REV 07		AG	20070001			
REV 08		AG	20070001			
REV 09		AG	20070001			
REV 10		AG	20070001			
REV 11		AG	20070001			
REV 12		AG	20070001			
REV 13		AG	20070001			
REV 14		AG	20070001			
REV 15		AG	20070001			
REV 16		AG	20070001			
REV 17		AG	20070001			
REV 18		AG	20070001			
REV 19		AG	20070001			
REV 20		AG	20070001			
REV 21		AG	20070001			
REV 22		AG	20070001			
REV 23		AG	20070001			
REV 24		AG	20070001			
REV 25		AG	20070001			
REV 26		AG	20070001			
REV 27		AG	20070001			
REV 28		AG	20070001			
REV 29		AG	20070001			
REV 30		AG	20070001			
REV 31		AG	20070001			
REV 32		AG	20070001			
REV 33		AG	20070001			
REV 34		AG	20070001			
REV 35		AG	20070001			
REV 36		AG	20070001			
REV 37		AG	20070001			
REV 38		AG	20070001			
REV 39		AG	20070001			
REV 40		AG	20070001			
REV 41		AG	20070001			
REV 42		AG	20070001			
REV 43		AG	20070001			
REV 44		AG	20070001			
REV 45		AG	20070001			
REV 46		AG	20070001			
REV 47		AG	20070001			
REV 48		AG	20070001			
REV 49		AG	20070001			
REV 50		AG	20070001			

REV	DATE	DESCRIPTION	BY	CHK	APP
AG 00		SEE SHEET 1			



RECOMMENDED HOLE DIMENSIONS FOR SIGNAL CONTACTS



RECOMMENDED HOLE DIMENSIONS FOR SHIELD PINS

THICKNESS	PLATING
0.004-0.010	HOT AIR SOLDER LEVELING (HASL) TIN-LEAD (Sn Pb)
0.0005-0.001	IMMERSION TIN (Sn)
0.0002-0.0005	ORGANIC SOLDERABILITY PRESERVATIVE (OSP)
0.0001-0.0005 Au, 0.004-0.0076 Ni	IMMERSION GOLD (Au) OVER NICKEL (Ni) (ENIG)
0.010-0.025	TIN LEAD PLATING (Sn Pb)
0.0001-0.00015	IMMERSION SILVER (Ag)

THIS DRAWING IS A CONTROLLED DOCUMENT. DATE: 20180508. REV: 001. CUSTOMER DRAWING.

STE TE Connectivity

RECEPTACLE ASSEMBLY, 2X12, RJ POINT FIVE, NON Pwr WITH MAGNETICS

REV: 001. DATE: 20180508. SHEET: 5 OF 5.