

4

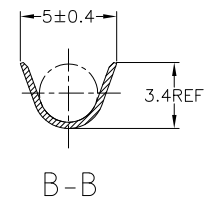
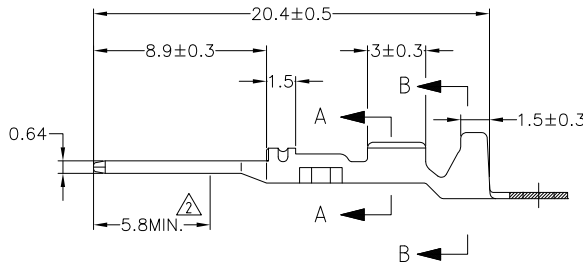
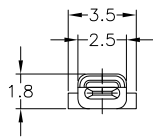
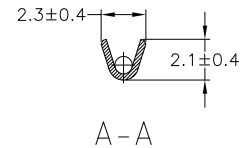
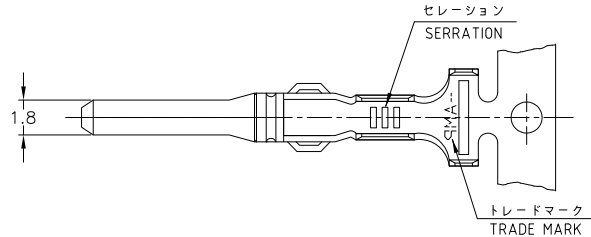
3

2

1

THIS DRAWING IS UNPUBLISHED. RELEASED FOR PUBLICATION
 © COPYRIGHT - By - ALL RIGHTS RESERVED.

LOC	DIST	REVISIONS			
P	LTR	DESCRIPTION	DATE	DWN	APVD
C1		REVISED PER ECO-11-005140	31MAR11	RK	HMR



- 1. 嵌合相手端子型番: 171630
- △ 部分金めっき
- 1 RECEPTACLE CONTACT: 171630
- △ SELECTIVE GOLD PLATING

△ SELECTIVE GOLD PLATING 部分金めっき	BRASS 10.32 鍍層 0.32	171631-2	2
PRE-TIN (0.76μm MIN.) 鍍めつき深	BRASS 10.32 鍍層 0.32	171631-1	1
FINISH 仕上	MATERIAL 材料	PN 型番	ITEM No. 項番

WIRE RANGE
 挿合電線断面積 AV,AVS
 0.2-0.5mm² (AWG #24-#20)

INSULATION DIA
 挿合外径 1.4-2.4

THIS DRAWING IS A CONTROLLED DOCUMENT.

DIMENSIONS: 単位: 種 mm	TOLERANCES UNLESS OTHERWISE SPECIFIED: 公差
0 PLC ±	1 PLC ±
2 PLC ±	3 PLC ±
4 PLC ±	ANGLES ±

一般公差 (GENERAL TOLERANCE)
10.00 ± 0.2
30.00 ± 0.25
100.00 ± 0.3
1.0 ± 0.1

MATERIAL
 材料
 SEE TABLE
 表参照

FINISH
 仕上
 SEE TABLE
 表参照

DWN T. SHINOHARA 27JUN01	TE Connectivity		
CHK K. BETSUI 27JUN01	ECONOSEAL J-MARKII+ CONNECTOR TAB CONTACT		
APVD K. BETSUI 27JUN01	NAME 名称	-	
PRODUCT SPEC 製品規格	SIZE	CAGE CODE	DRAWING NO 番号
APPLICATION SPEC 取付適用規格	14-5082	A300779	C=171631
WEIGHT 0.35 g	RESTRICTED TO	-	
CUSTOMER DRAWING	SCALE 尺度	SHEET 1 of 1	REV C1