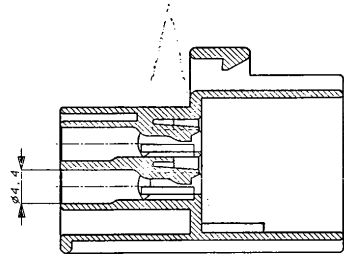
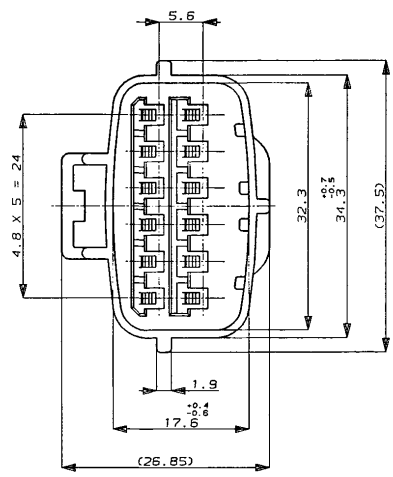
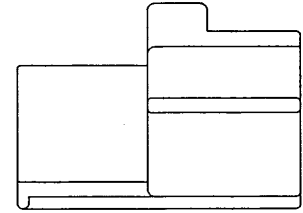
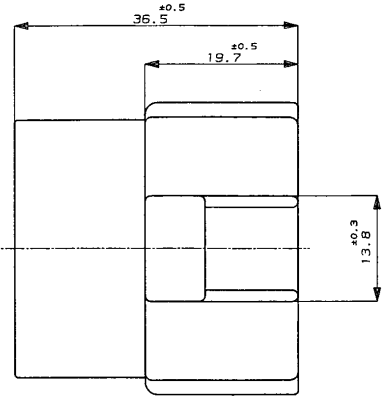
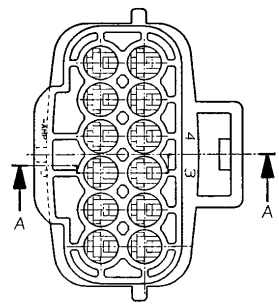


NUMBER 174663
METRIC
3-D ANGLE PROJECTION

DIMENSIONS IN MILLIMETERS, DO NOT SCALE PRINT

PRINT DIST
AMP-J
REV. 10/89



SECTION
断面 A-A

-2 ; 本
-2 AS SHOWN

注 :

- 1 かん合相手型番 : 174661
- 2 本品はダブルロックプレート P/N 174664 を装着して使用する

NOTE :

- 1 FOR PLUG HOUSING (P/N174661)
- 2 THIS PART MUST BE USED WITH DOBLE LOCK PLATE (P/N174664)

				© 1987 BY AMP (Japan) LTD. ALL RIGHTS RESERVED. AMP PRODUCTS COVERED BY PATENTS AND OR PATENTS PENDING		AMP AMP (JAPAN), LTD. Tokyo, Japan	
D: REVISED FJ00-0E25-24 Y2 7/24/89 C: REVISED J-12311 K0 S1 1/23/89 B: REVISED J-10987 TS MO 1/14/89 A: REVISED 10135 TS MT 5/23/89 O 作成 RELEASED YF TS 11/2/89		WIRE RANGE mm ² (AWG)		INSULATION DIA mm		NAME 12P. ECONOSEAL J-MARK II ⁺ CONNECTOR 12極 エコノシール J マーク II ⁺ CAP HOUSING キャップハウジング	
MATERIAL PBT		FINISH BLACK		GENERAL TOLERANCE 0mm 10 : ±0.2 10mm 30 : ±0.25 30mm 100 : ±0.3 ANGLES : ±5°		SIZE LOC NUMBER B J 174663	
LTR REVISION RECORD DR CHK DATE		DR. K. Oda 5/28/87 APP. M. Nishida 1/14/88		SCALE 2:1 REV. D		SHEET 1 OF 1	

CUSTOMER DRAWING