

4

3

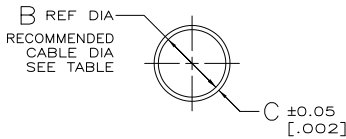
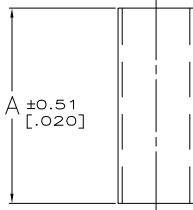
2

1

THIS DRAWING IS UNPUBLISHED. RELEASED FOR PUBLICATION. ALL RIGHTS RESERVED.

LOC	DIST	REVISIONS					
CP	00	P	LR	DESCRIPTION	DATE	BY	APPD
		FS		REVISED PER ECO-11-004835	11MAR11	RK	HMR

- 1 .000100 MIN TIN PER MIL-T-10727 OR TIN-LEAD.
- 2 .000100 MIN TIN PER MIL-T-10727.
- 3 COPPER PER QQ-C-576
- 4 SUPERSEDED
- 5 OBSOLETE PARTS: OBSOLETE CIS STREAMLINING PER D.RENAUD/D.SINISI



FINISH	USED WITH	RECOMMENDED CABLE DIA	C	B	A	PART NUMBER
		4.83-6.10 [.190-.240]	0.38 [.015]	6.15 [.242]	10.16 [.400]	5-745130-6
	7-745129-8	5.84-7.11 [.230-.280]	0.38 [.015]	7.16 [.282]	17.78 [.700]	4-745130-5
	7-745129-9	17.78-19.05 [.700-.750]	0.51 [.020]	19.30 [.760]	17.78 [.700]	4-745130-4
		14.99-16.51 [.590-.650]	0.51 [.020]	16.76 [.660]	17.78 [.700]	4-745130-3
	7-745129-4	11.81-13.46 [.465-.530]	0.51 [.020]	13.59 [.535]	17.78 [.700]	4-745130-2
	7-745129-1	9.65-10.92 [.380-.430]	0.38 [.015]	11.10 [.437]	17.78 [.700]	4-745130-1
	6-745129-9	8.00-9.27 [.315-.365]	0.38 [.015]	9.52 [.375]	17.78 [.700]	4-745130-0
	7-745129-2	7.62-8.89 [.300-.350]	0.38 [.015]	8.99 [.354]	17.78 [.700]	3-745130-9
	7-745129-0	4.83-6.10 [.190-.240]	0.38 [.015]	6.15 [.242]	17.78 [.700]	3-745130-8
		4.83-6.10 [.190-.240]	0.38 [.015]	6.15 [.242]	10.16 [.400]	3-745130-7
	3-745129-2	5.84-7.11 [.230-.280]	0.38 [.015]	7.16 [.282]	17.78 [.700]	1-745130-6
	3-745129-4	17.78-19.05 [.700-.750]	0.51 [.020]	19.30 [.760]	17.78 [.700]	1-745130-4
		14.99-16.51 [.590-.650]	0.51 [.020]	16.76 [.660]	17.78 [.700]	1-745130-3
	2-745129-2	11.81-13.46 [.465-.530]	0.51 [.020]	13.59 [.535]	17.78 [.700]	1-745130-2
	2-745129-6	9.65-10.92 [.380-.430]	0.38 [.015]	11.10 [.437]	17.78 [.700]	1-745130-1
	2-745129-3	8.00-9.27 [.315-.365]	0.38 [.015]	9.52 [.375]	17.78 [.700]	1-745130-0
	1-745129-7	7.62-8.89 [.300-.350]	0.38 [.015]	8.99 [.354]	17.78 [.700]	745130-9
	2-745129-0	4.83-6.10 [.190-.240]	0.38 [.015]	6.15 [.242]	17.78 [.700]	745130-8

THIS DRAWING IS A CONTROLLED DOCUMENT.

DESIGNER: M. WALMSLEY	DATE: 21MAY04	REV: 1
CHECKED: M. WALMSLEY	DATE: 21MAY04	REV: 1
APPROVED: M. WALMSLEY	DATE: 21MAY04	REV: 1
PRODUCT SPEC: ---	APPLICATION SPEC: ---	WEIGHT: ---
SIZE: A2	CAGE CODE: 00779	DRAWING NO: C=745130
CUSTOMER DRAWING		SCALE: 4:1 SHEET: 1 of 1 REV: F5

TE Connectivity  
FERRULE, OUTER, AMPLUMITE HDP-20

745130

A

D

C

B

A

A

A

A

A

A

A

A

A

A

A

A

A

A

A

A

A