

4

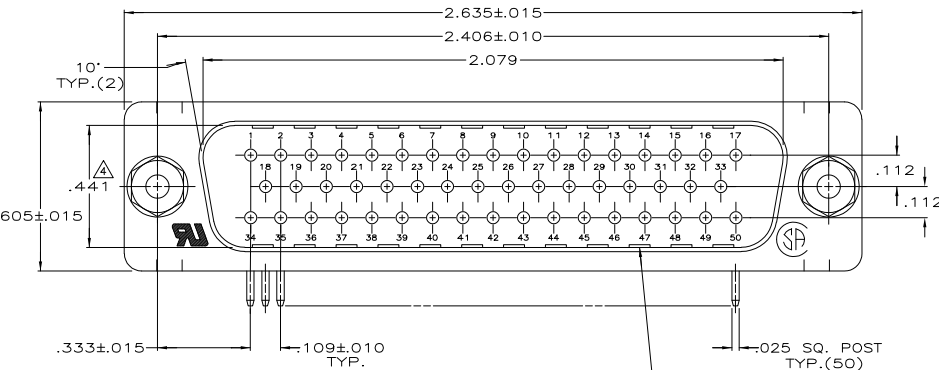
3

2

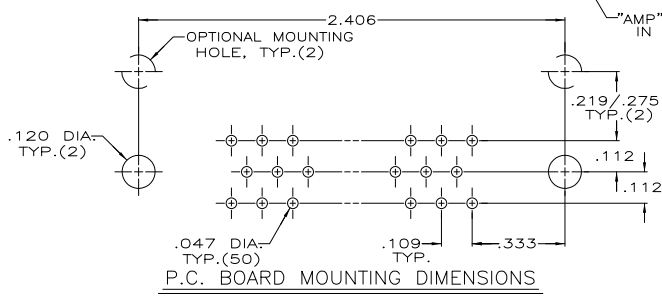
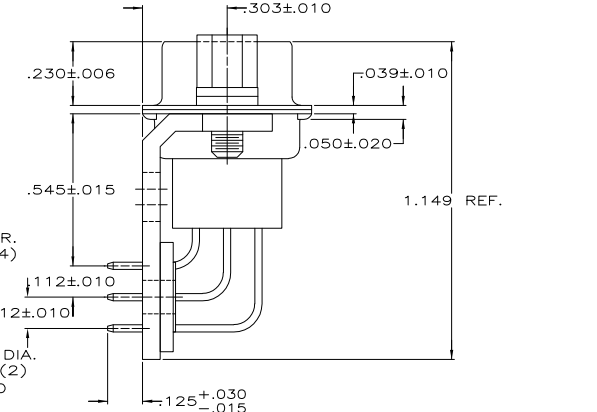
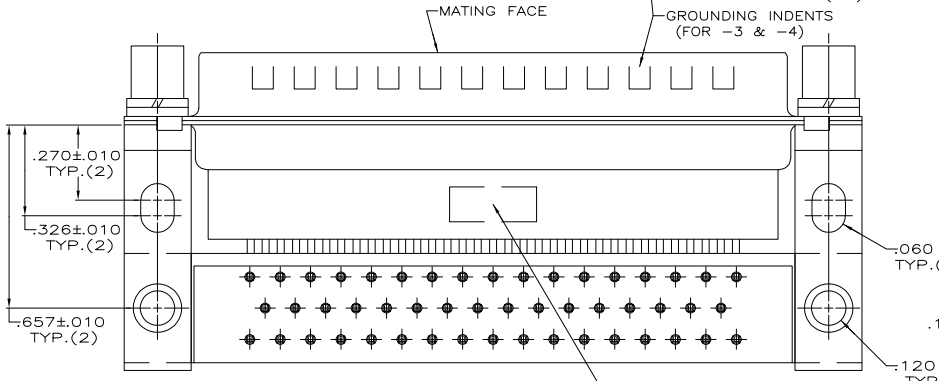
1

THIS DRAWING IS UNPUBLISHED. RELEASED FOR PUBLICATION BY TYCO ELECTRONICS CORPORATION. ALL RIGHTS RESERVED.

LOC		DIBT		REVISIONS			
GP	00	P	LTR	DESCRIPTION	DATE	MIN	APD
		G		REVISED PER ECO-06-028388	12/DEC/06	ZMR	EDB



- CONNECTOR MATES WITH ANY 50 POS. RECEPTACLE IN AMPLIMITE SERIES & COMPLIES WITH AMP SPEC. 108-40,005 WHERE APPLICABLE.
- MOLDED PARTS: FLAME RETARDANT, 94V-0 RATED THERMOPLASTIC, BLACK CONTACTS: BRASS SHELLS AND BRACKETS: STEEL SCREWLOCKS AND WASHERS: STEEL
- SHELLS AND BRACKETS: TIN LEAD OVER COPPER SCREWLOCKS: ZINC PLATED WITH CLEAR CHROMATE COATING
- THIS DIMENSION IS .436 FOR -3 AND -4.
- GOLD PLATED FOR A LENGTH OF .150 MIN FROM MATING END, GOLD FLASH IN MATED AREA, .000100 MIN TIN-LEAD ON OPPOSITE END, BOTH OVER .000050 MIN NICKEL.
- GOLD PLATED FOR LENGTH OF .150 MIN FROM MATING END, .000030 MIN GOLD IN MATED AREA, .000100 MIN TIN-LEAD ON OPPOSITE END, BOTH OVER .000050 MIN NICKEL. -OR- GOLD FLASH OVER PALLADIUM NICKEL PLATED FOR A LENGTH OF .150 MIN FROM MATING END, .000100 MIN GOLD IN MATED AREA, .000100 MIN TIN-LEAD ON OPPOSITE END, BOTH OVER .000050 MIN NICKEL.



		747497-4
OBSOLETE		747497-3
OBSOLETE		747497-2
OBSOLETE		747497-1
	CONTACT FINISH	PART NUMBER

THIS DRAWING IS A CONTROLLED DOCUMENT.

DESIGNED BY: J GERACE	DATE: 7-23-84		Tyco Electronics Corporation	
CHKD BY: J GERACE	DATE: 7-23-84		Harrisburg, PA 17105-3608	
APP'D BY: J GERACE	DATE: 7-24-84	NAME: P. LOWE/GARD	PLUG ASSEMBLY, SIZE 5, 50 POSITION, RIGHT ANGLE, 545 SERIES, .025 SQ POSTS, AMPLIMITE HDP	
MATERIAL:	FINISH:	APPLICATION SPEC: -	SIZE: A2	ONE CODE: 00779
CUSTOMER DRAWING		WEIGHT: -	REV: C=747497	RESTRICTED TO: -
			SCALE: 4:1	SHEET: 1 of 1

AMP 1471-9 REV 31MM2000

747497