

4

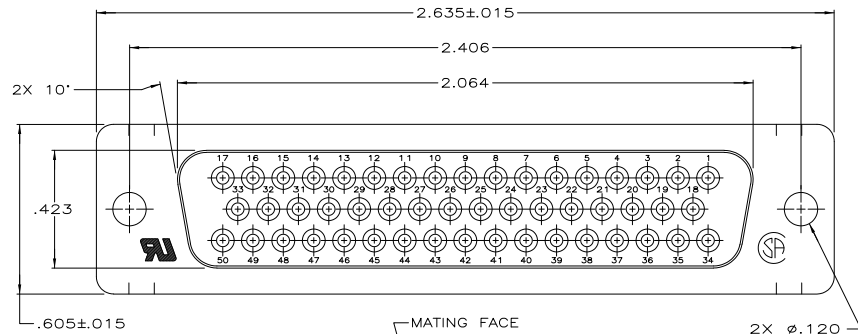
3

2

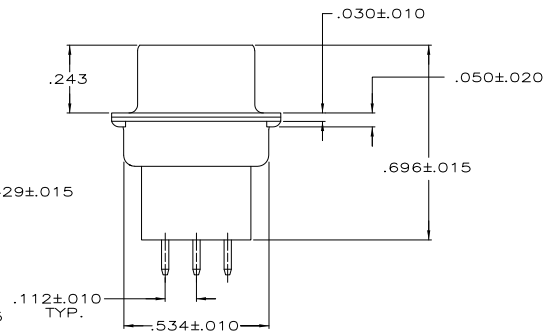
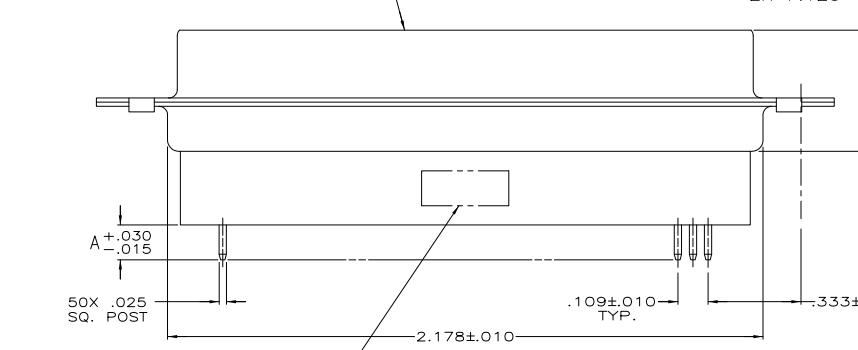
1

THIS DRAWING IS UNPUBLISHED. RELEASED FOR PUBLICATION
 © COPYRIGHT BY TYCO ELECTRONICS CORPORATION. ALL RIGHTS RESERVED.

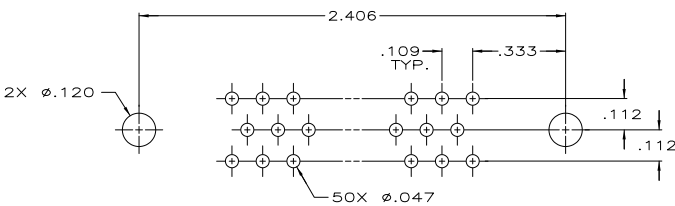
LOC		DIBT		REVISIONS			
GP	00	P	LTR	DESCRIPTION	DATE	OWN	APPD
		M		REVISED PER ECO-10-000073	18/FEB/2010	CJV	SB



1. NOTE DELETED.
- ⚠ MOLDED PARTS: FLAME RETARDANT 94V-0 RATED THERMOPLASTIC
SHELLS: STEEL
CONTACTS: BRONZE.
 - ⚠ GOLD FLASH ON MATING END, .000100 MIN TIN-LEAD ON SOLDER END, ALL OVER .000050 MIN NICKEL.
 - ⚠ .000030 MIN GOLD ON MATING END, .000100 MIN TIN-LEAD ON OPPOSITE END, ALL OVER .000050 MIN NICKEL.
-OR-
GOLD FLASH OVER PALLADIUM-NICKEL .000030 MIN TOTAL ON MATING END, .000100 MIN TIN-LEAD ON OPPOSITE END, ALL OVER .000050 MIN NICKEL.
 - ⚠ .000200 MIN TIN OVER .000100 MIN COPPER.



"AMP", PART NO. & DATE CODE, STAMPED
 IN AREA INDICATED, ON FAR SIDE



P.C. BOARD MOUNTING DIMENSIONS

SUPSD BY 745191-7	⚠	.188	745191-8
	⚠	.188	745191-7
	⚠	.651	745191-6
SUPSD BY 205740-5	⚠	.651	745191-5
	⚠	.427	745191-4
	⚠	.427	745191-3
SUPSD BY 745191-1	⚠	.125	745191-2
	⚠	.125	745191-1
		GOLD FINISH	DIMENSION A
			PART NUMBER

THIS DRAWING IS A CONTROLLED DOCUMENT.		DN	10-24-83	Tyco Electronics Corporation	
DIMENSIONS: INCHES		J GERACE <td>10-24-83 <td colspan="2">Harrisburg, PA 17105-3608</td> </td>	10-24-83 <td colspan="2">Harrisburg, PA 17105-3608</td>	Harrisburg, PA 17105-3608	
TOLERANCES UNLESS OTHERWISE SPECIFIED:		J GERACE <td>1-4-84 <td colspan="2">NAME</td> </td>	1-4-84 <td colspan="2">NAME</td>	NAME	
0 PLC	± .005	B. TAYLOR <td> <td colspan="2">RECEPTACLE ASSEMBLY, SIZE 5,</td> </td>	<td colspan="2">RECEPTACLE ASSEMBLY, SIZE 5,</td>	RECEPTACLE ASSEMBLY, SIZE 5,	
1 PLC	± .005	<td> <td colspan="2">50 POS., VERTICAL,</td> </td>	<td colspan="2">50 POS., VERTICAL,</td>	50 POS., VERTICAL,	
2 PLC	± .005	<td> <td colspan="2">TM</td> </td>	<td colspan="2">TM</td>	TM	
3 PLC	± .005	<td> <td colspan="2">APPLICATION SPEC: 108-40025</td> </td>	<td colspan="2">APPLICATION SPEC: 108-40025</td>	APPLICATION SPEC: 108-40025	
4 PLC	± .005	<td> <td colspan="2">APPLICATION SPEC: 114-40013</td> </td>	<td colspan="2">APPLICATION SPEC: 114-40013</td>	APPLICATION SPEC: 114-40013	
5 PLC	± .005	<td> <td colspan="2">SIZE CASE CODE DRAWING NO: A2 00779 C=745191</td> </td>	<td colspan="2">SIZE CASE CODE DRAWING NO: A2 00779 C=745191</td>	SIZE CASE CODE DRAWING NO: A2 00779 C=745191	
6 PLC	± .005	<td> <td colspan="2">RESTRICTED TO: -</td> </td>	<td colspan="2">RESTRICTED TO: -</td>	RESTRICTED TO: -	
7 PLC	± .005	<td> <td colspan="2">MATERIAL FINISH: -</td> </td>	<td colspan="2">MATERIAL FINISH: -</td>	MATERIAL FINISH: -	
8 PLC	± .005	<td> <td colspan="2">HEIGHT: -</td> </td>	<td colspan="2">HEIGHT: -</td>	HEIGHT: -	
9 PLC	± .005	<td> <td colspan="2">CUSTOMER DRAWING</td> </td>	<td colspan="2">CUSTOMER DRAWING</td>	CUSTOMER DRAWING	
10 PLC	± .005	<td> <td colspan="2">SCALE: NTS SHEET 1 of 1 REV: M</td> </td>	<td colspan="2">SCALE: NTS SHEET 1 of 1 REV: M</td>	SCALE: NTS SHEET 1 of 1 REV: M	
11 PLC	± .005	<td> <td colspan="2">CONTACTS: SEE TABLE</td> </td>	<td colspan="2">CONTACTS: SEE TABLE</td>	CONTACTS: SEE TABLE	